

737 Veropaque G3

Blockout



Flame Retardant



Roller Blinds



Panel Glides

Contemporary and soft to touch, with matching semi transparent fabric

Features

- Constructed from a fine 2x1 weave, making it delicate to touch
- Colour coated backing for a uniform look from the inside and outside
- Designed for maximum room darkening and total privacy
- Flame retardant, Greenguard Gold, Oeko-Tex certified fabric suitable for commercial and residential
- Contemporary palette of 9 colours, and available in matching semi transparent fabric
- Suitable for Roller Blinds and Panel Glides

Care Instructions

Wipe clean with warm soapy water and a damp cloth.

For more information visit verosol.com.au or call **1800 721 404**



737 Veropaque G3

Blockout

Fabric Density	Blockout		Opacity	AS2663-1999
Composition	100% Polyester with Acrylic Foam Coating PVC Free		Air Quality	ASTM-D5116
Weight	350gsm ± 10%		Total Volatile Organic Compound emission rate 0.003mg/m ² /hr	
Thickness	0.38mm ± 10%			
Width	3000mm			
Colour Fastness	>5 [Blue Wool Scale], Fade Resistent			
Flame Retardancy [AS/NZS 1530.3-1999]	Ignitability Index	14 Range [0-20]	Compliant to BCA C1.10. Suitable for use in class 2 to 9 buildings.	
	Spread of flame Index	0 Range [0-10]		
	Heat evolved Index	1 Range [0-10]		
	Smoke developed Index	7 Range [0-10]		
Certification	Greenguard Gold	Oeko-Tex 100 Class IV		
Suitable Products	Roller Blinds	Panel Glides		

Blockout Fabric Range	1000	1800	2000	4000	6000	6500	7000	8000	8500
Solar transmittance	0%	0%	0%	0%	0%	0%	0%	0%	0%
Solar reflectance outside	85%	62%	72%	46%	60%	54%	15%	11%	5%
Solar absorptance	15%	38%	28%	54%	40%	46%	85%	89%	95%
Luminous transmittance [VLT]	0%	0%	0%	0%	0%	0%	0%	0%	0%
UV transmittance	0%	0%	0%	0%	0%	0%	0%	0%	0%
Openness factor	0%	0%	0%	0%	0%	0%	0%	0%	0%

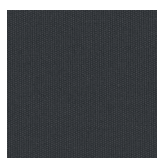
Glazing Type - Single 4mm Clear Glass

G-value / SHGC	27%	37%	37%	46%	38%	42%	63%	66%	68%
----------------	-----	-----	-----	-----	-----	-----	-----	-----	-----

Glazing Type - High Performance Glazing

G-value / SHGC	24%	26%	25%	27%	26%	26%	30%	30%	30%
----------------	-----	-----	-----	-----	-----	-----	-----	-----	-----

Colour Range



8500 Charcoal Black