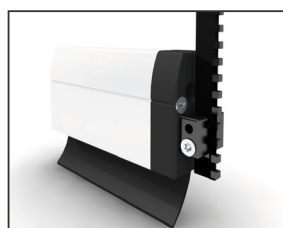
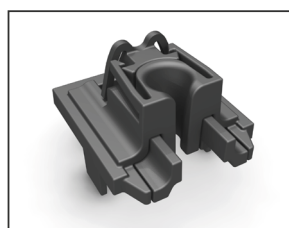
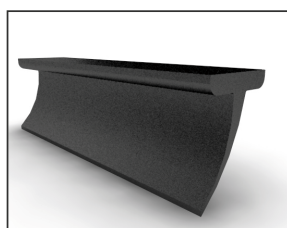
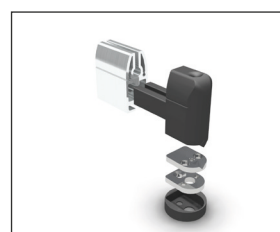
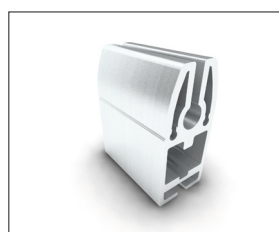
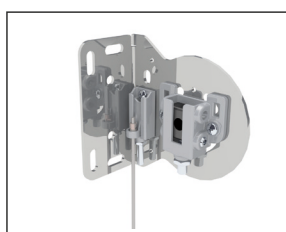
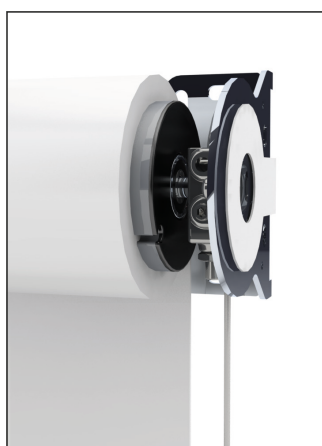


EXTERNAL BLINDS

INSTALLATION GUIDE

Verosol



EXTERNAL BLIND INSTALLATION GUIDE

INTRODUCTION

This Installation manual has been produced by Verosol to supply the necessary information for safe and correct installation of this system.

INSTALLERS RESPONSIBILITY

Before installing, please read & ensure you understand the safety information and installation instructions as defined in this installation manual. If you do not fully understand these instructions, contact Verosol for clarification before installing. The Installer is responsible to ensure that all installation personnel have been adequately trained on the safe & correct installation and operation.

The Installer is responsible to ensure that a Job Safety Analysis or Safe Work Method Statement is completed prior to installation to identify hazards, to determine appropriate risk control measures and to implement the control measures.

The Installer is responsible to ensure that supporting structures are sound and can adequately support the load.

The Installer is responsible to ensure that the devices used to anchor the product to the supporting structure are suitable for the application.

SAFETY INFORMATION

Ensure Job Safety Analysis/Safe Work Method Statement is completed and actions to reduce risks are implemented.

Ensure that electrical works are done only by a LICENSED ELECTRICIAN.

DO NOT modify any of the components of this system.

PERSONNEL REQUIREMENTS

Only suitably trained/qualified personnel should undertake installation.

DISCLAIMER

Verosol has used reasonable care in preparing the information included in this document, but makes no representations or warranties as to the completeness or accuracy of the information. Information is supplied upon the condition that the persons receiving the information will make their own determination as to its suitability for their purposes prior to use. Verosol assumes no liability whatsoever for any damages incurred by you resulting from errors in or omissions from the information included herein. Verosol has the right to make changes without further notice to any products to improve reliability, function or design.

COPYRIGHT

COPYRIGHT Verosol Australia 2017

All rights reserved. No part of this document may be reproduced or utilised in any means, by any means, electronic or mechanical

including photocopying, recordings, or by any information storage or retrieval system, without the express permission from Verosol.

SECTION 1 (GUIDE WIRES)

4

No Head Box



Head Box



SECTION 2 (VEROLOCK)

18

No Head Box



Head Box



SECTION 1

CONTENTS

DESCRIPTION	PAGE
SECTION 1 (GUIDE WIRES)	4
TOOLS REQUIRED	4
BEFORE YOU START: PREPARE INSTALLATION SPACE	6
BRACKET INSTALLATION	7
HEAD BOX INSTALLATION	8
BLIND INSTALLATION	9 - 14
TRUBLE SHOOTING	15
INSTALLED PRODUCT	16

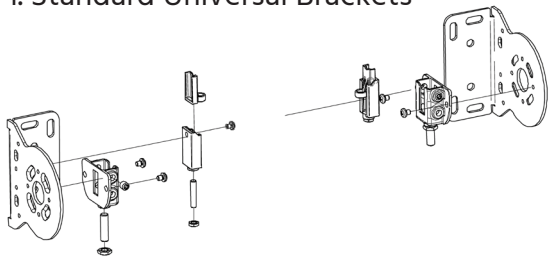
TOOLS REQUIRED		
GUIDE WIRES	<ul style="list-style-type: none">• 8mm drill bits - Cobalt recommended• Pliers - crimping tool• Cable cutting tool• Drill• #2 Philips head driver bit• 3mm drill bits - Cobalt recommended• Philips head screw driver• 3mm, 4mm ball top Allen keys• Measuring tape• Spirit level• Marking Pen	<p>ADDITIONAL</p> <p>Assembly of the External blind wire guide system requires non supplied fixings, please ensure the appropriate fixings are used to suit particular applications.</p>

SECTION 1

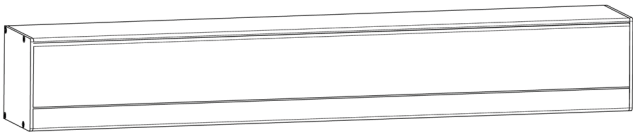
GUIDE WIRES EXTERNAL BLINDS OPTIONS

(Choose one only)

1. Standard Universal Brackets

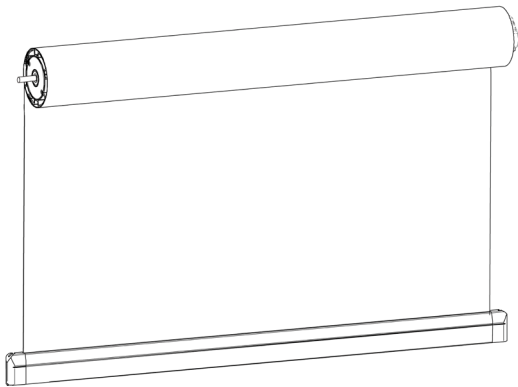


2. Head Box



EXTERNAL BLIND SYSTEM: BLIND

STANDARD BLIND



GUIDE WIRES BASE FITTING HARDWARE OPTIONS

(Choose one type only)

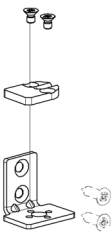
i. Masonry Mount



ii. Deck Mount



iii. Face or Side Mount



BEFORE YOU START: PREPARE INSTALLATION SPACE

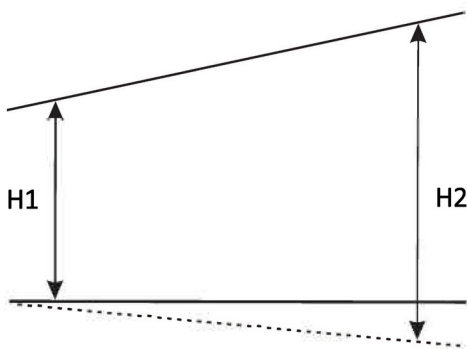
1. Check for obstructions

Check for any obstructions that may interfere in installation.

2. Check dimensions

Check vertical and horizontal installation dimensions

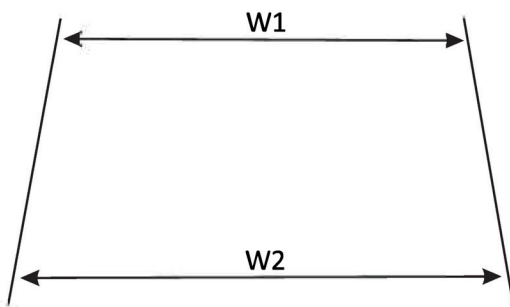
VERTICAL DIMENSIONS



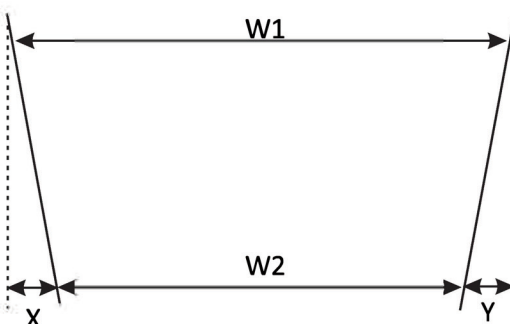
2.i Check if the top of the installation space is levelled.

NOTE: If $H1 \neq H2$, corrective actions may need to be considered prior to installation

HORIZONTAL DIMENSIONS



If $W2 > W1$, blind width = $W1$

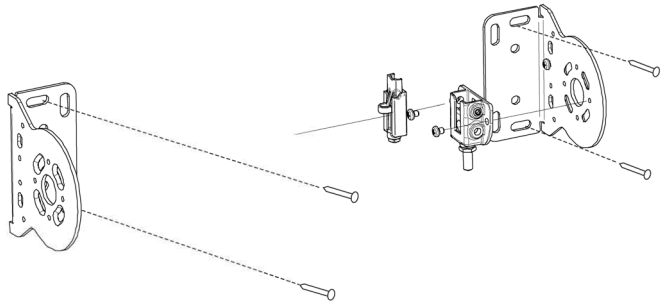


If $W2 < W1$, blind width = $W2$

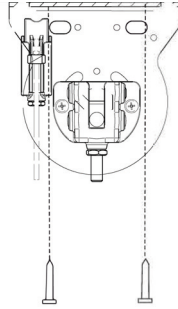
OPTION 1. BRACKET INSTALLATION

1. Install brackets to wall / ceiling

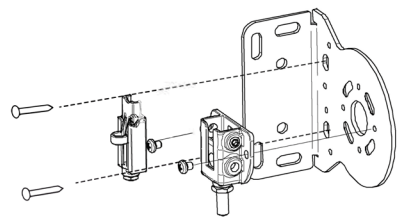
FACE FIX



TOP FIX



SIDE FIX



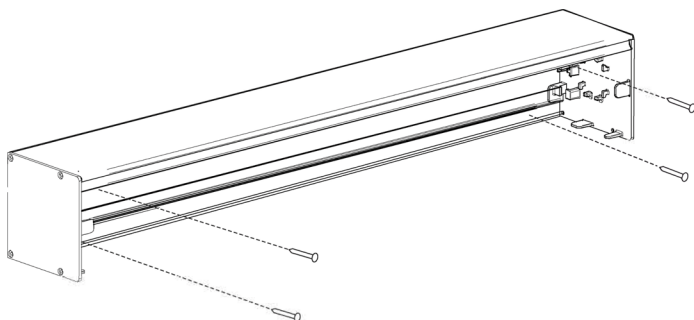
Note: Use appropriate fixings to suit application

- Ensure brackets are aligned and levelled.
- Measure brackets from outside to outside, confirm the measurement is correct.

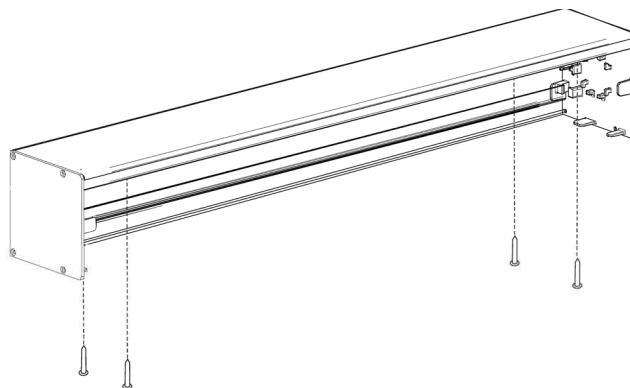
OPTION 2. HEAD BOX INSTALLATION

1. Install Head Box to wall / ceiling

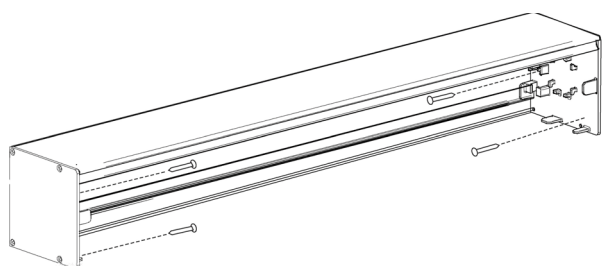
FACE FIX



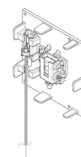
TOP FIX



SIDE FIX



Example Image

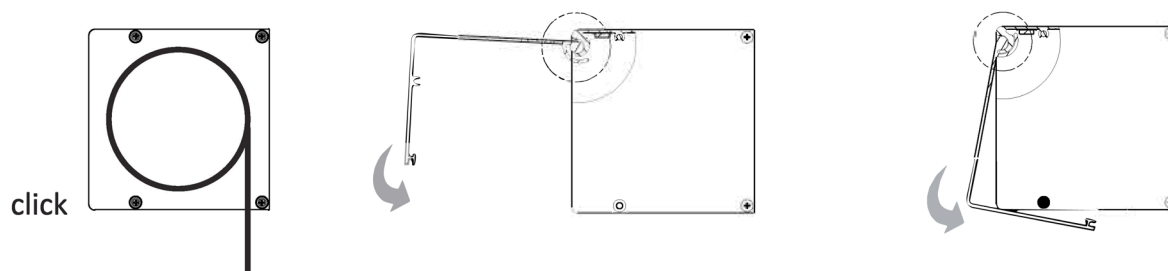


Note: Use appropriate fixings to suit application

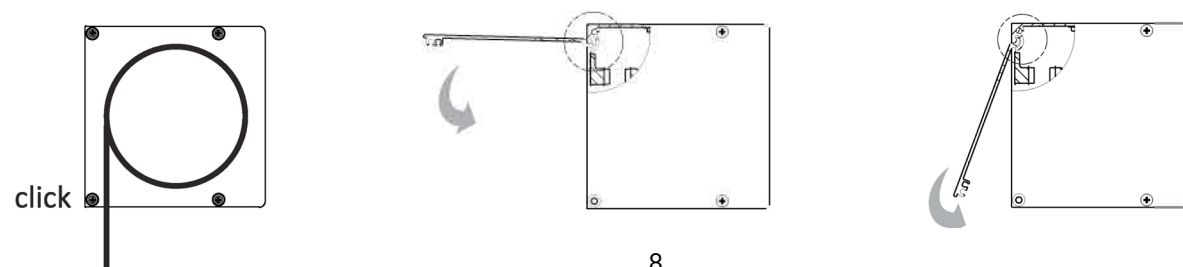
- Ensure Head Box is aligned and levelled.

HEAD BOX CONFIGURATIONS

FRONT COVER FOR BACK ROLL INSTALLATION

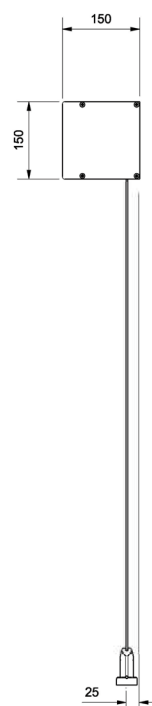
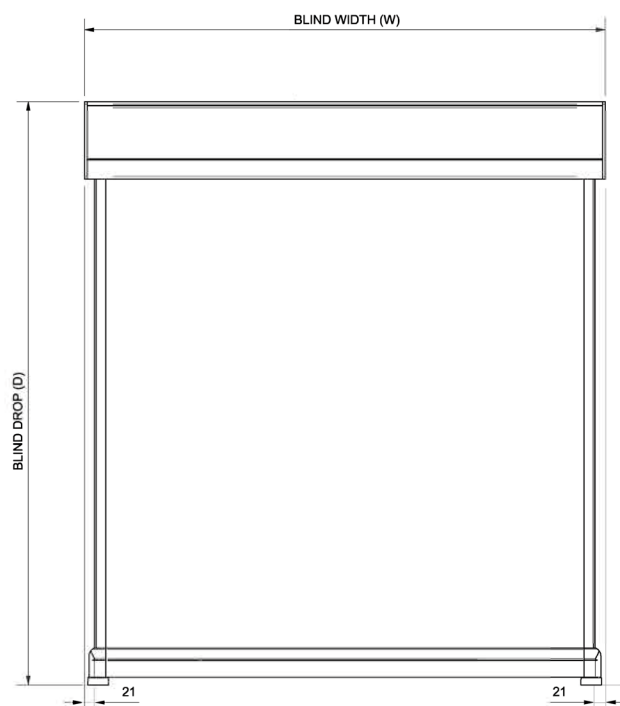


BACK COVER TO THE FRONT FOR FRONT ROLL INSTALLATION



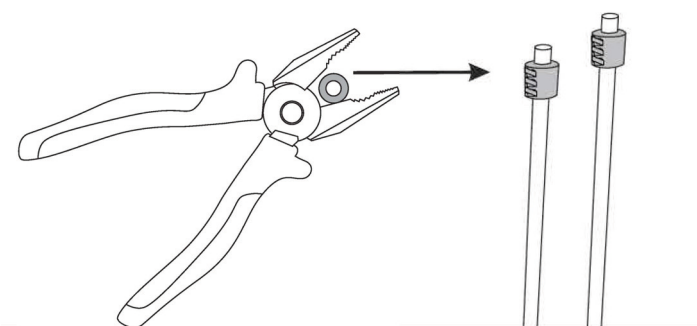
BLIND INSTALLATION

2. Mark guide wire base fixing locations



WIRE CENTRES	
HEAD BOX	21mm
NO HEAD BOX (WITH BRACKET COVERS)	21mm
NO HEAD BOX (WITHOUT BRACKET COVERS)	19mm

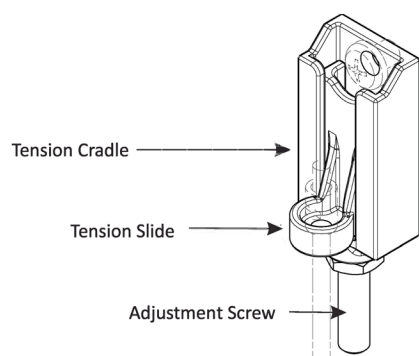
2. i Prepare guide wires



Note: Cut wires at the blind drop, unless the wires are required to be longer than the blind drop.

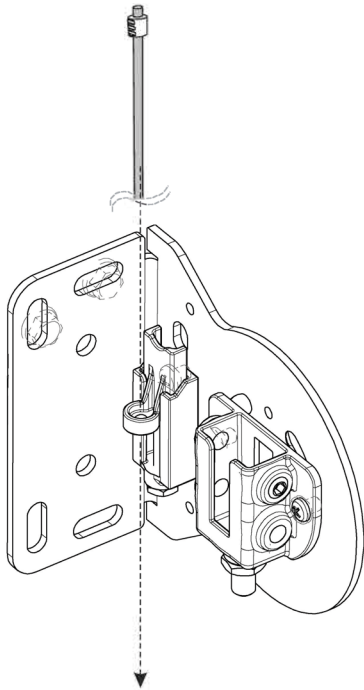
- Triple crimp a supplied copper termination swage on **ONE** end of each wire.

3. Install guide wires into the tension cradles

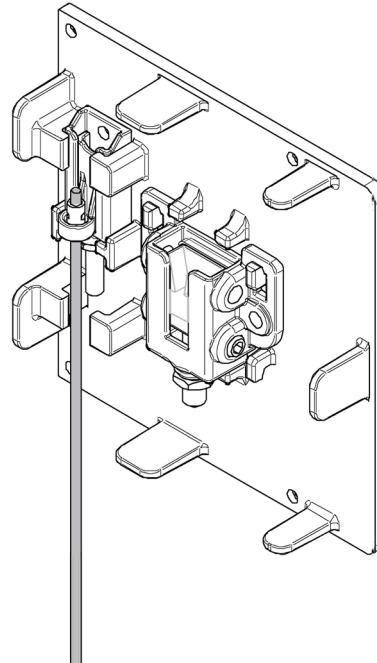


Note: Prior to threading the guide wires, ensure the tension slides are set at the bottom position. This is achieved by winding out the adjustment screw on the base of the tension cradle.

- Starting at the bottom position enables the maximum adjustments.

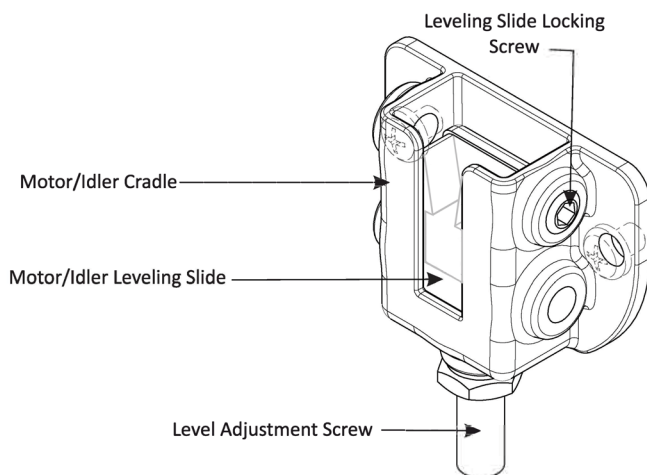


Standard Universal Bracket option shown



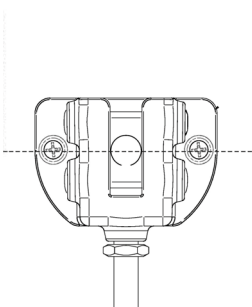
Head Box option shown

4. Insert blind into cradle



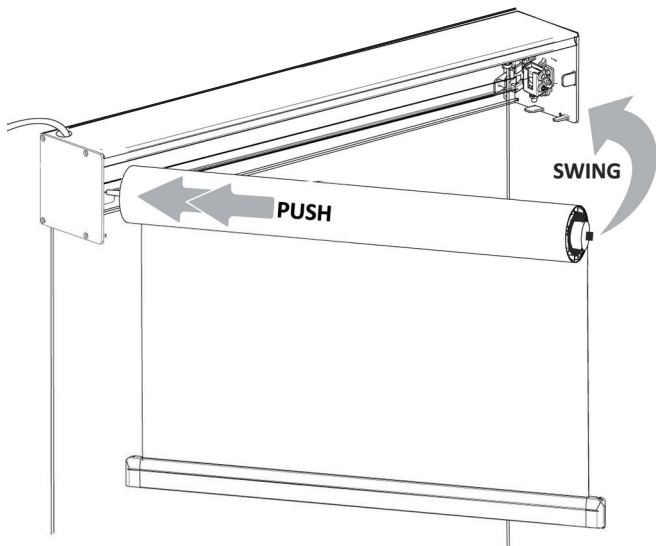
Note: Prior to installing the blind ensure the levelling slides are set in the centre position, this is achieved by winding the adjustment screw on the base of the cradle in or out.

Note: Starting at the centre position enables maximum levelling adjustments.



BLIND INSTALLATION

4. i

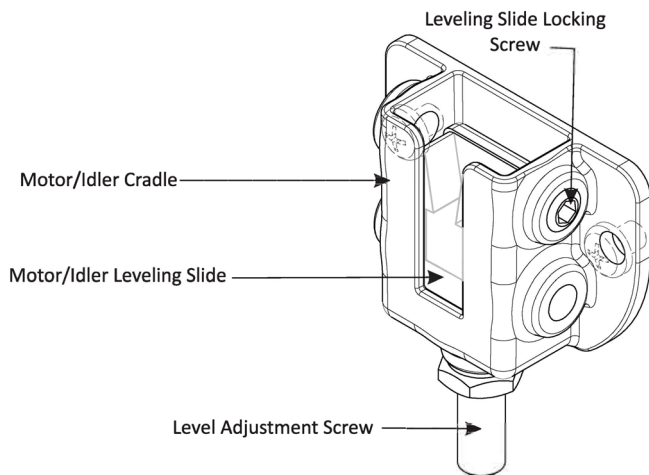


Note: Insert the idle end first.

1. Insert the idlers spring loaded pin into the Idler slide
2. Push towards idler's to depress the spring
3. Swing the motor end in aligning motor to motor slide
4. Release pressure to locate motor in slide
5. i With the Head Box option, drill a 8mm hole in the head box where required and pull the cable through then connect power
5. ii With the standard universal bracket option, pull the cable through and connect power
6. Ensure motor is fully inserted
7. Tighten motor slide lock screw

NOTE: HEAD BOX OPTION SHOWN, USE THE SAME PROCEDURE FOR STANDARD UNIVERSAL BRACKET OPTION

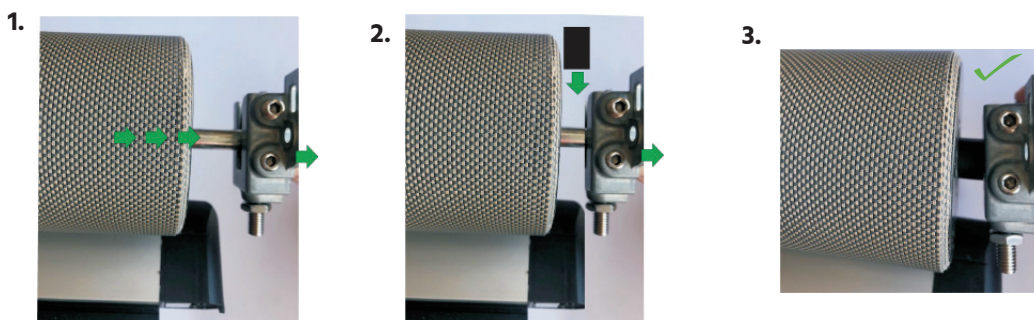
5. Levelling blind in brackets



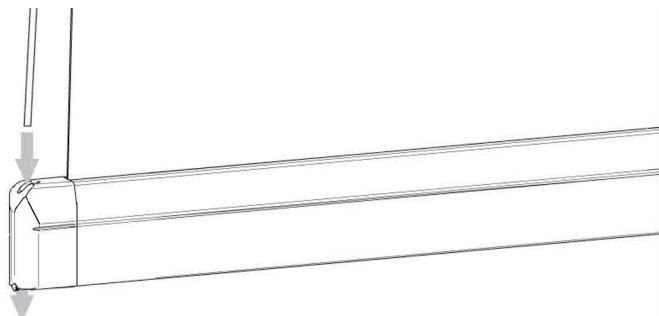
Note:

1. After installing the blind check it for level with a spirit level.
2. If adjustment is needed, adjust either or both sides with Level Adjusting Screw.
3. Once levelled, tighten Levelling Slide Locking Screws.

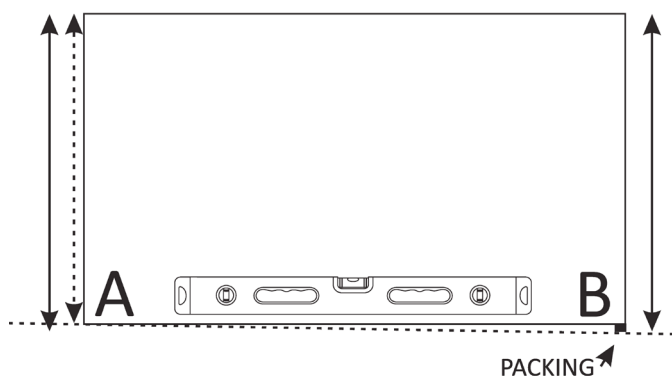
*Idler Locking Grommet



6. Insert the wires down through the end caps slots



7. Guide wires mounting options



Install the required guide wire base fixing option in to position as marked in step 2, page 8.

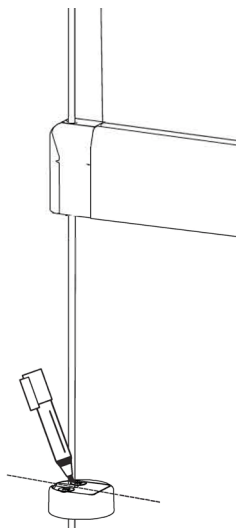
NOTE: Standard Magnetised System

For maximised function of the magnetic hold end caps, it is essential to horizontally align the base fittings with each other, some packing may be required.

Install the first base mounting on the highest ground position, i.e position A. Pack position B to be level with position A.

Note: For non magnetised installation this step is not critical.

8.



8. i Cutting final cable length and install bottom termination swages

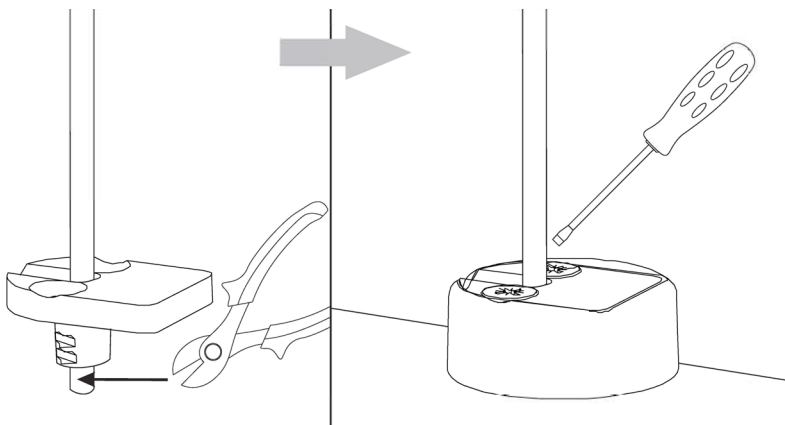
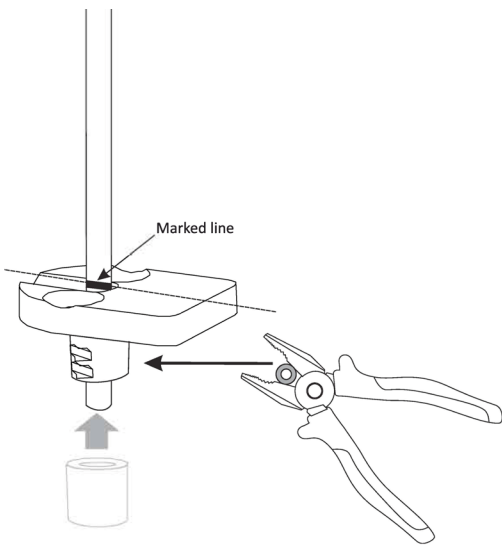
8. ii Use the marker to mark the cable length at the top of the selected mounting option

BLIND INSTALLATION

2. Remove the top plate from the fixing point and slide it onto the cable.

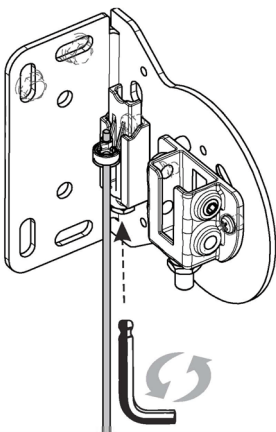
3. Slide a copper termination swage onto the cable and triple crimp. Ensure the top of the plate aligns to your marked cable.

4. Cut off excess cable, re-attach the plate to the fixing point.

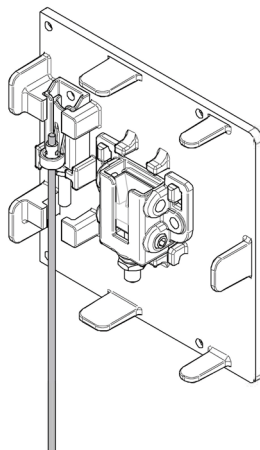


9. Tension cables

Note: Tighten cable tension screws with a 3mm Ball end Allen Key, when required tension is achieved tighten lock nut.

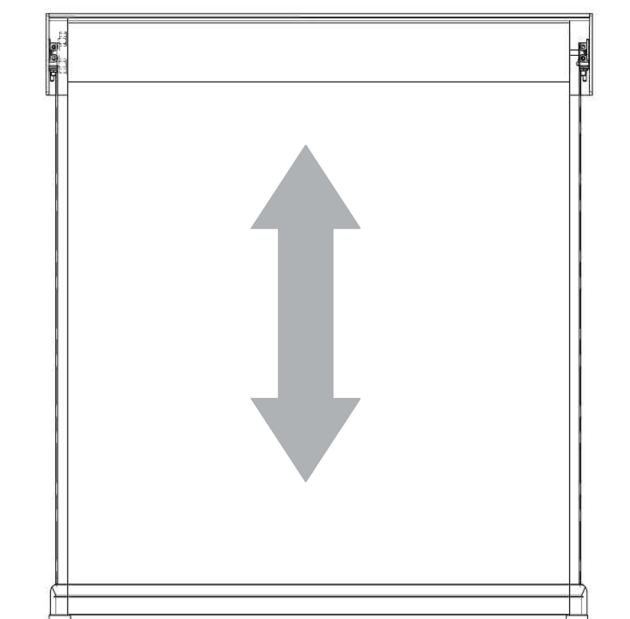


1. Bracket

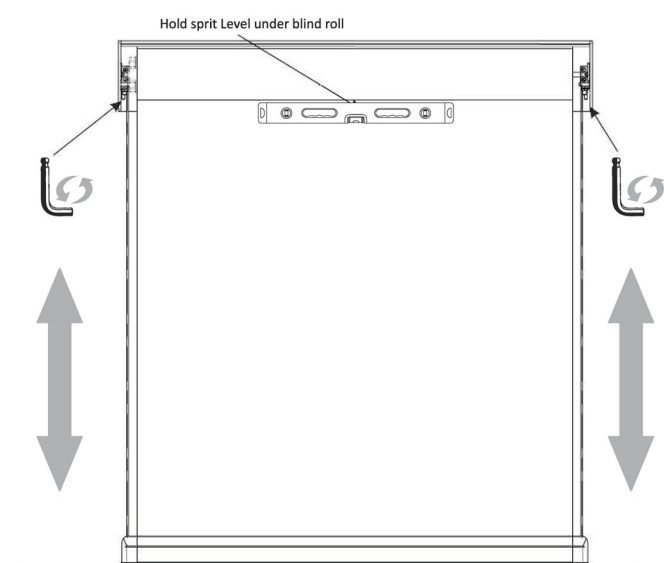


2. Head Box

10. Test the blind



Note: Ensure power is connected. Program motor to Somfy RTS remote. Run the blind down to expose the tube and centre the blind. Set the top and bottom limits and run the blind up and down.



Note:

MAGNETIC SYSTEM FINE LIMIT ADJUSTMENT

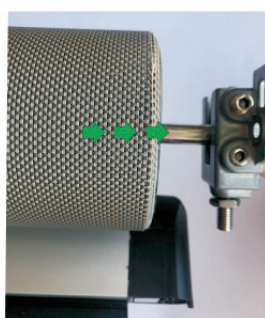
1. To fine tune magnetic contact with base plates, adjust the blind up or down until maximum contact is achieved.
2. Once levelled and at the desired height tighten Levelling Slide Locking Screws.
3. Insert idler locking Grommet over the idler shaft once the blind is installed in the brackets*

After final adjustments, install Head Box cover for the Head Box Option.

*Idler Locking Grommet



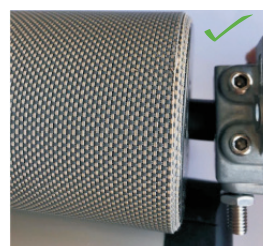
1.



2.



3.



TROUBLE SHOOTING: GUIDE WIRES		
PROBLEM	CAUSE	SOLUTION
Ripples along sides of fabrics	Blind rolled up for an extended period of time	This occurrence is inherent to roller systems and is more prevalent in some fabrics. Leave blind down for 1-4 hours; most ripples should disappear.
	Not enough weight in base bar	Add ballast.
	Installation is not square	Check blind roll is installed level.
	Fabric permanently damaged due to inadequate handling	Replace fabric and ensure it is handled with care.
Blind does not fully open / jams	Position of wire guides at base is incorrect.	Check if guide wire fixing at floor / base are positioned in line with the top tensioner. If fixing is too far inwards of the tensioner then reposition.
	Incorrect motor bottom limit used	Refer to motor instructions to reset bottom limit.
Uneven base bar	Blind roll is not level, thus weight bar appears uneven .	Ensure blind is installed level.
	Blind has been operated in excessive wind conditions	Check blind roll when the blind is fully raised. If ripples are evident on roll, open blind fully (without the presence of wind) to allow the blind to track down evenly. Raise and lower blind a number of times to check operation.
	Fabric is not installed straight	Ensure fabric is rolled straight onto tube and base bar.
Magnets not locking properly	Base fittings are not levelled	Ensure fabric is rolled straight onto tube and base bar.
	Uneven base bar	Pack base fittings to rectify. Ensure blind is installed level.
	Obstruction preventing base bar lowering	Remove obstruction to allow base bar to reach its lowest point.

INSTALLED PRODUCT

GUIDE WIRES

1. NO HEAD BOX + GUIDE WIRES



2. HEAD BOX + GUIDE WIRES



SECTION 2

CONTENTS

DESCRIPTION	PAGE
SECTION 2 (VEROLOCK)	18
TOOL REQUIRED	18
BEFORE YOU START: PREPARE INSTALLATION SPACE	19
BRACKET INSTALLATION	20
HEAD BOX INSTALLATION	21
BLIND INSTALLATION	22
FACE FIT / SIDE CHANNEL OPTION INSTALLATION	24
REVEAL FIT L CHANNEL OPTION INSTALLATION	25
REVEAL / RECESS FIT U CHANNEL OPTION INSTALLATION	26
TROUBLE SHOOTING	28
INSTALLED PRODUCT	29

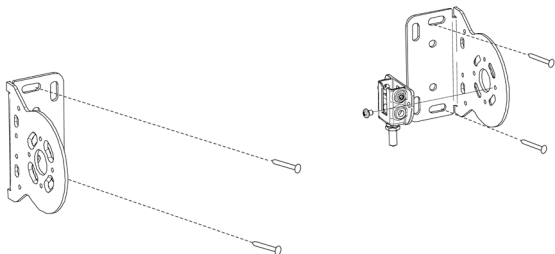
TOOLS REQUIRED		
VEROLOCK	<ul style="list-style-type: none">• 10mm drill bits - Cobalt recommended• Drill• #2 Philips head driver bit• 3mm drill bits - Cobalt recommended• Philips head screw driver• 3mm, 4mm ball top Allen keys - Snap On brand recommended• Measuring tape• Spirit level• Marking Pen• WD-40 Specialist Anti Friction Dry PTFE Lubricant Spray Can	<p>ADDITIONAL</p> <p>Assembly of the External blind wire guide system requires non supplied fixings, please ensure the appropriate fixings are used to suit particular applications.</p>

SECTION 2

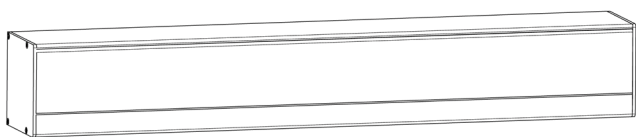
EXTERNAL BLIND SYSTEM: VEROLOCK

OPTIONS (Choose one only)

1. Standard Universal Brackets

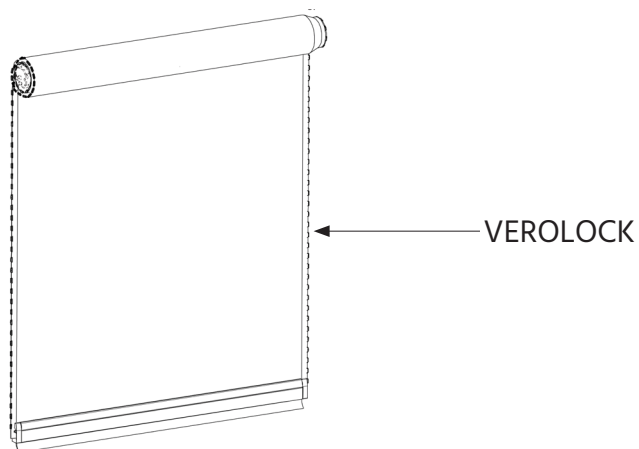


2. Head Box



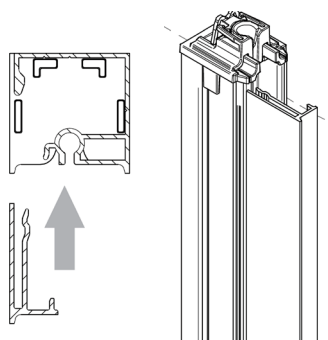
EXTERNAL BLIND SYSTEM: BLIND

BLIND WITH VEROLOCK FITTED



VEROLOCK CHANNEL OPTIONS

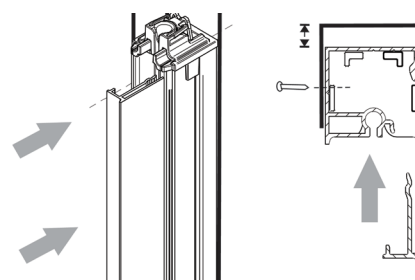
i. Side Channel



ii. U Channel



iii. L Channel



BEFORE YOU START: PREPARE INSTALLATION SPACE

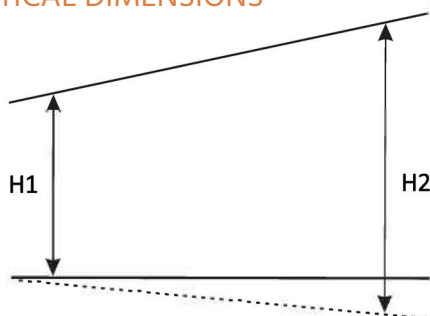
1. Check for obstructions

Check for any obstructions that may interfere in installation.

2. Check dimensions

Check vertical, horizontal and diagonal dimension installation dimensions

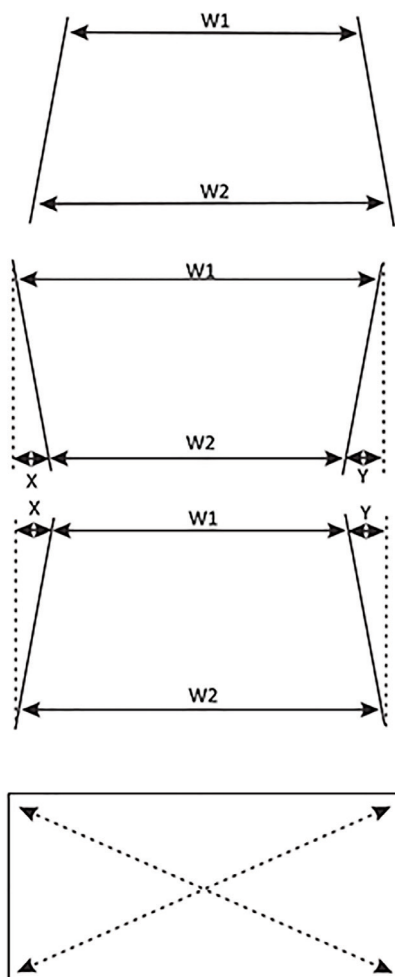
VERTICAL DIMENSIONS



2.i Check if the top of the installation space is levelled.

NOTE: If $H1 \neq H2$, corrective actions may need to be considered prior to installation

HORIZONTAL DIMENSIONS



If $W2 > W1$, $W1$ = Blind Width

If $W2 < W1$, by a value of:

0-10mm $W2$ = Blind Width.

If $W2$ is 10mm or more narrower, consider corrective action to square installation space. If X or Y are $> 5\text{mm}$ packing is required. Pack out the sides so they are levelled.

If $W2 > W1$, by a value of:

0-10mm, $W1$ = Blind Width

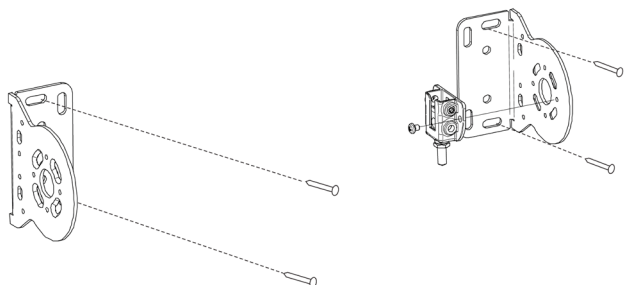
If $W1$ is 10mm or more narrower, consider corrective action to square installation space. If X or Y are $> 5\text{mm}$ packing is required. Pack out the sides so they are levelled.

A square and level installation space will provide greater flexibility with the rest of the installation.

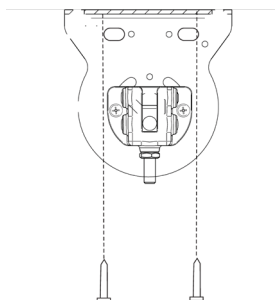
OPTION 1. BRACKET INSTALLATION

1. Install brackets to wall / ceiling

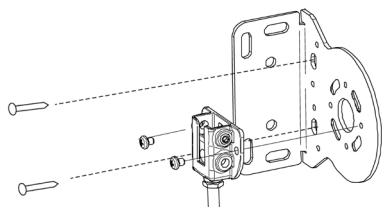
FACE FIX



TOP FIX



SIDE FIX



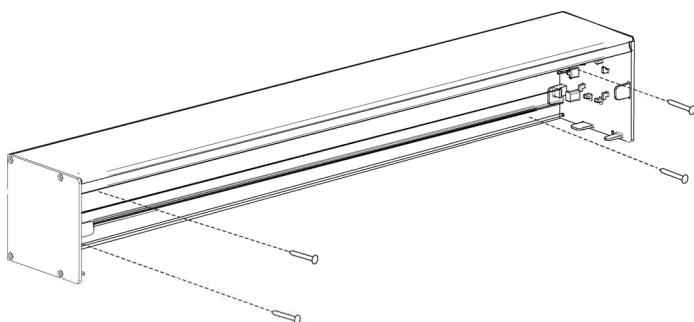
Note: Use appropriate fixings to suit application

- Ensure brackets are aligned and levelled.
- Measure brackets from outside to outside, confirm the measurement is correct.

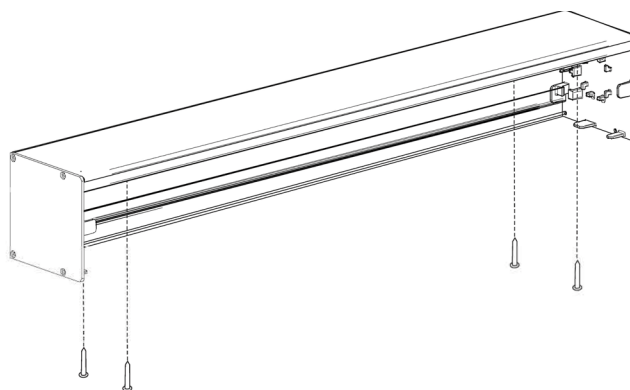
OPTION 2. HEAD BOX INSTALLATION

1. Install Head Box to wall / ceiling

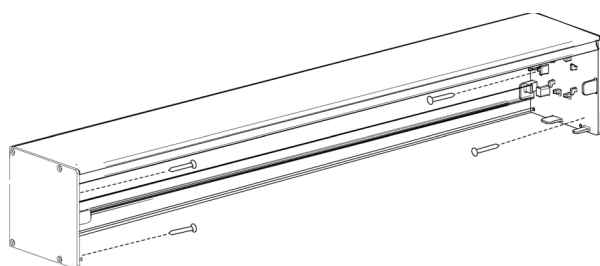
FACE FIX



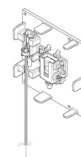
TOP FIX



SIDE FIX



Example Image

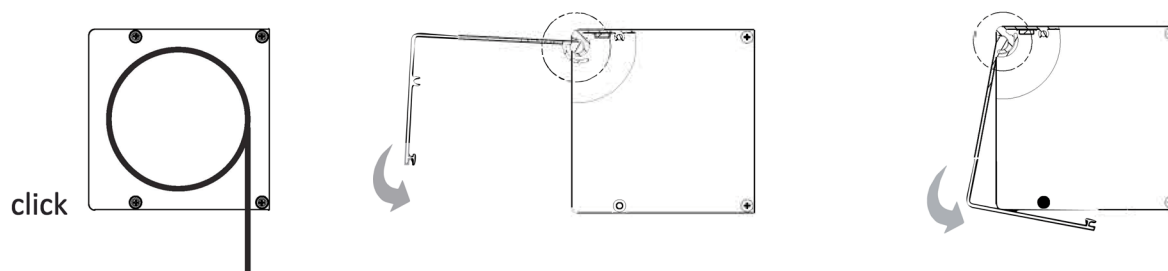


Note: Use appropriate fixings to suit application

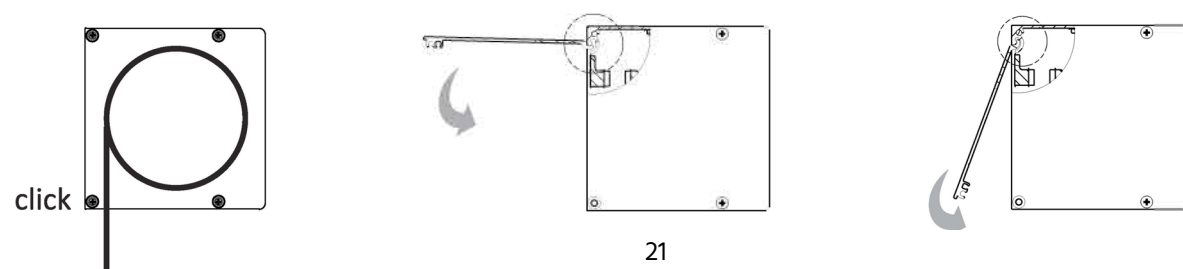
- Ensure Head Box is aligned and levelled.

HEAD BOX CONFIGURATIONS

FRONT COVER FOR BACK ROLL INSTALLATION

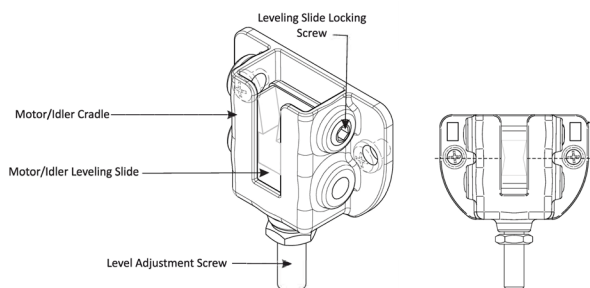


BACK COVER TO THE FRONT FOR FRONT ROLL INSTALLATION



BLIND INSTALLATION

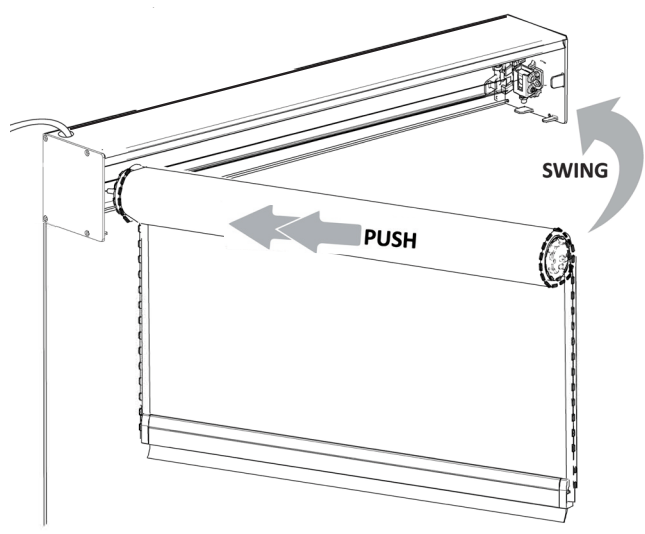
2. Insert blind into cradle



Note: Prior to installing the blind ensure the levelling slides are set in the centre position, this is achieved by winding the adjustment screw on the base of the cradle in or out.

Note: Starting at the centre position enables maximum levelling adjustments.

2. i



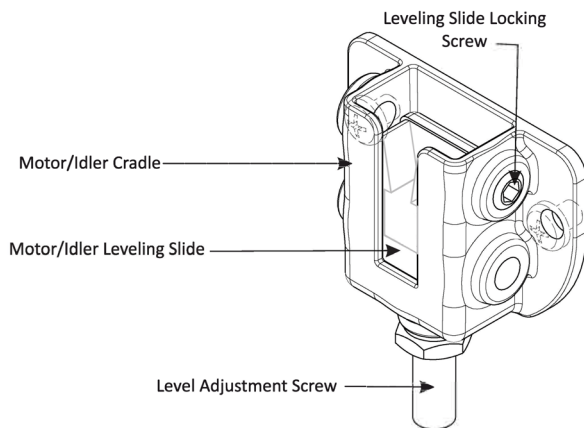
Note: Insert the Idle end first.

1. Insert the idler's spring loaded pin into the Idler slide
2. Push towards idler to depress the spring
3. Swing the motor end in aligning motor to motor slide
4. Release pressure to locate motor in slide
5. i With the Head Box option, drill a 8mm hole in the head box where required and pull the cable through then connect power
5. ii With the standard universal bracket option, pull the cable through and connect power
6. Ensure motor is fully inserted
7. Tighten motor slide lock screw

NOTE: HEAD BOX OPTION SHOWN, USE THE SAME PROCEDURE FOR STANDARD UNIVERSAL BRACKET OPTION

BLIND INSTALLATION CONTINUED

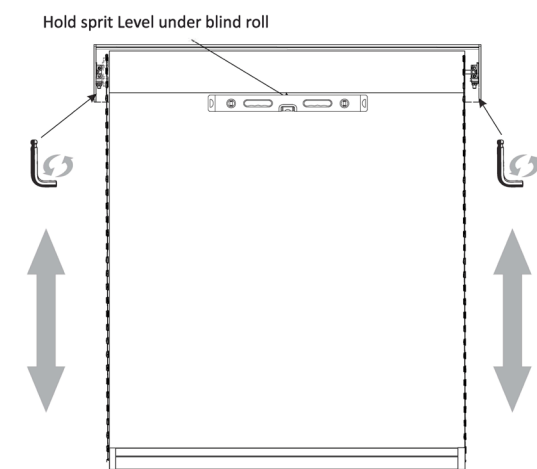
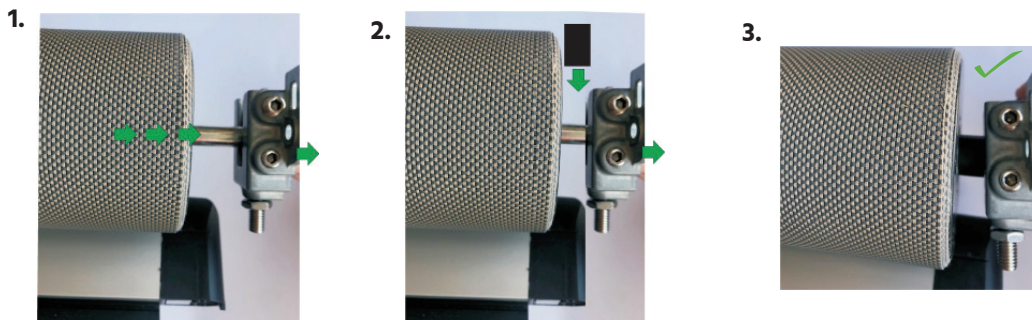
3. Levelling blind in brackets



Note:

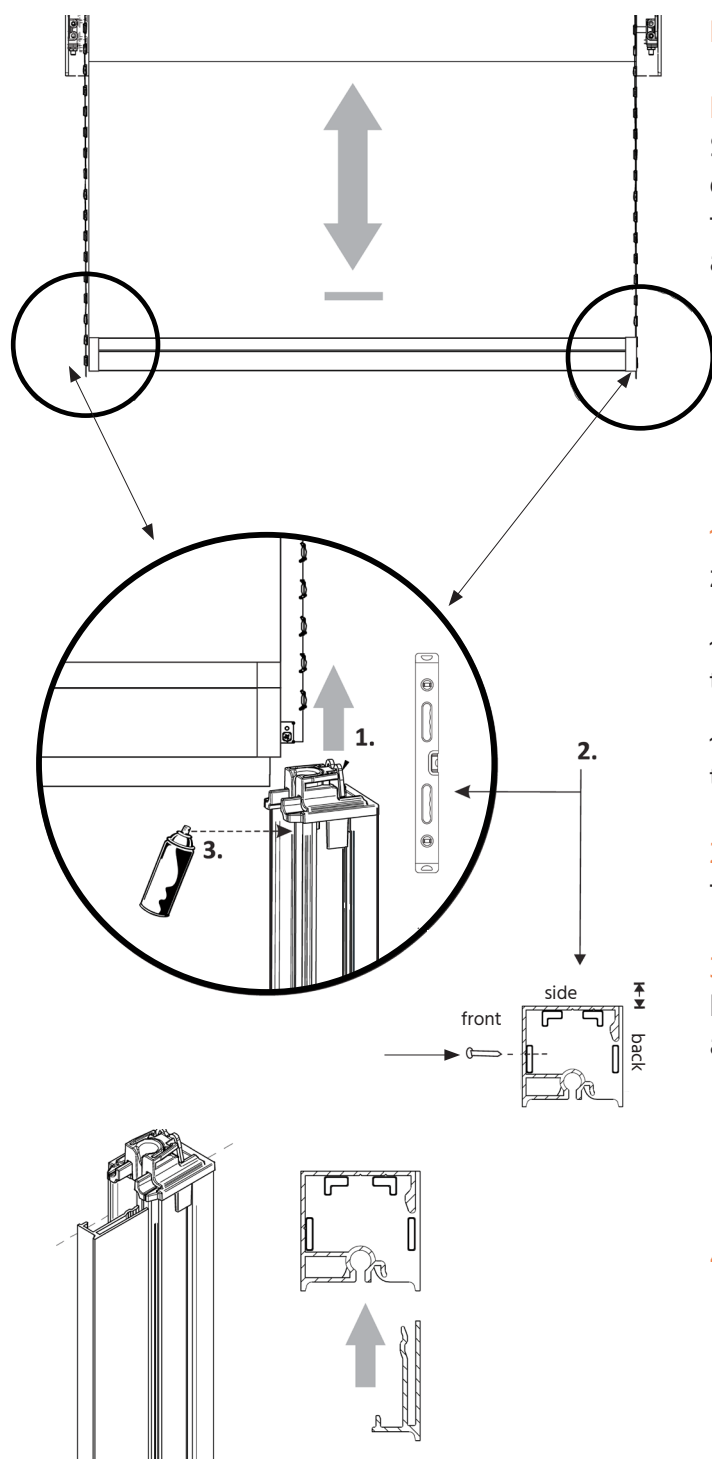
1. After installing the blind check it for level with a spirit level.
2. If adjustment is needed, adjust either or both sides with Level Adjusting Screw.
3. Once levelled, tighten Levelling Slide Locking Screws.

*Idler Locking Grommet



Note: Hold spirit level under blind roll

4 i. FACE FIT / SIDE CHANNEL OPTION INSTALLATION



REQUIRED PRIOR TO INSERTION OF VEROLOCK

Note: Connect power and program motor to Somfy RTS remote. Run the blind down to expose the tube and centre the blind. Set the top and bottom limits and run the blind down to approximately half way.

1. Slide the side channel with feeders up over the zip on sides of the blind.

1.i With the Head box option, push the channel hard up to the bottom of the head box.

1.ii With the standard universal bracket option, the top of the channel is 30mm short of the bottom of the bracket.

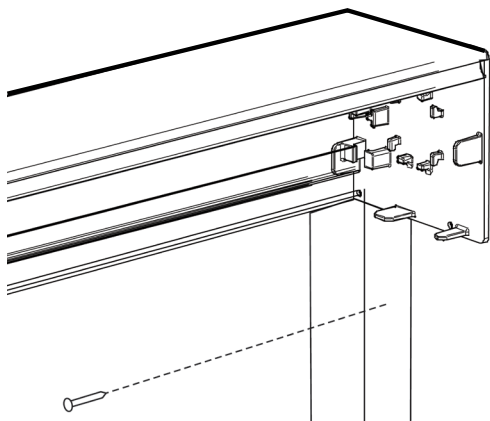
2. Level channel and fix through the front of the track at 500mm intervals.

3. Lubricate the channels with WD40 Anti Friction Dry PTFE lubricant and run the blind up and down to check function.

4. Install channel covers by sliding it in to position.

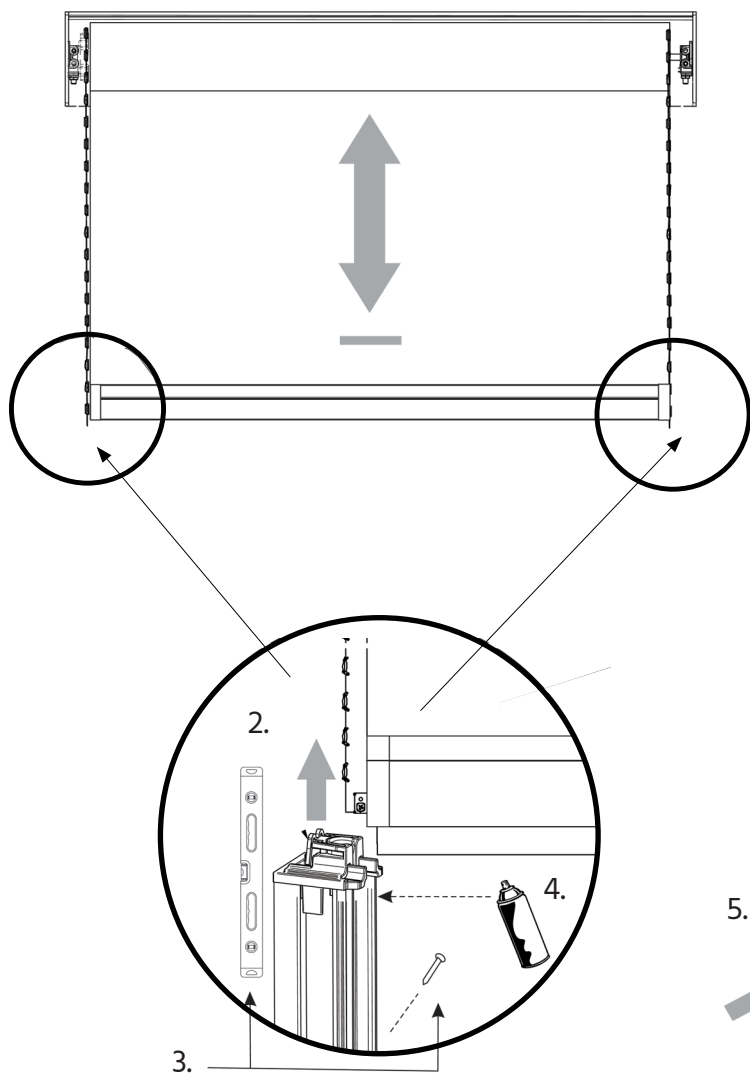
5. Install head box cover as per diagram.

4 ii. REVEAL FIT L CHANNEL OPTION INSTALLATION



Note:

1. Fix the L section to the wall on both sides



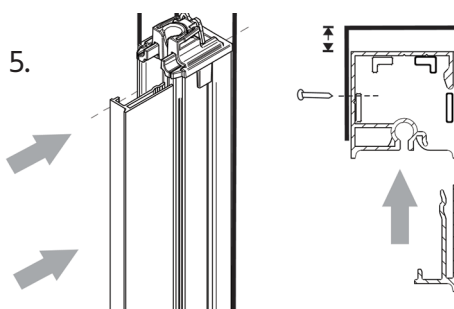
2. Slide the side channels with feeders up over the zip on sides of the blind. With the Head Box option, push the channel hard up to the bottom of the head box.

3. Level channel and fix through the back of the L channel at 500mm intervals.

4. Lubricate the channels with WD40 Anti Friction Dry PTFE lubricant spray and run the blind up and down to check the function.

5. Install channel covers.

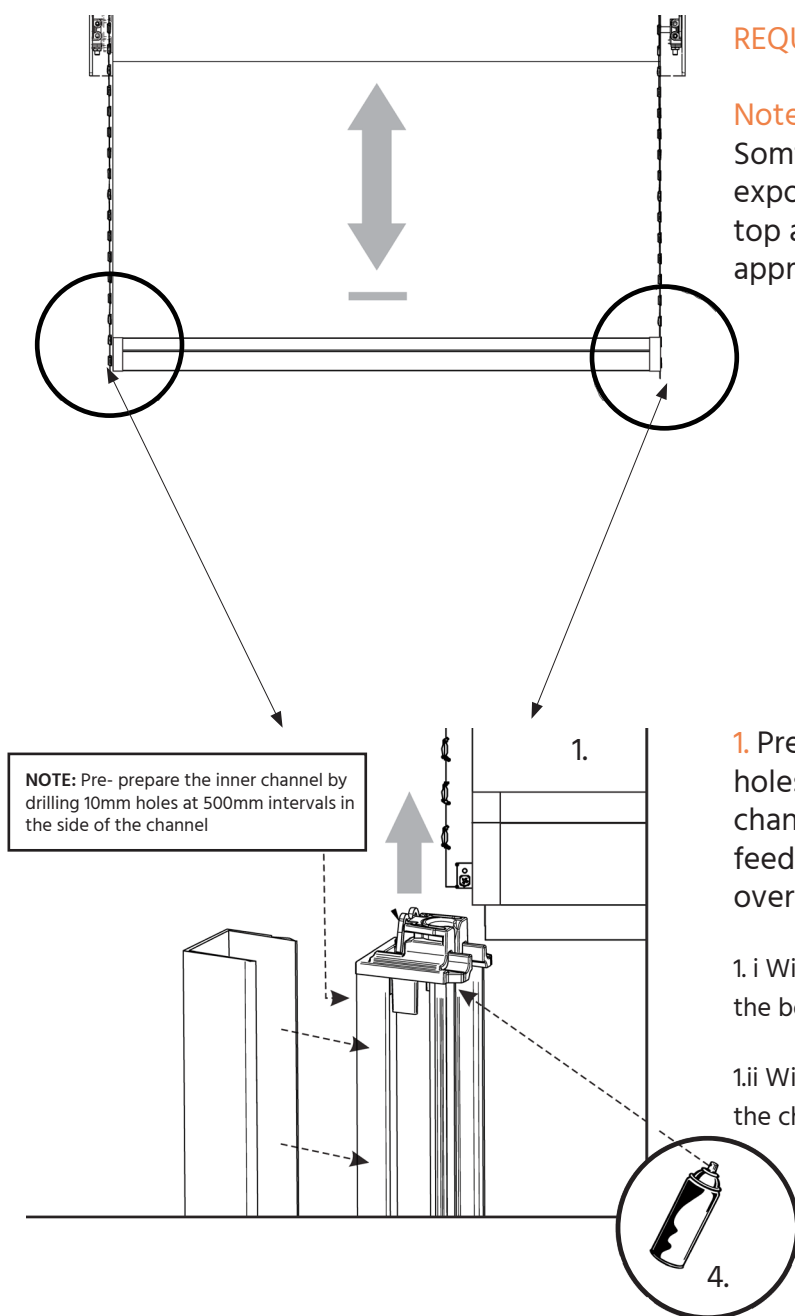
6. Install Head Box cover (optional).



4 iii. REVEAL / RECESS FIT U CHANNEL OPTION INSTALLATION

REQUIRED PRIOR TO INSERTION OF VEROLOCK

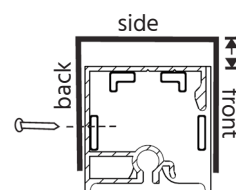
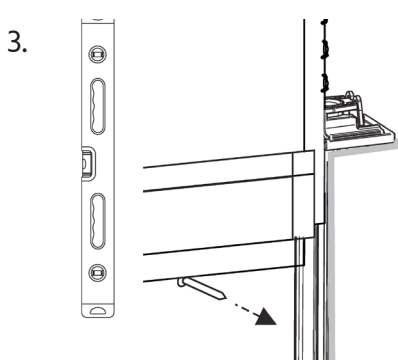
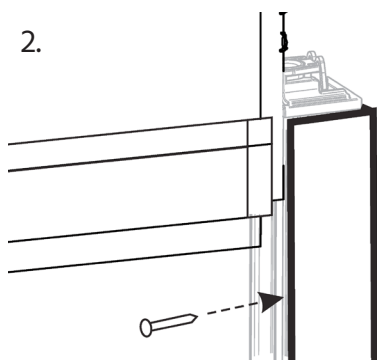
Note: Connect power and program motor to Somfy RTS remote. Run the blind down to expose the tube and centre the blind. Set the top and bottom limits and run the blind down to approximately half way.



1. Pre-prepare the inner channel by drilling 10mm holes at 500mm intervals in the side of the channels. Slide the side channels with feeders into the U sections together. Then slide over the zip on sides of the blind.

1.i With the Head box option, push the channel hard up to the bottom of the head box.

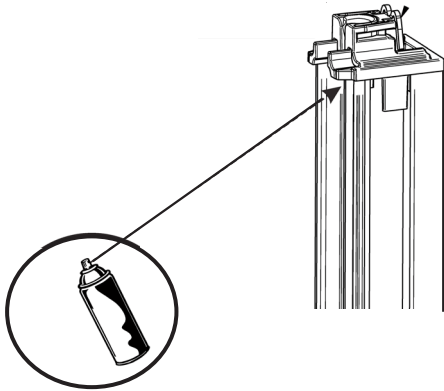
1.ii With the standard universal bracket option, the top of the channel is 30mm short of the bottom of the bracket.



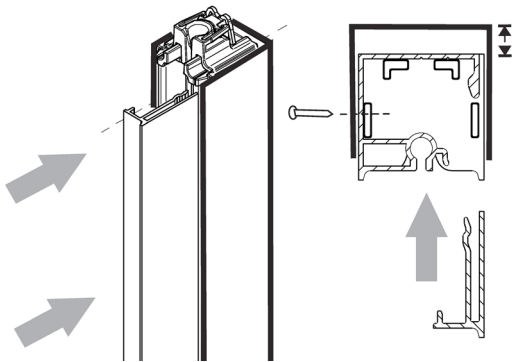
2. Fix the U sections by screwing through the 10mm holes in the side channels.

3. Level side channels and fix through the back of the U section at 500mm intervals.

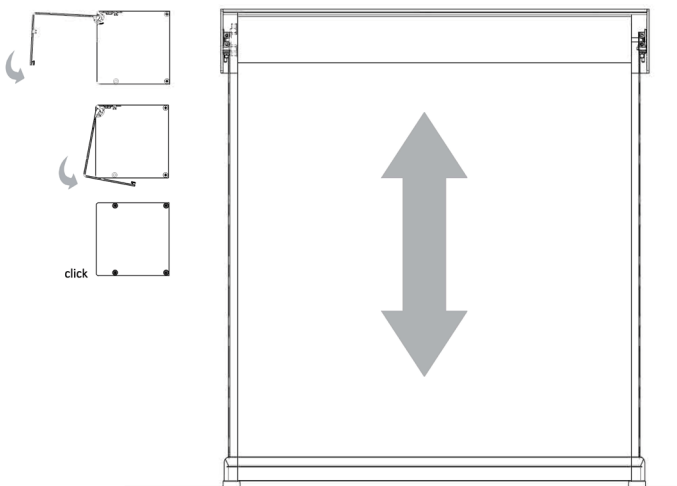
REVEAL FIT U CHANNEL OPTION INSTALLATION CONTINUED



4. Lubricate the channels with WD40 Anti Friction Dry PTFE lubricant and run the blind up and down to check function.



5. Install channel covers by sliding it in to position.



6. Test the blind

Note: Connect power and connect to Somfy RTS remote. Run the blind down to expose the tube and centre the blind. Set the top and bottom limits and run the blind up and down.

7. Install Head Box cover as per diagram.

TROUBLE SHOOTING: VEROLOCK

PROBLEM	CAUSE	SOLUTION
Ripples along sides of fabrics	Blind rolled up for an extended period of time	This occurrence is inherent to roller systems and is more prevalent in some fabrics. Leave blind down for 1-4 hours; most ripples should disappear.
	Not enough weight in base bar	Add ballast.
	Installation is not square	Check blind roll is installed level.
	Fabric permanently damaged due to inadequate handling	Replace fabric and ensure it is handled with care.
Blind does not fully open / jams	Side channel not levelled or parallel	Check that the side channels are level and parallel.
	Incorrect motor bottom limit used	Refer to motor instructions to reset bottom limit.
	Blind roll is not levelled	Ensure blind is installed level.
	Fabric is not installed straight	Ensure fabric is rolled straight onto the tube and base bar.
Blind gets jammed half way down	Side channels not level or parallel	Adjust side channels and fittings to rectify, insure blind is installed level.
	Uneven base bar	
	Obstruction preventing base bar lowering	Remove obstruction to allow base bar to reach its lowest point.

INSTALLED PRODUCT

VEROLOCK

1. NO HEAD BOX + VEROLOCK



2. HEAD BOX + VEROLOCK

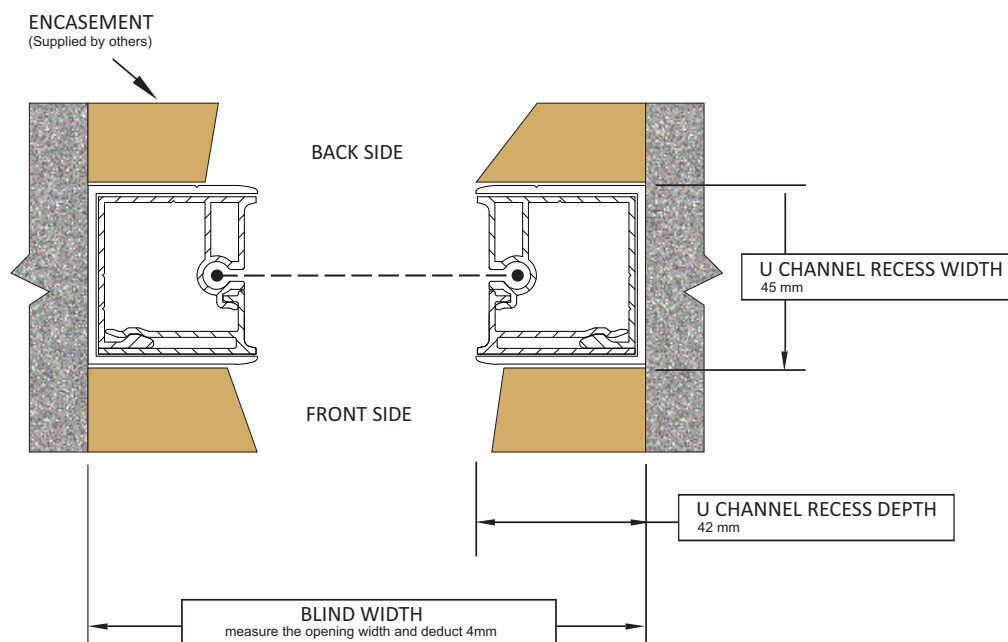


Verosol

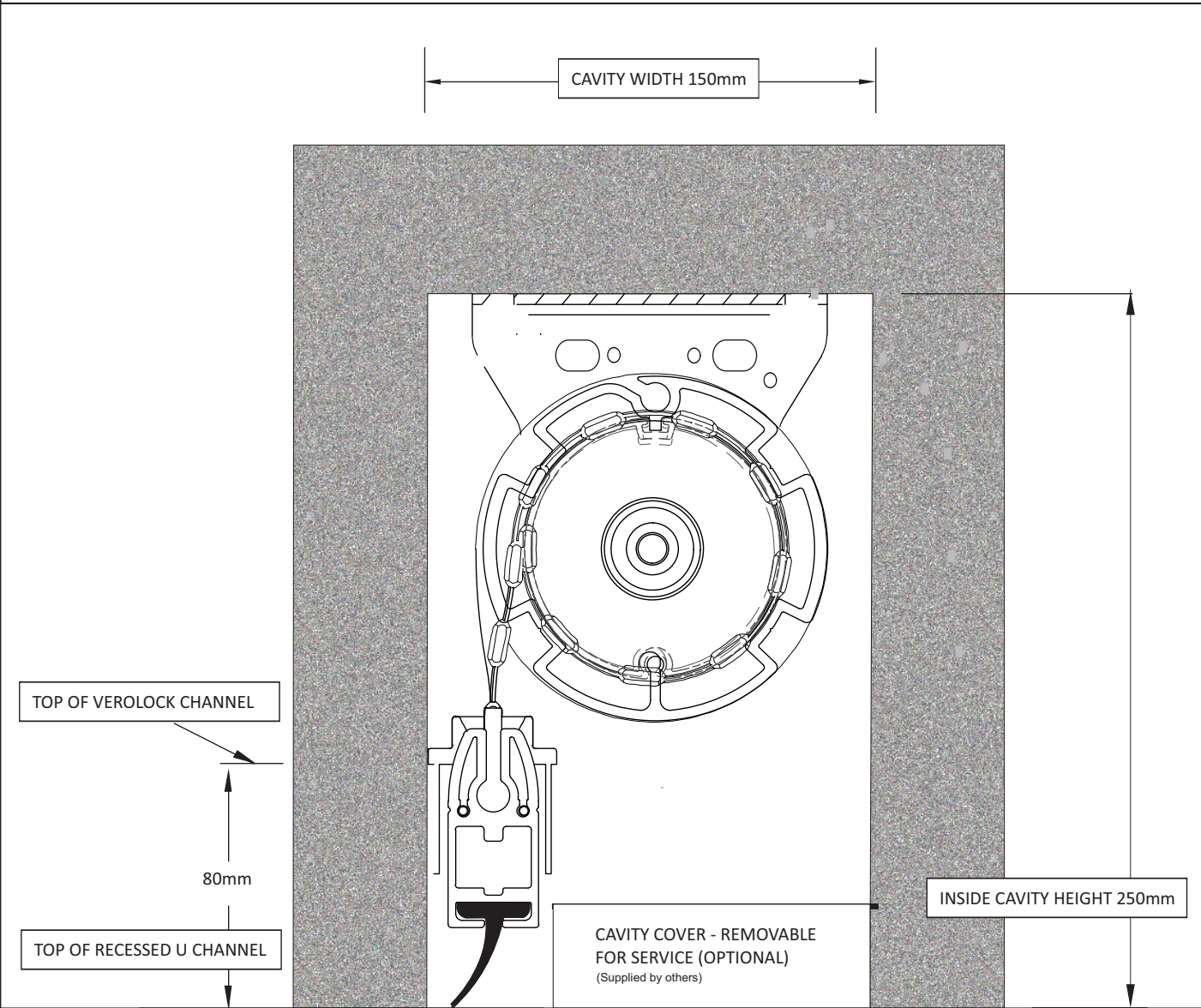
VeroLock U-Channel Pre installation example



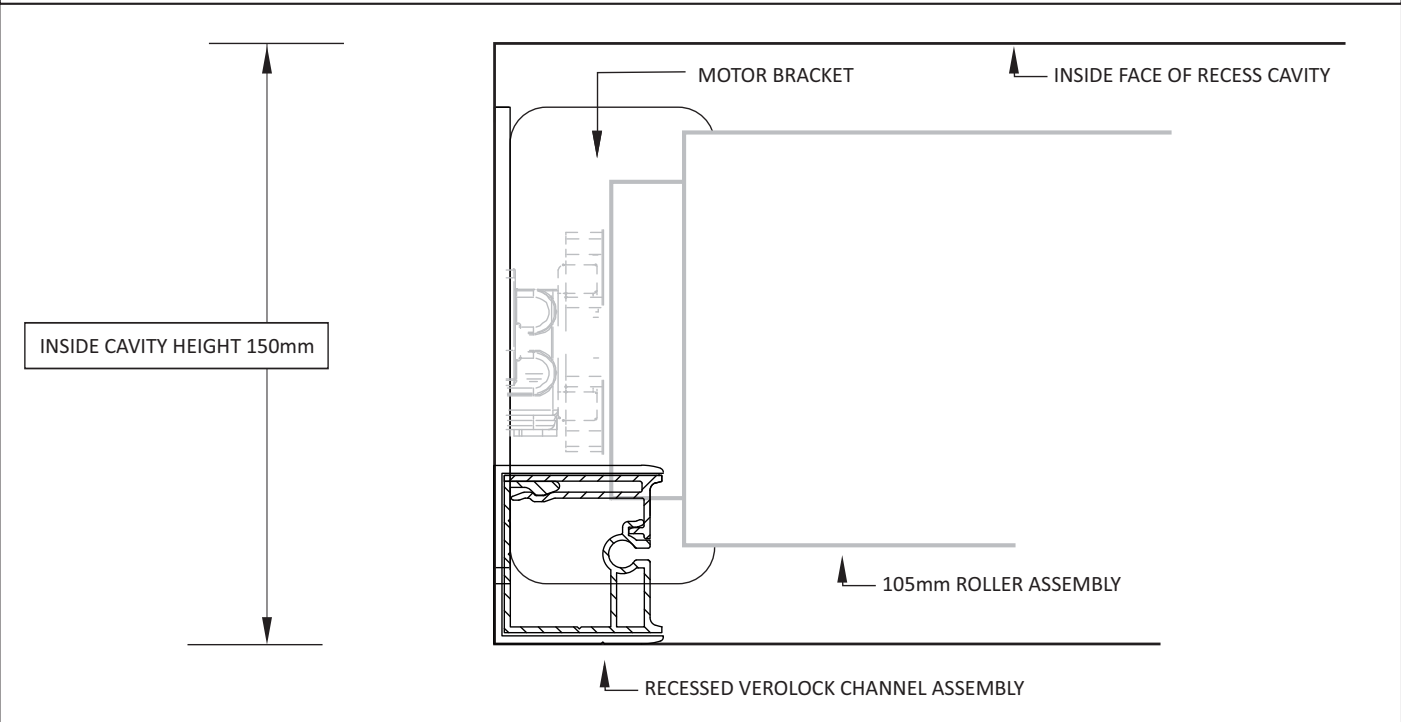
VeroLock Recessed Track Detail



VeroLock Built-in Assembly Installation With Recessed Track Side Elevation



VeroLock Built-in Assembly Installation With Recessed Track Plan View





Verosol Australia Pty Ltd
21 Amour Street
Revesby NSW 2212
Tel: 1800 721 404

Expand your comfort zone

Verosol