

V.01.07.18

# Verosol

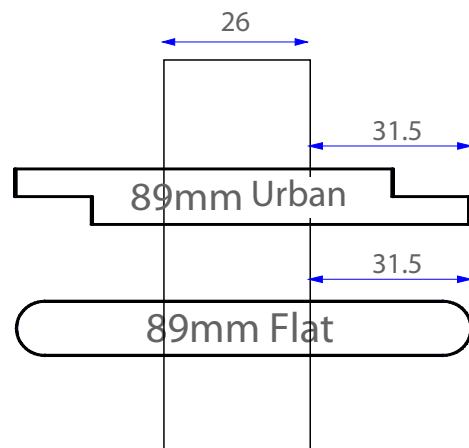
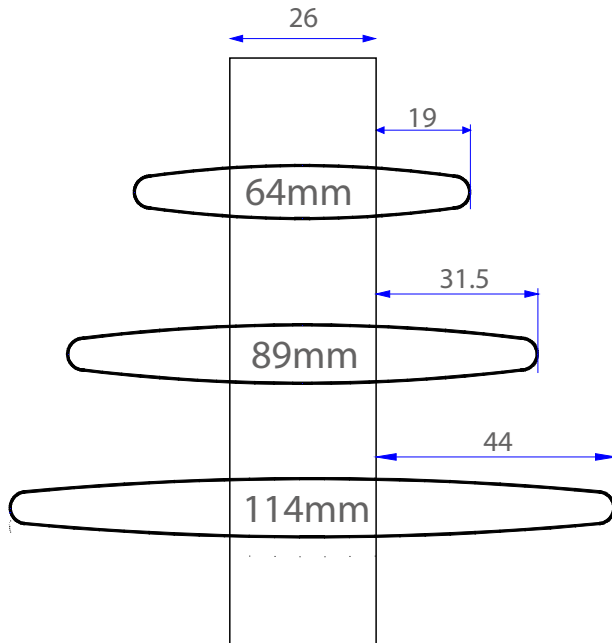
AMBIENCE HARDWOOD



# BLADE OPTIONS

\* ALL MEASUREMENTS ARE IN MILLIMETERS

Blade Profile	Elliptical	Elliptical	Flat	Urban Block	Elliptical
Blade Sizes	64	89	89	89	114
Blade Thickness	10	11	11	12	11



## MINIMUM REVEAL DEPTHS

Minimum reveal depths can be found on each installation method header page. Please measure from the most protruding object in the reveal. The most common window types are listed below with reminders of where to measure from to confirm that there is enough reveal depth for your chosen installation method.

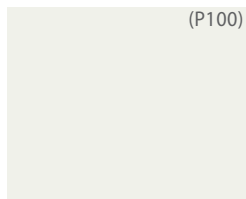
**Double-hung window:** handles that lift the inside window

**Casement window:** crank handle

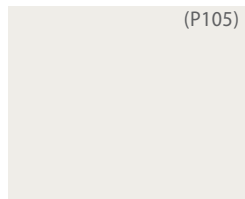
**Sliding windows:** slider handle/ storm bar

# COLOUR OPTIONS

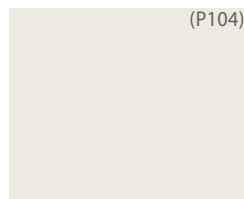
## PAINTED:



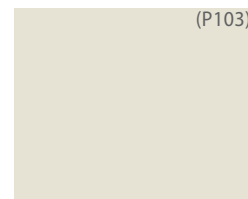
White



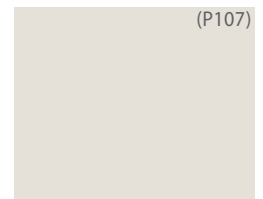
Silk White



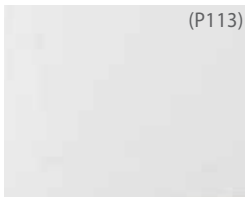
Shell



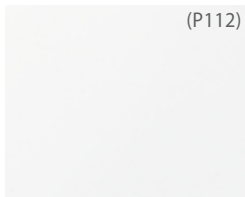
Ivory



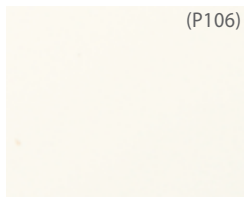
Alabaster



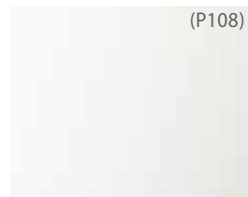
Whisper White



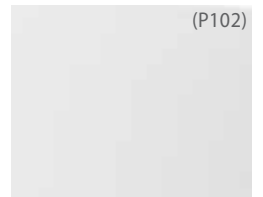
Antique White



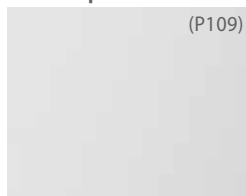
Pearl



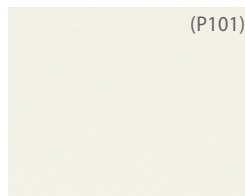
Dove



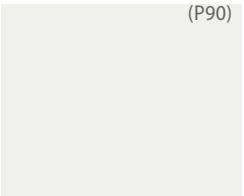
Sandy Day



Grey



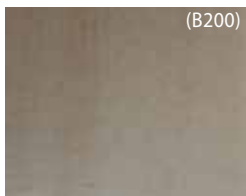
Clotted Cream



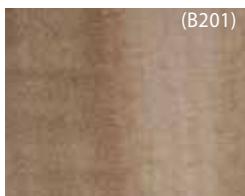
TWO White

Please ensure that you have the most up to date swatching as colors may vary between supplied decks. Contact your sales representative to order new swatching if needed.

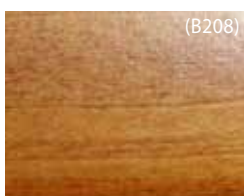
## STAINED:



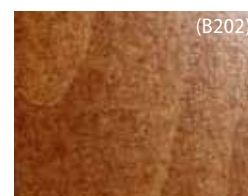
Natural



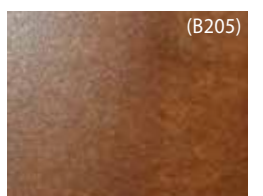
Light Oak



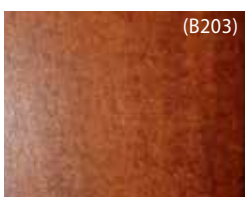
Honey Oak



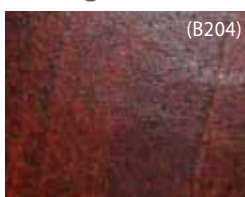
Sugar Maple



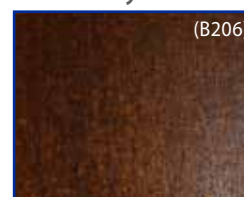
Walnut



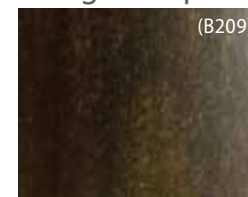
Golden Oak



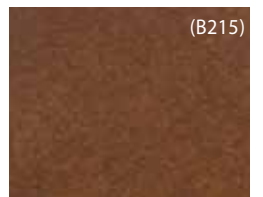
Cherry



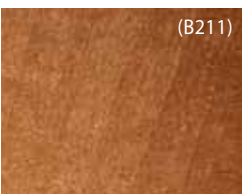
Black Walnut



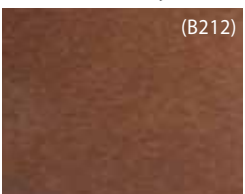
Wenge



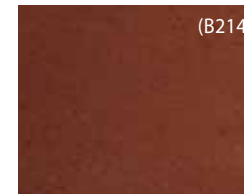
Dark Java



Warm Cherry



Rich Mahogany



Auburn Chestnut



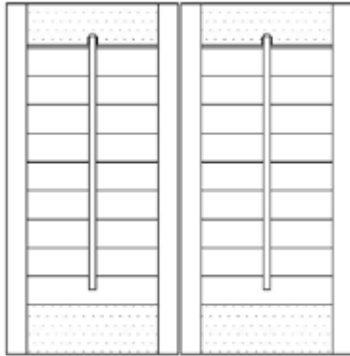
## CUSTOM COLOURS:

Choose from the Dulux World of Colour Series II fan deck.

**IMPORTANT NOTE:** Custom colours are matched to the Dulux World of Colour fan deck. If you are unsure if the requested colour is from this deck it is best to supply a sample that will be sent to our factory for colour matching.

# TILT RODS

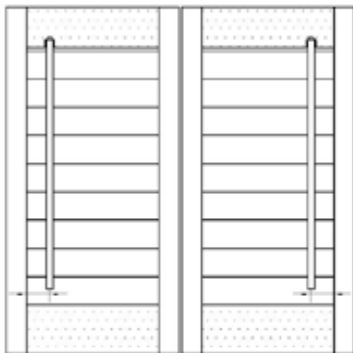
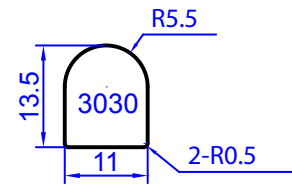
## FRONT FACING TILT RODS



### TRADITIONAL CENTER

The classic timber tilt rod.

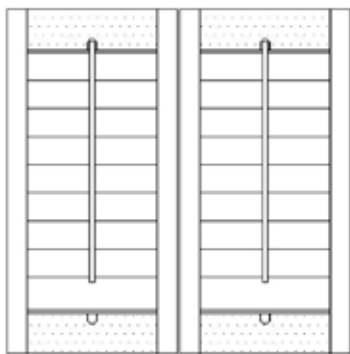
Default Position: Front of panel



### OFFSET 40

An alternative take on the traditional center rotation. Minimizes view interruption.

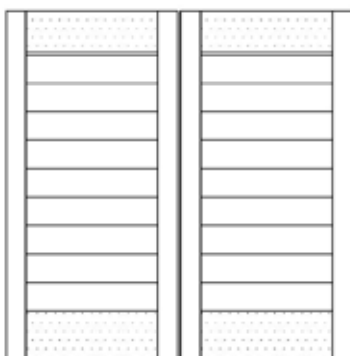
Default Position: Front of panel on hinged side.



### EURO 180: AVAILABLE IN BOTH TILT RODS

Provides 180 degrees of rotation.

## REAR FACING TILT ROD



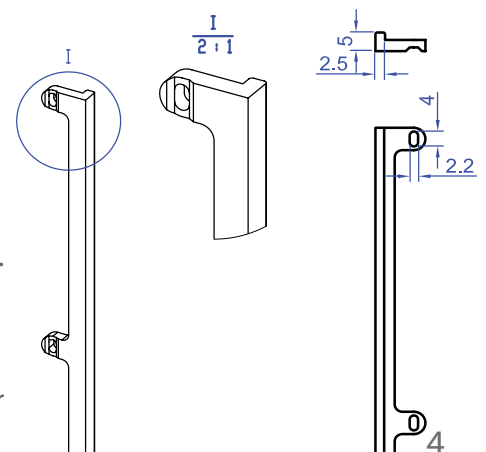
### CLEARVIEW

Best option for an uninterrupted view.

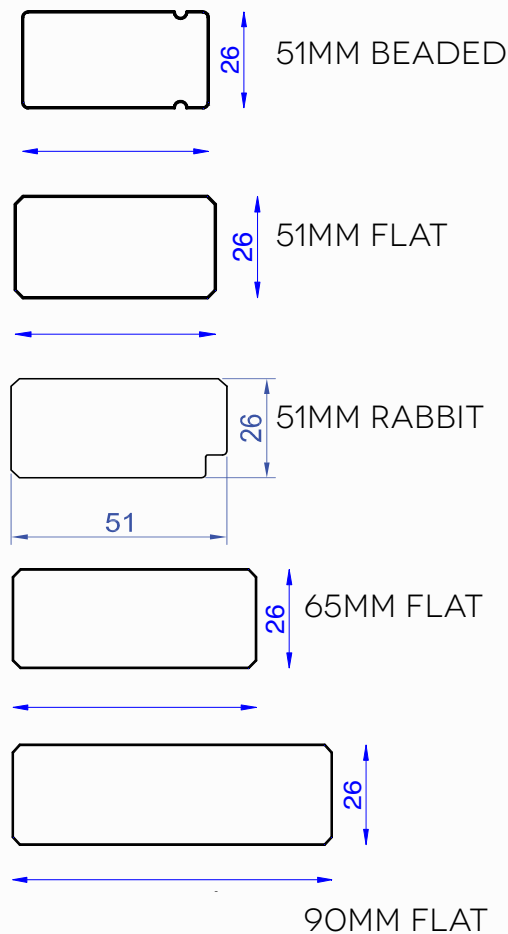
Default Position: Rear of panel on hinged side.

### EURO CLEARVIEW

This option is a non-warranty item only for blade closure only.



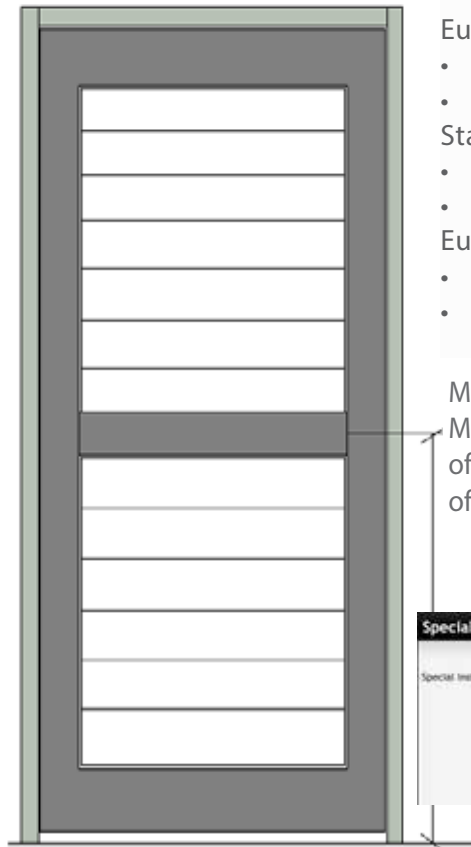
## STILES



NOTE: Stiles will be 41mm on joined panels.

## MID-RAILS

HOW TO MEASURE:



## Available Sizes

Standard Rails - Centre Tilt:

- 83mm x 20mm (2018)
- 109mm x 20mm (2019)

Euro Rails Centre Tilt:

- 70mm x 20mm (2025)
- 95mm x 25mm (2026)

Standard Rails - Clearview Tilt:

- 83mm x 20mm (2018)
- 109mm x 20mm (2019)

Euro Rails - Clearview Tilt:

- 70mm x 20mm (2025)
- 95mm x 25mm (2026)

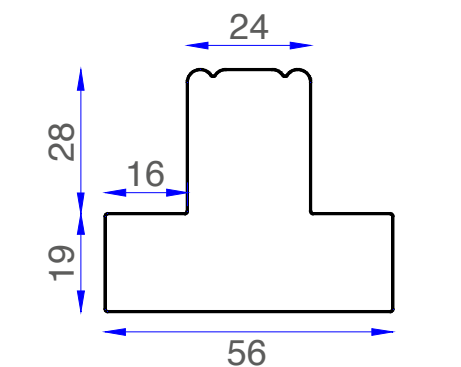
Mid-rail:

Measure from bottom of opening to centerpoint of required mid-rail.

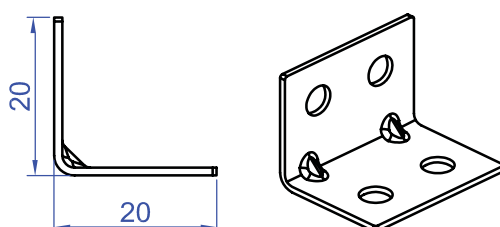


Mid-rail placement is within + or - one blade size. If position is critical, please select 'Critical Midrail' option in special instructions.

## T-POST



T POST SUPPORT BRACKET



## UNEVEN PANEL WIDTHS

No. 1: SQM: 0.0000

Product\*:

Location:

Width\*:

Height\*:

Mid-Rail Height:

Uneven Panel Widths: ☒ Yes ☐ No

Sub Widths:

☒

# HINGES

## STANDARD HINGE COLOURS

Panel Colour	Hinge Colour
Alabaster	Ivory
Antique White	White
Clotted Cream	Ivory
Dove	Ivory
Grey	Stainless Steel
Ivory	Ivory
Pearl	Ivory
Sandy Day	Stainless Steel
Shell	White
Silk White	White
Stains	Stainless Steel
Whisper White	White
White	White

## NUMBER OF HINGES PER PANEL

Panel Height	Hinge Quantity
< 1220mm	2
1220mm - 1980mm	3
1980mm - 2440mm	4
2440mm - 3000mm	5

## AVAILABLE HINGE COLOURS

Hinge Colour	Hinge Type			
	Non-Mortise	Pivot	Bi-Fold	L
Ivory	Yes	Yes	Yes	
Stainless Steel	Yes	Yes	Yes	Yes
White	Yes	Yes	Yes	Yes

### NON-MORTISE HINGE



Ivory

### PIVOT HINGE



White

### BI-FOLD HINGE



Stainless Steel

# BULLET MAGNETS

Bullet magnets come standard rebated into the top and bottom of the panel. No bullet magnets are supplied for Sliding, Muti-fold or Fixed panels. The below table outlines the striker plate placement with respective panel configurations.

Frame	Hinge	Mounting	Light Block	Striker Plates	Notes
Framed Panels	N/A	N/A	No	Round, attached to the fame	
3 Sided Frame	N/A	N/A	No	Round, attached to frame at the top and light block at the bottom	If "10mm door clearance" is selcted, no light block or bottom magnet is supplied
Panel Only	Non-Mortise	Inside	Yes	2 Round, attached to beading	Customer to request light block in the notes.
Panel Only	Non-Mortise	Inside	No	2 L Strikers, supplied loose	
Panel only	Non-Mortise	Outside	No	2 L striker or 2 round, supplied loose	Customer to advise which they would prefer
Panel Only	Pivot	Inside	Yes	2 Roud, attached to beading	
Panel Only	Pivot	Inside	No	2 L Striker, supplied loose	
Panel Only	Pivot	Outside	No	2 Round, supplied loose	

**NOTE:** If frame or panel is supplied with a top section and no bottom section, a round striker plate is supplied for the top and a L supplied for the bottom.

**REVERSE HINGED:** The magnets will be inserted into the front of the panel by default.

# INSTALLATION METHOD: HINGED IN Z FRAME

USED ONLY WHEN MOUNTING INSIDE A REVEAL.



## BEFORE YOU ORDER

### MINIMUM REVEAL DEPTHS\*

\*Be sure to always measure from the most protruding object in the reveal.

	64mm Blade		89mm Blade		114mm Blade	
	Clearview	Center	Clearview	Center	Clearview	Center
Z Frame	39	34	52	45	64	57

### LIMITATIONS

Finish	Installation Method	Width			Height			Panel Breaks			
		Min	Max	Max Non Warranty	Min	Max	Max Non Warranty	Mid-Rail(s) Required	Approximate Split Rotation by Blade Size		
									64	89	114
Painted	Hinged in Z Frame	200	1050	1200	400	3000	N/A	1800, 2700	1100	1300	1200
	Double Hinged	200	600	700	400	3000	N/A	1800, 2700	1100	1300	1200
Stained	Hinged in Z Frame	200	850	900	400	3000	N/A	1800, 2700	1100	1300	1200
	Double Hinged	200	550	600	400	3000	N/A	1800, 2700	1100	1300	1200

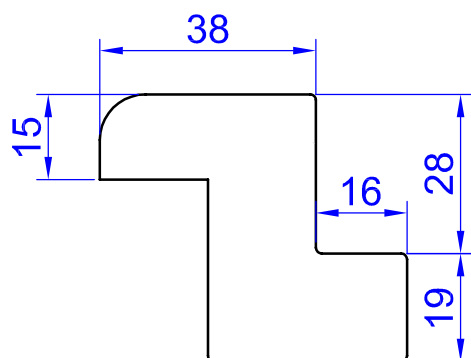
### DEDUCTIONS

Panel and Reveal	Between Meeting Panels	Between Meeting Panels with D Mould	Between Panel and Frame	Between Frame and Reveal	Hinge Deductions	Overall Panel Deduction
2.5	2.5	5	2.5	2	2.5	5

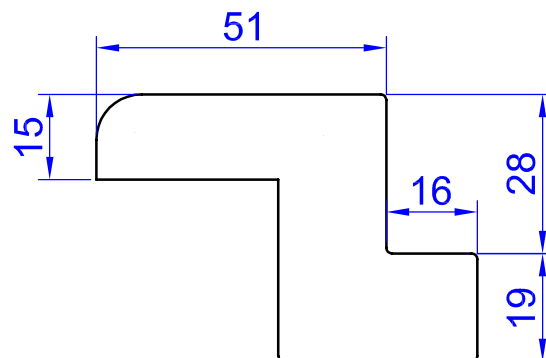


## Z FRAME OPTIONS

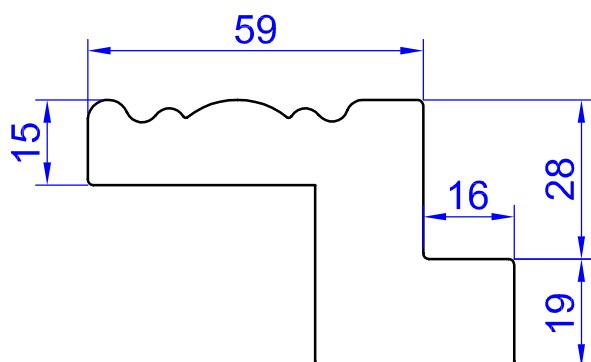
Z STANDARD (4023)



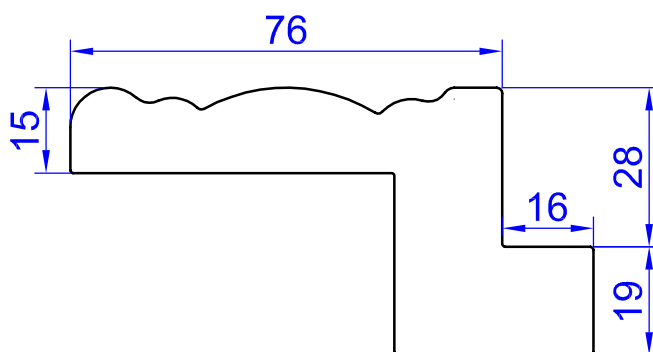
Z LARGE LIP (4022)



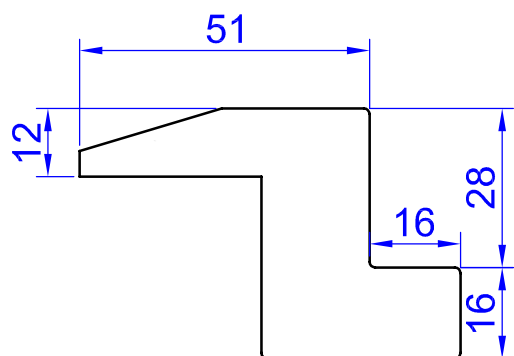
Z DECO (4008)



Z CROWN (4009)

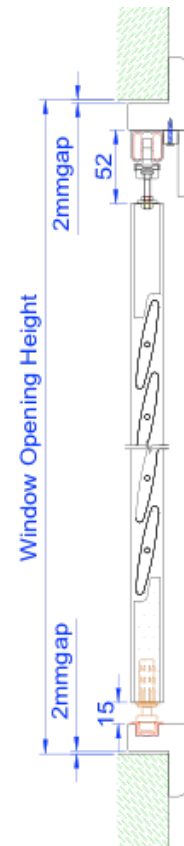
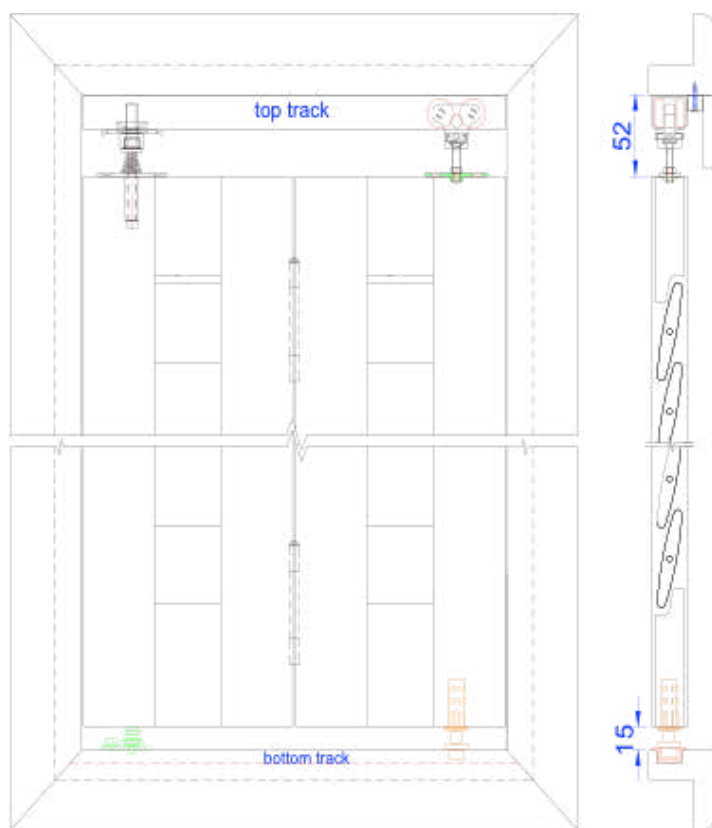


BEVELLED Z (4021)

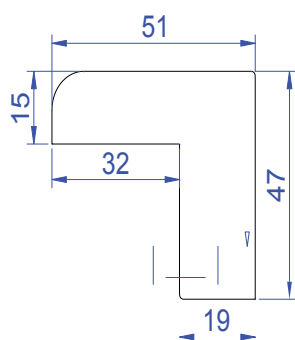




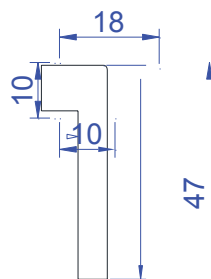
## Z FRAME WITH TRACKING



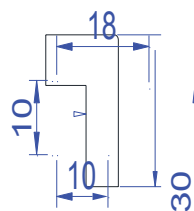
Currently only available with the Large Lip Z Frame. Wheel carrier bracket will be pre-installed on the panel. Top pivot and wheel brackets will be installed in the track.

**4070**

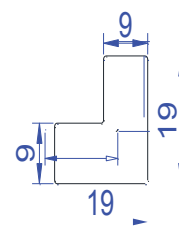
Standard Z

**4071**

Fascia

**4072**

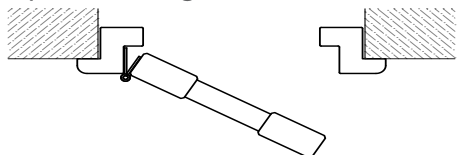
Light Block - Bottom

**4052**

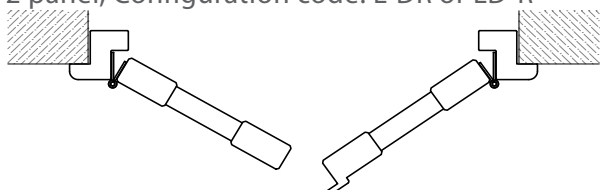
Light Block - Sides

# PANEL CONFIGURATION EXAMPLES

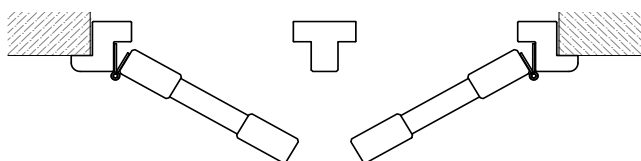
1 panel, Configuration code: L or R



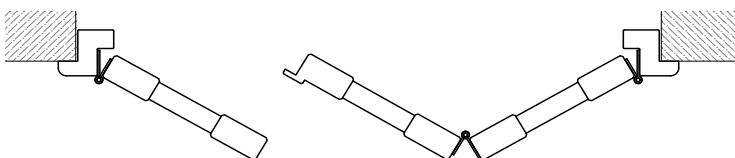
2 panel, Configuration code: L-DR or LD-R



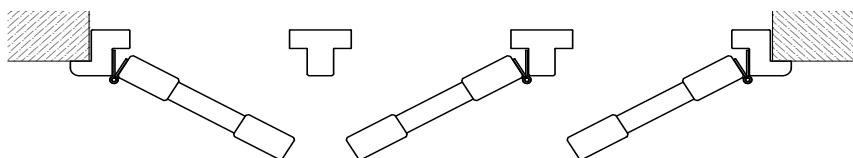
2 panel with T Post, Configuration code: LTR



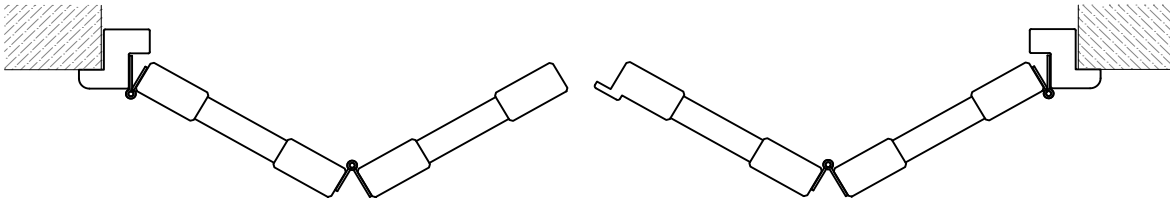
3 panel, Configuration code: L-DRR or LLD-R



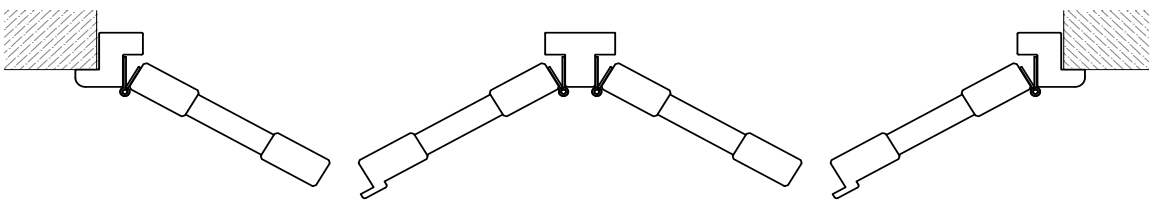
3 panel with T post, Configuration code: LTRTR or LTLTR



4 panel, Configuration code: LL-DRR or LLD-RR

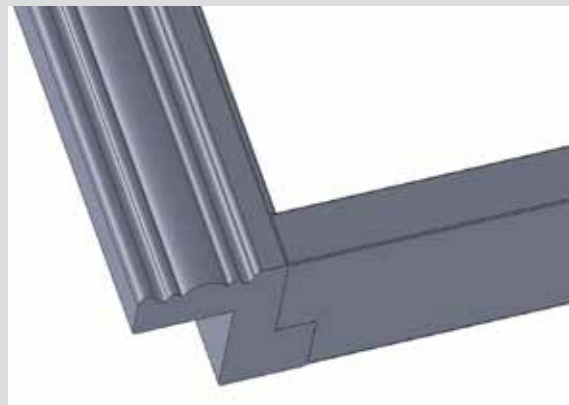


4 panel with T post, Configuration code: L-DRTL-DR or LTRTLR



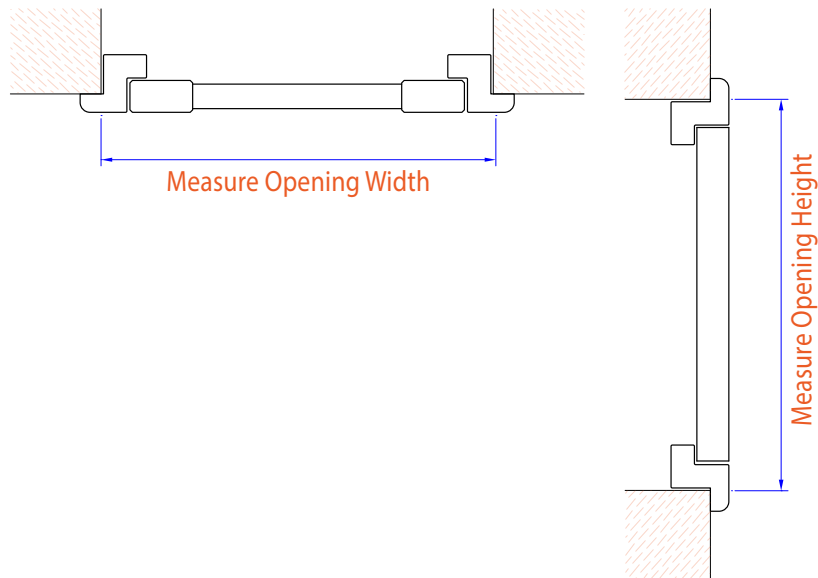
## OPTION: SILL PLATE

A Sill Plate is simply an L Frame used for one or more sides of the frame, where a Z frame will not fit. For example: a window with a Sill, cannot use a Z frame on the sill side, so a Sill Plate is used. To order, choose Sill Plate in the Frame Options drop down field.



# HOW TO MEASURE

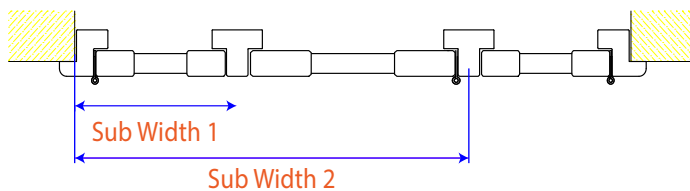
## Hinged in Z Frame: Reveal Mount



If you would like T-Posts, you have 2 options:

1. EVEN PANEL SPACING: Enter the T-Posts in your panel configuration and we will do the rest.
2. UNEVEN PANEL SPACING: Click 'yes' on uneven panel widths and enter your sub-widths.

## T Posts w/ Uneven Panel Widths



Uneven Panel Widths
 ☒ Yes ☐ No

Sub Widths
 

Enter Width 1

Enter Width 2

# HOW TO ORDER

No. 1: + SQM: 0.0000

Product\*: HP Painted
 Color\*: - select here -
 Location: - select here -
 Width\*: Enter Width
 Height\*: Enter Height
 Mid-Rail Height: +
 Uneven Panel Widths: ☐ Yes ☐ No

Blade\*: - select here -
 Tilt Rod\*: - select here -
 Stiles\*: - select here -
 Installation Method\*: Hinged in Z Frame
 

Installation Type\*:
 

- select here -
 Z Deco
 Z Large Lip
 Z Standard

 Mount\*:
 Panel Configuration\*: - select here -

Split Rotation Height (If Required):
 French Door Cut-out:
 

Frame Options\*:
 

- select here -
 3 Sided
 4 Sided Frame
 Sill Plate On Bottom
 Sill Plate On Left
 Sill Plate On Right
 Sill Plate On Top

Special Instructions:
 Extras:
 Notes:
 Needs Drawing: ☐
 Upload Drawing/Image: Choose File No file chosen

# INSTALLATION METHOD: HINGED IN L FRAME



## BEFORE YOU ORDER

### MINIMUM REVEAL DEPTHS\*

\*Be sure to always measure from the most protruding object in the reveal.

	64mm Blade		89mm Blade		114mm Blade	
	Clearview	Center	Clearview	Center	Clearview	Center
L Frame	54	47	67	60	79	72

## LIMITATIONS

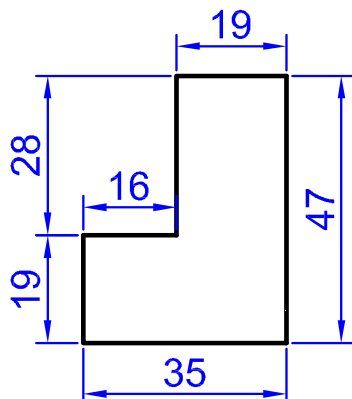
Finish	Installation Method	Width			Height			Panel Breaks			
		Min	Max	Max Non Warranty	Min	Max	Max Non Warranty	Mid-Rail(s) Required	Approximate Split Rotation by Blade Size		
									64	89	114
Painted	Hinged in L Frame	200	1050	1200	400	3000	N/A	1800, 2700	1100	1300	1200
	Double Hinged	200	600	700	400	3000	N/A	1800, 2700	1100	1300	1200
Stained	Hinged in L Frame	200	850	900	400	3000	N/A	1800, 2700	1100	1300	1200
	Double Hinged	200	550	600	400	3000	N/A	1800, 2700	1100	1300	1200

## DEDUCTIONS

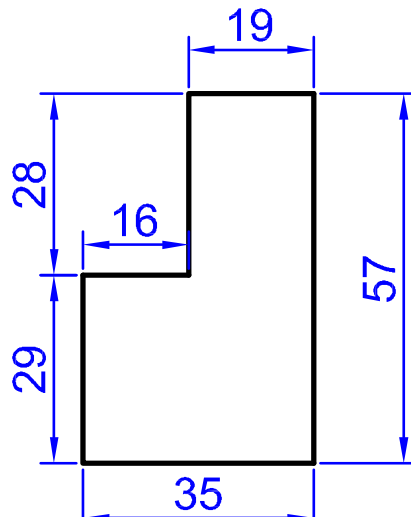
Panel and Reveal	Between Meeting Panels	Between Meeting Panels with D Mould	Between Panel and Frame	Between Frame and Reveal	Hinge Deductions	Overall Panel Deduction
2.5	2.5	5	2.5	2	2.5	5

## L FRAME OPTIONS

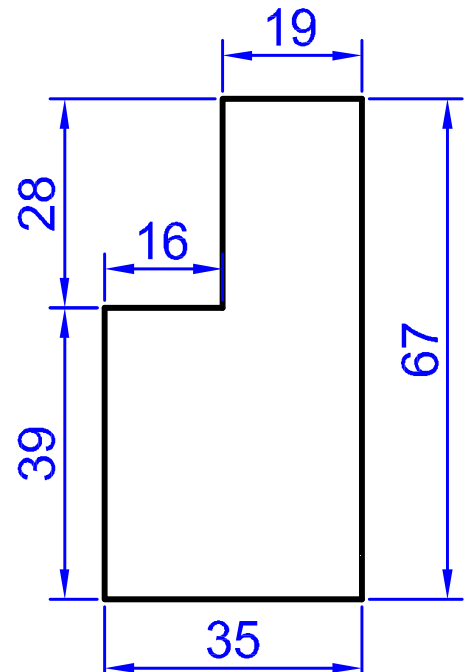
FLAT 47MM (4041)



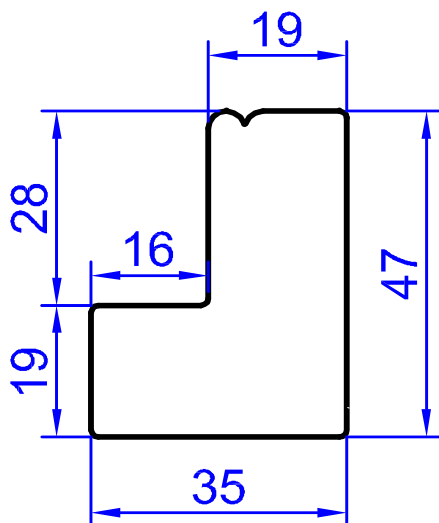
FLAT 57MM (4033)



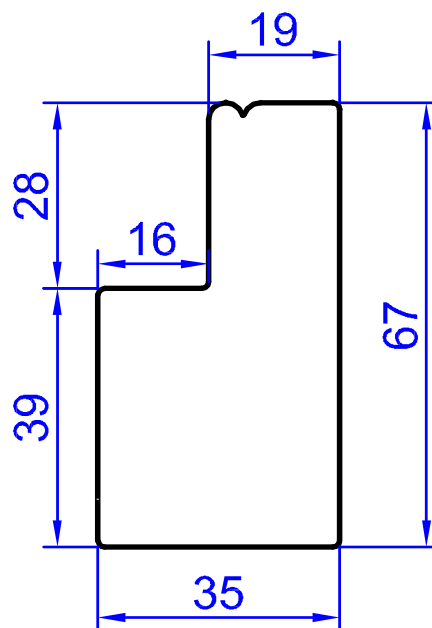
FLAT 67MM (4034)



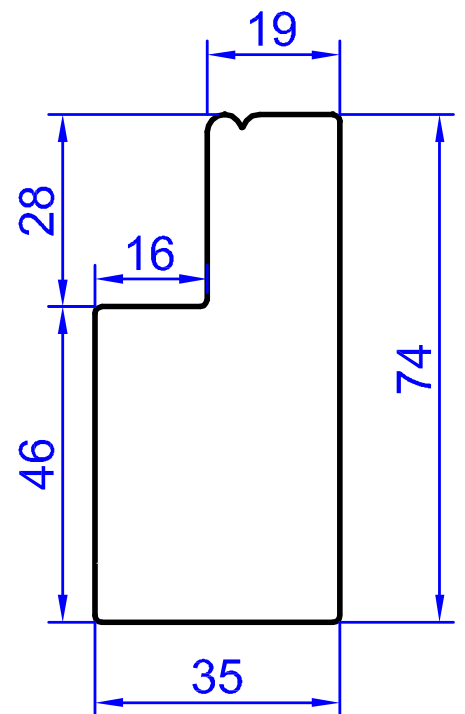
BEADED 47MM (4025)



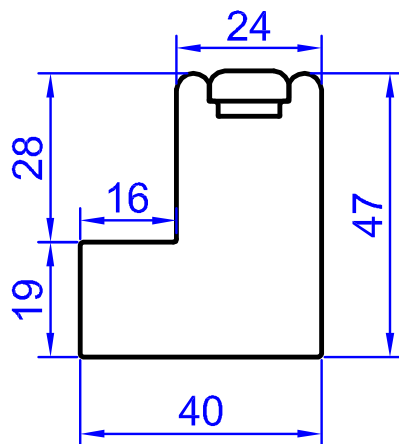
BEADED 67MM (4036)



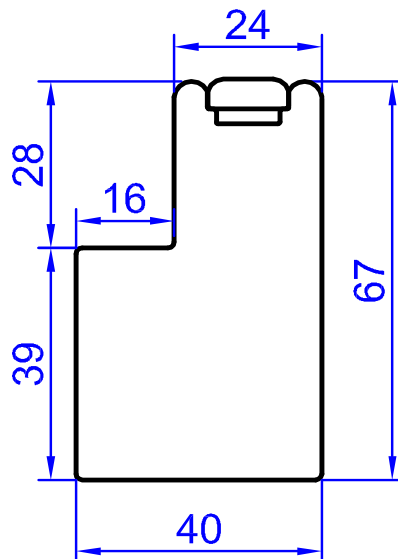
BEADED 74MM (4037)



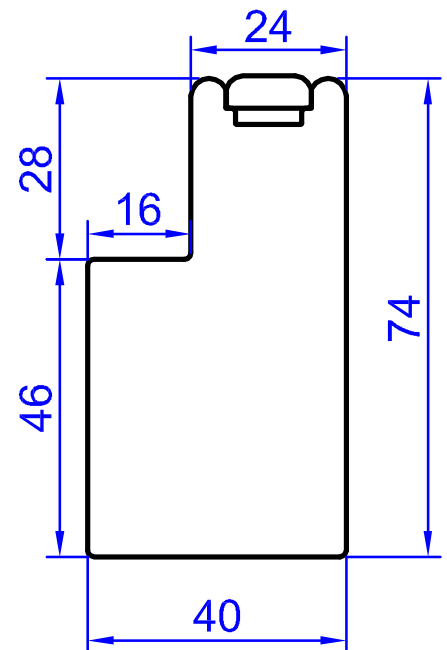
INSERT 47MM (4029)



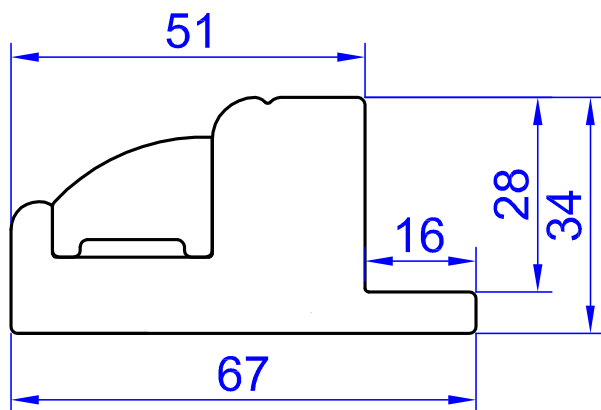
INSERT 67MM (4024)



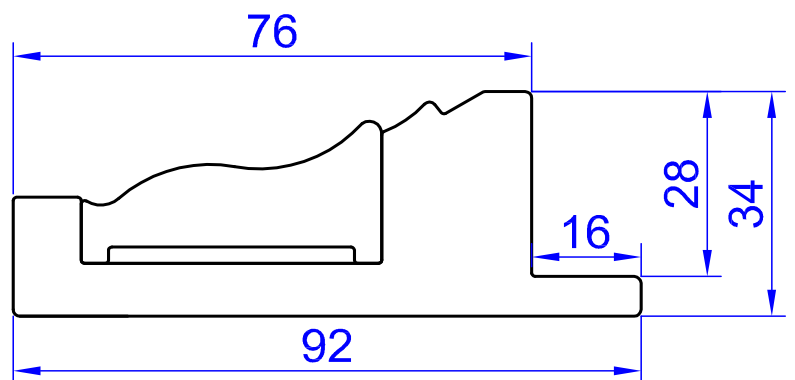
INSERT 74MM (4035)



FACE FIT DECO MODERN (4002)



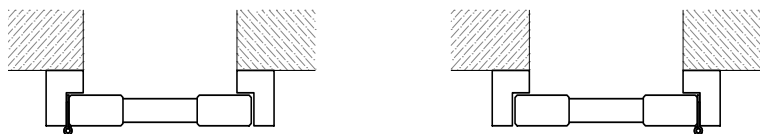
FACE FIT DECO TRADITIONAL (4003)



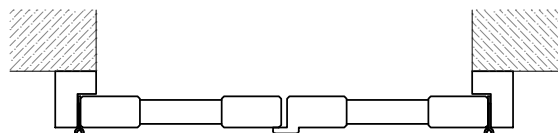


# PANEL CONFIGURATION EXAMPLES

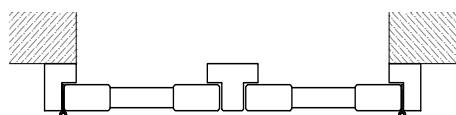
1 panel Configuration code: L or R



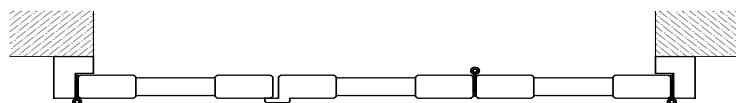
2 panel, Configuration code: L-DR or LD-R



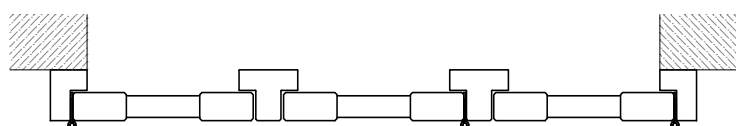
2 panel with T post, Configuration code: LTR



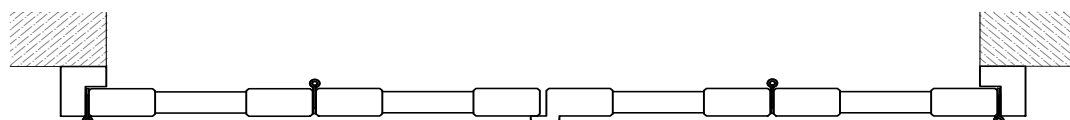
3 panel, Configuration code: L-DRR or LLD-R



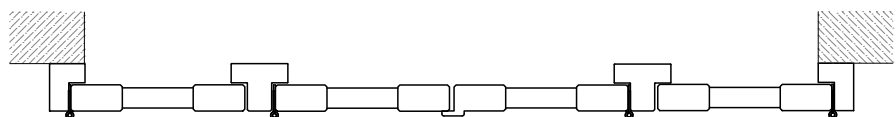
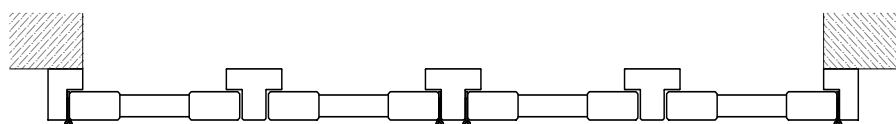
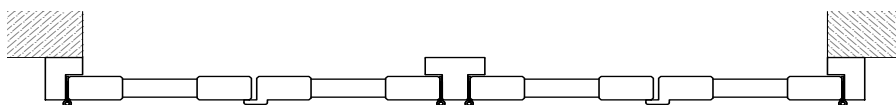
3 panel with T post, Configuration code: LTRTR or LTLTR



4 panel, Configuration code: LL-DRR or LLD-RR

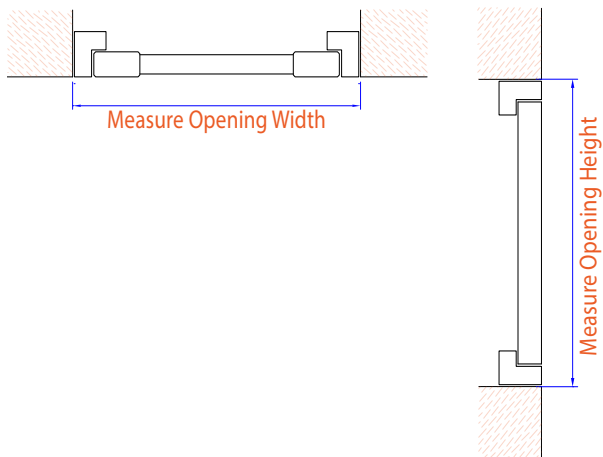


4 panel with T post, Configuration code: L-DRTL-DR or LRTLTR or LTL-DRTR

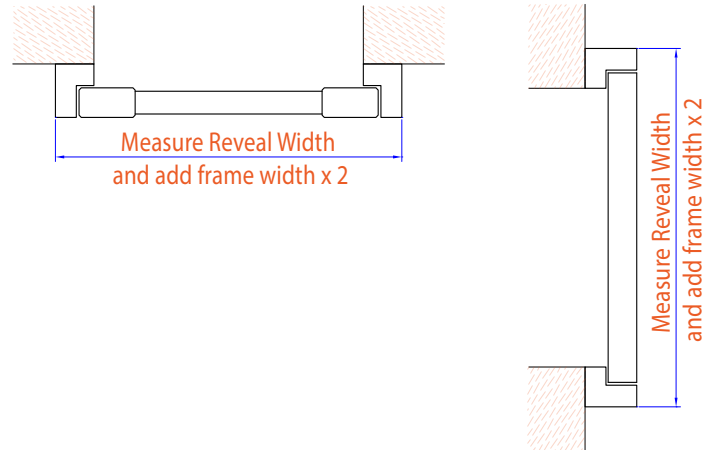


# HOW TO MEASURE

## Hinged in L Frame: Reveal Mount



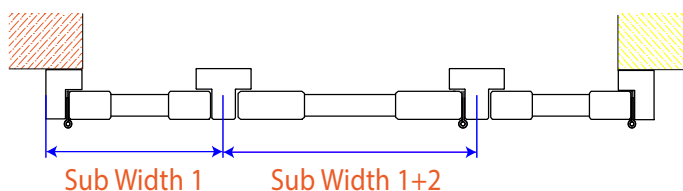
## Hinged in L Frame: Face Mount



If you would like T-Posts, you have 2 options:

1. EVEN PANEL SPACING: Enter the T-Posts in your panel configuration and we will do the rest.
2. UNEVEN PANEL SPACING: Click 'yes' on uneven panel widths and enter your sub-widths.

## T Posts w/ Uneven Panel Widths



Uneven Panel Widths
 ☒ Yes
 ☐ No

Sub Widths
 

Enter Width 1

Enter Width 2

# HOW TO ORDER

No. 1: SQM: 0.0000

Product\*: HP Painted
 Color\*: - select here -

Location: - select here -
 Blade\*: - select here -

Width\*: Enter Width
 Tilt Rod\*: - select here -

Height\*: Enter Height
 Stiles\*: - select here -

Mid-Rail Height: +
 Installation Method\*:

Uneven Panel Widths: ☒ Yes ☐ No
 Installation Type\*:

Mount\*:
 Panel Configuration\*:

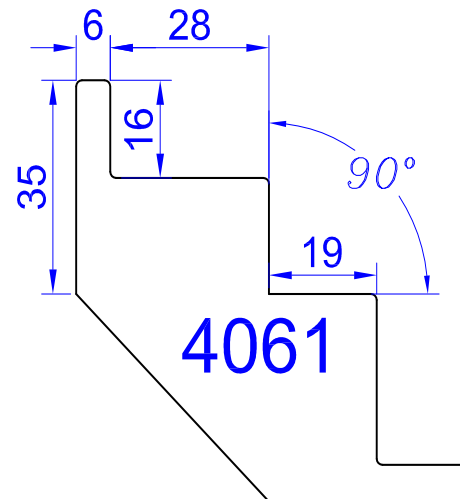
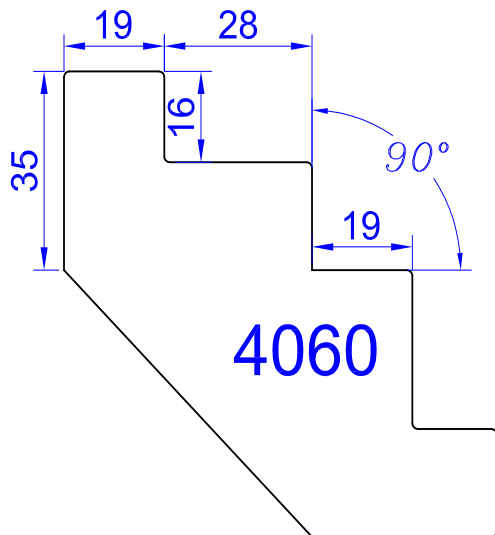
Split Rotation Height (If Required):
 French Door Cut-out:

Frame Options\*:
 - select here -
 3 Sided
 4 Sided Frame
 Sill Plate On Bottom
 Sill Plate On Left
 Sill Plate On Right
 Sill Plate On Top

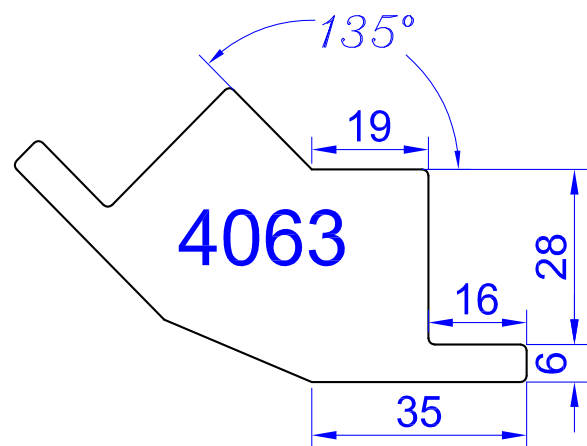
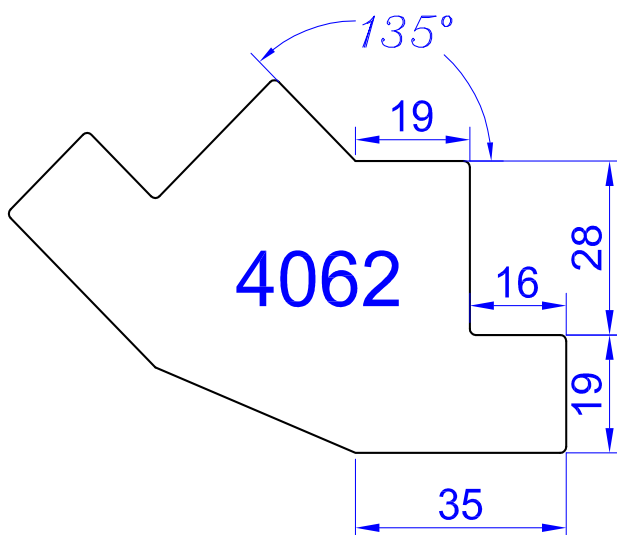
Special Instructions:
 Extras:
 Notes:
 Needs Drawing: ☐
 Upload Drawing/Image: Choose File No file chosen

# HINGED SHUTTERS IN BAY OR CORNER WINDOW: AVAILABLE IN HINGED L OR Z FRAMES

## CORNER POSTS



## BAY POSTS



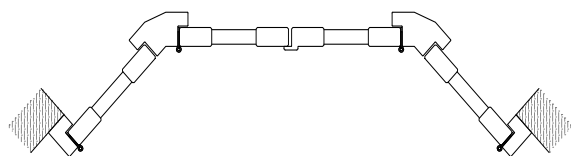
Follow instructions for Hinged in L Frame or Hinged in Z Frame

Make sure Corner Angle is 90 degrees

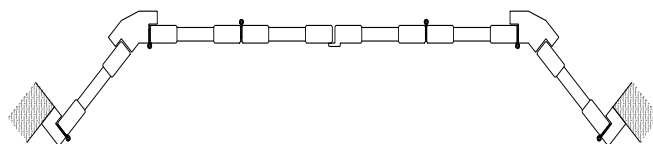
Make sure Bay Angle is 135 degrees (If not 135 degrees, custom bay post will be needed)

# PANEL CONFIGURATION EXAMPLES

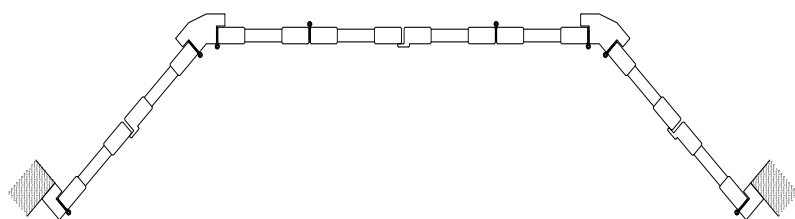
4 panel, Configuration code: LBL-DRBR



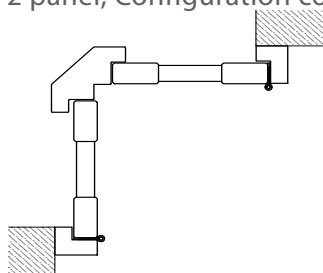
6 panel, Configuration code: LBLL-DRRBR



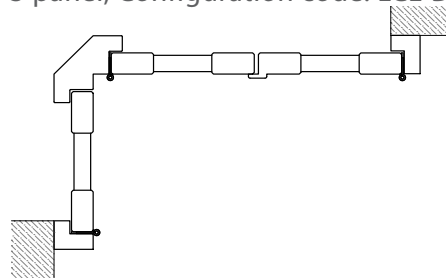
8 panel, Configuration code: L-DRBLL-DRRBL-DR



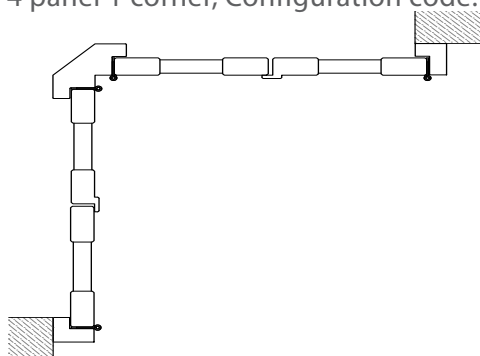
2 panel, Configuration code: LCR



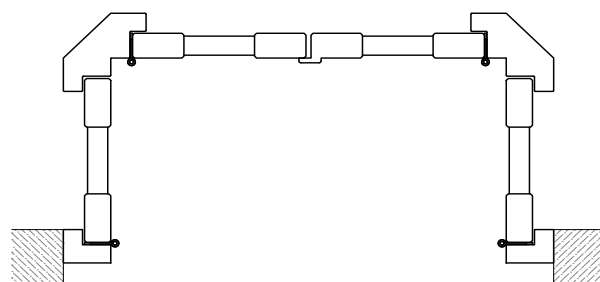
3 panel, Configuration code: LCL-DR or LD-RCR



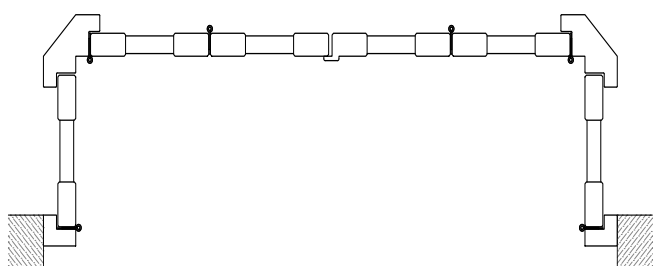
4 panel 1 corner, Configuration code: LD-RCL-DR



4 panel 2 corners, Configuration code: LCL-DRCR



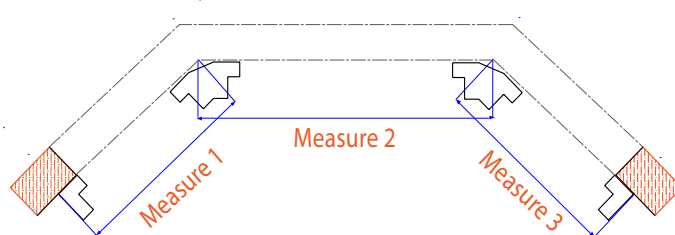
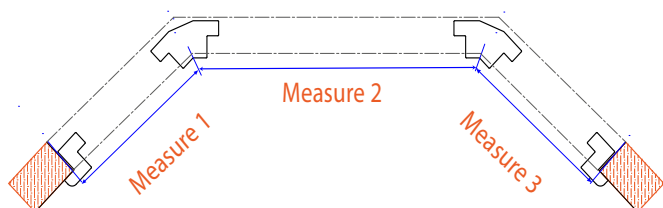
6 panel 2 corner, Configuration code: LD-RCL-DRCL-DR or LCLL-DRRCR



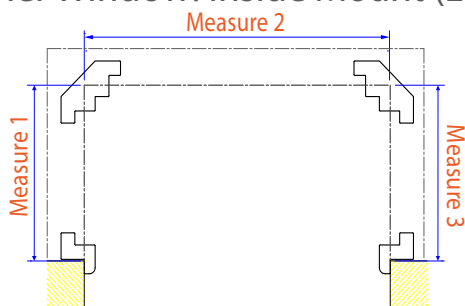
Take your measurements

Bay Window: Outside Mount (L or Z)

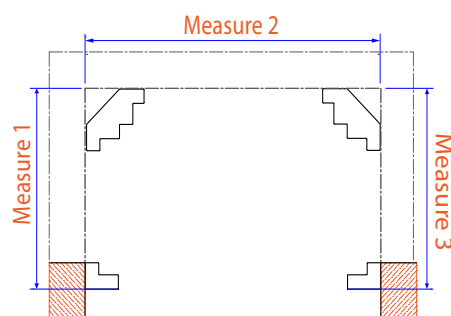
## Bay Window: Inside Mount (L or Z)



## Corner Window: Inside Mount (L or Z)

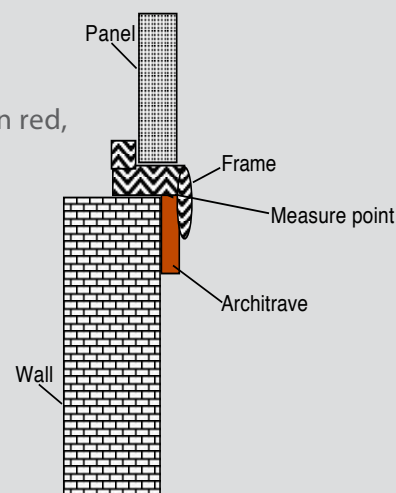
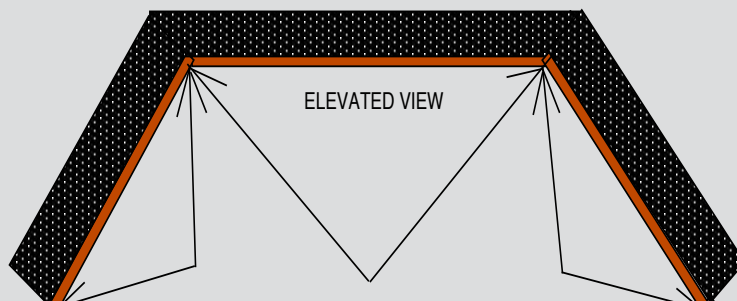


## Corner Window: Outside Mount (L Only)



## QUIRKS: USING A Z FRAME

In both Bay and Corner windows where there is an architrave as highlighted below in red, the measurements must be taken from the inside outer edge of the opening.



**IMPORTANT NOTE:** When placing your order online always work from left to right of the opening.  
 Sub-Width 1 = Measure 1. Sub-Width 2 = Measure 1 + Measure 2  
 Measure 3 is the total width i.e Measure 1 + Measure 2 + Measure 3

No. 1: SQM: 0.0000

Product*: HP Painted	Color*: - select here -	Split Rotation Height (If Required)	Special Instructions
Location: - select here -	Blade*: - select here -		
Width*: Measure 1+2+3	Tilt Rod*: - select here -	French Door Cut-out	Extras
Height*: Enter Height	Stiles*: - select here -		Notes
Mid-Rail Height	Installation Method*: - select here -		Needs Drawing
Uneven Panel Widths: Yes No	Installation Type*: - select here -		Upload Drawing/Image
Sub Widths: Measure 1	Mount*: - select here -		Choose File No file chosen
Measure 1+2	Panel Configuration*: - select here -		

Use C/B to denote corner posts in your panel configuration

# INSTALLATION METHOD: HINGED NO FRAME USED WHEN FRAMES ARE NOT WANTED.



## BEFORE YOU ORDER

### MINIMUM REVEAL DEPTHS\*

\*Be sure to always measure from the most protruding object in the reveal.

	64mm Blade		89mm Blade		114mm Blade	
	Clearview	Center	Clearview	Center	Clearview	Center
Hinged No Frame	54	47	67	60	79	72

## LIMITATIONS

Finish	Installation Method	Width			Height			Panel Breaks			
		Min	Max	Max Non Warranty	Min	Max	Max Non Warranty	Mid-Rail(s) Required	Approxiate Split Rotation by Blade Size		
									64	89	114
Painted	Hinged No Frame	200	1050	1200	400	3000	N/A	1800, 2700	1100	1300	1200
	Double Hinged	200	600	700	400	3000	N/A	1800, 2700	1100	1300	1200
Stained	Hinged No Frame	200	850	900	400	3000	N/A	1800, 2700	1100	1300	1200
	Double Hinged	200	550	600	400	3000	N/A	1800, 2700	1100	1300	1200

## DEDUCTIONS

Panel and Reveal	Between Meeting Panels	Between Meeting Panels with D Mould	Hinge Deductions	Overall Panel Deduction for Non-Mortise Hinged	Overall Panel Deduction for L Hinge	Overall Panel Deduction for Pivot Hinge
2.5	2.5	5	2.5	5	6	5

## HOW TO MEASURE AND ORDER HINGED NO FRAME

NON MORTISE HINGED  
REVEAL MOUNT ONLY.

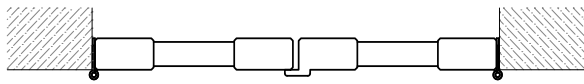


## PANEL CONFIGURATION EXAMPLES

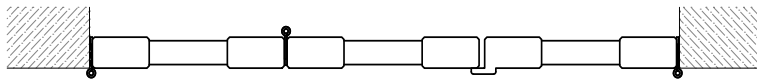
1 panel Configuration code: L or R



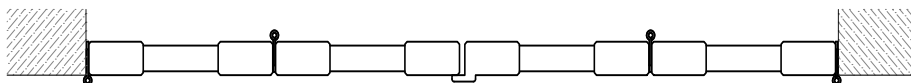
2 panel, Configuration code: L-DR or LD-R



3 panel, Configuration code: LL-DR or LD-RR

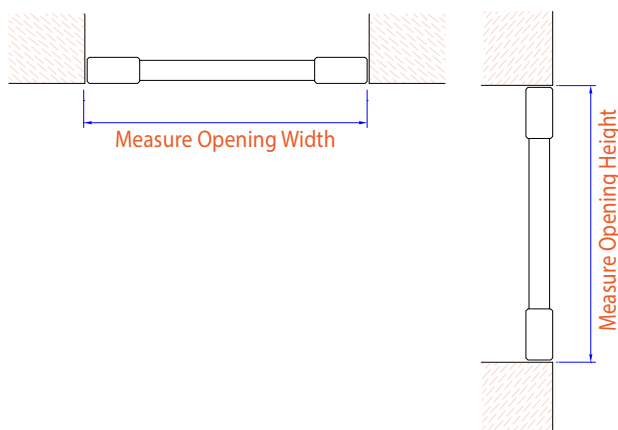


4 panel, Configuration code: LL-DRR or LLD-RR



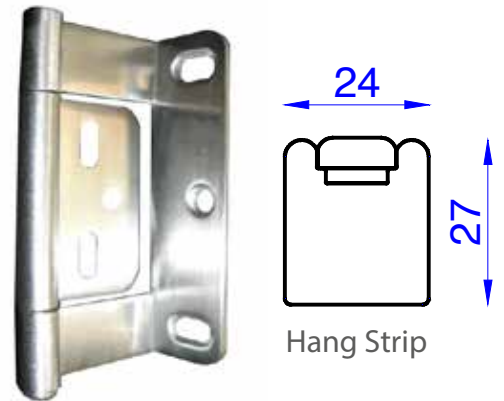
## HOW TO MEASURE

Hinged No Frame





## HOW TO MEASURE AND ORDER HINGED NO FRAME

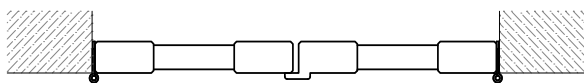
L HINGE AND HANG STRIP  
REVEAL MOUNT ONLY.

## PANEL CONFIGURATION EXAMPLES

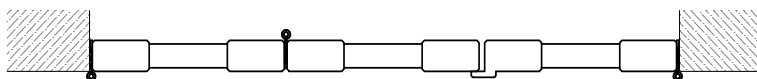
1 panel Configuration code: L or R



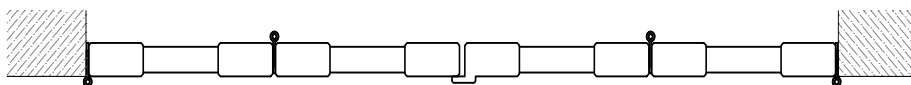
2 panel, Configuration code: L-DR or LD-R



3 panel, Configuration code: LL-DR or LD-RR

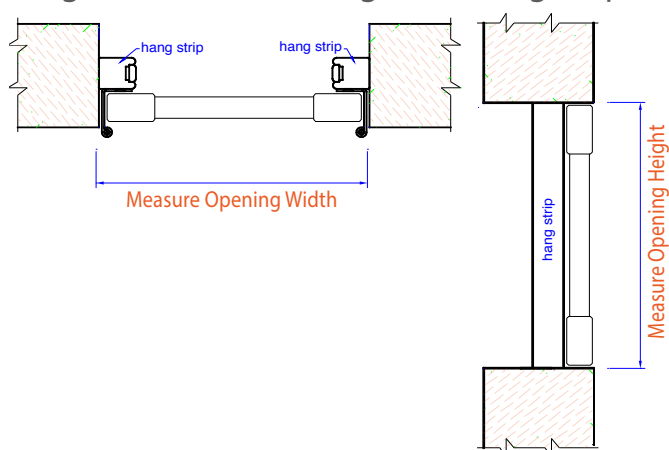


4 panel, Configuration code: LL-DRR or LLD-RR

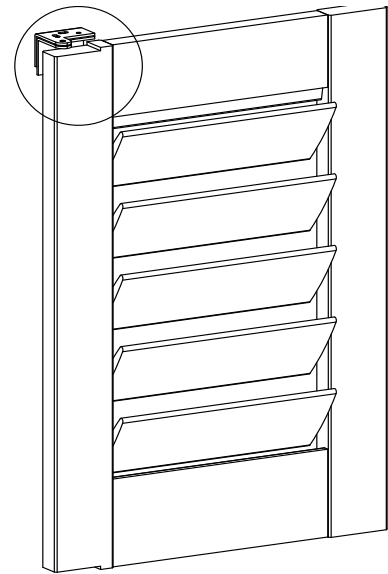
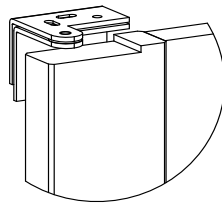


## HOW TO MEASURE

Hinged No Frame: L Hinge and Hang Strip



## HOW TO MEASURE AND ORDER HINGED NO FRAME

PIVOT HINGE  
REVEAL AND FACE MOUNT

## PANEL CONFIGURATION EXAMPLES

Pivot Hinge	Mount	Rebate (mm)	Rebate Width (mm)
Recessed Pivot Hinge	Inside	3.5	55

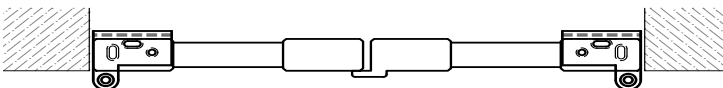
Note: Non-recessed pivot hinges will have no rebate.

The pivot hinge will be moved across 10mm as standard if the panel is in the centre of the opening and will butt up against another panel with a D mould.

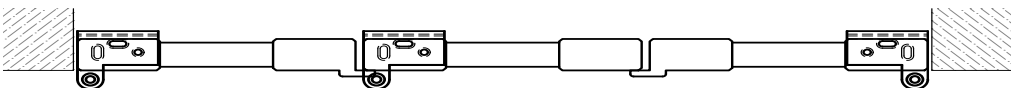
1 panel Configuration code: L or R



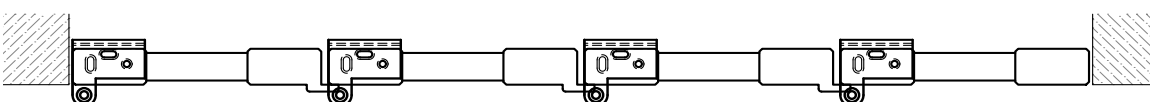
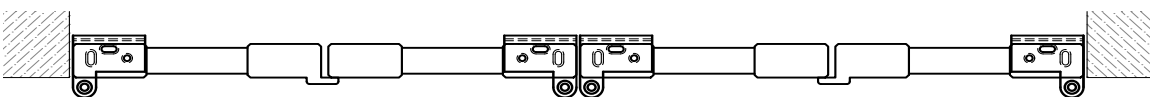
2 panel, Configuration code: L-DR or LD-R

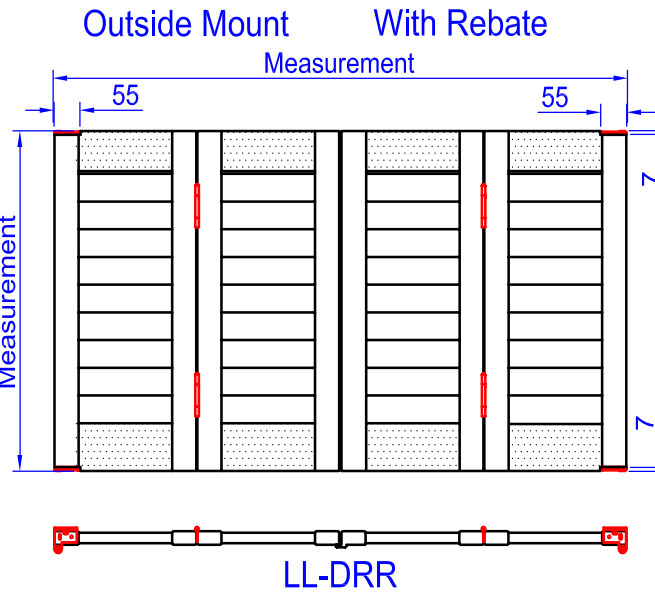
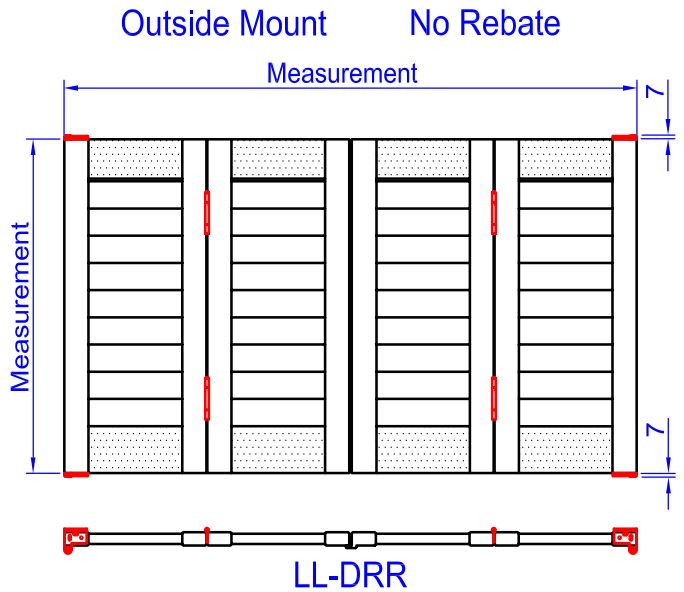
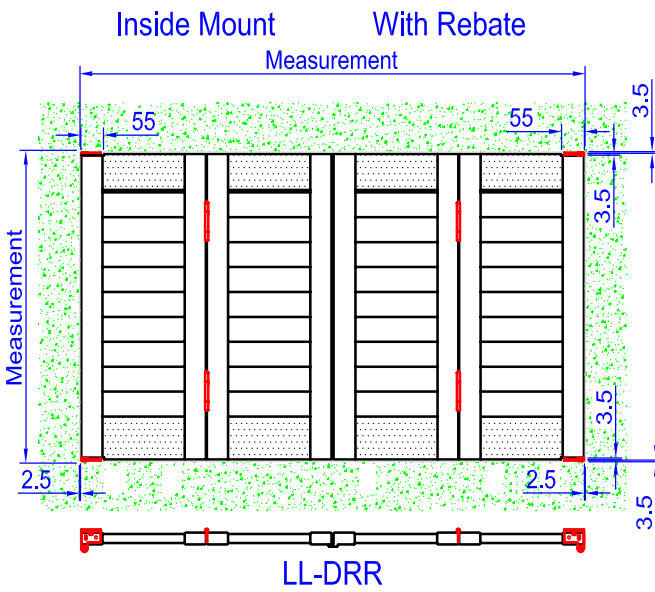
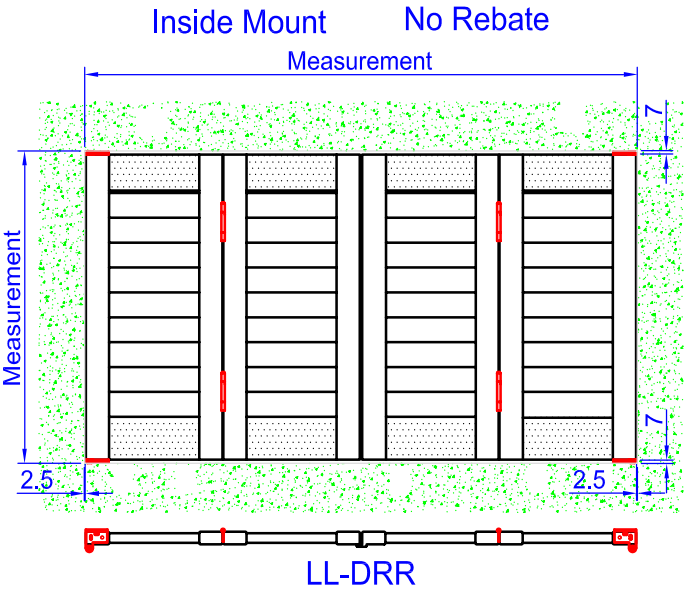


3 panel, Configuration code: LD-L-DR or LD-R-DR or LD-LD-L or R-DR-DR



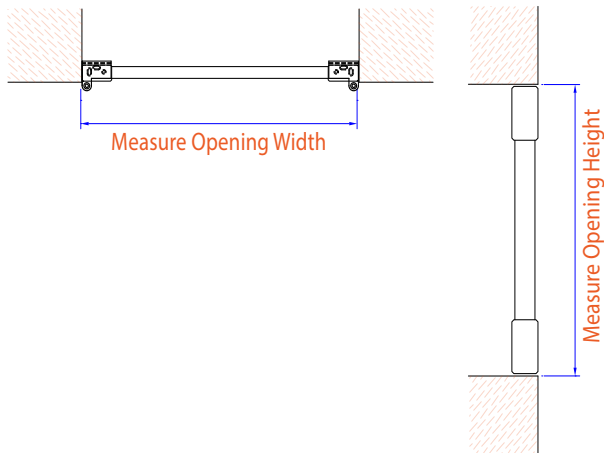
4 panel, Configuration code: LD-RL-DR or LD-LD-LD-L or R-DR-DR-DR



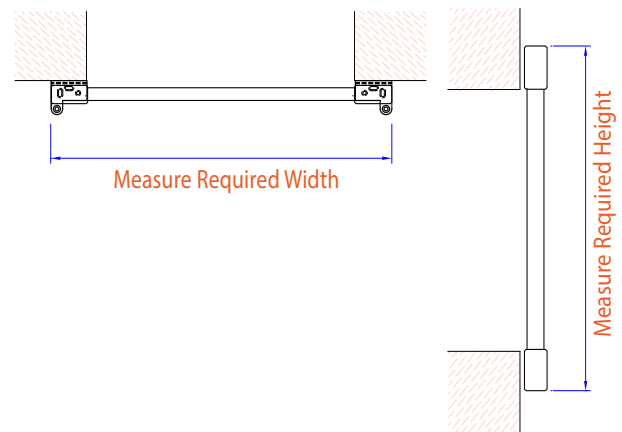


# HOW TO MEASURE

Hinged No Frame: Pivot Hinged



Hinged No Frame: Pivot Hinged



## HOW TO ORDER HINGED NO FRAME: ALL OPTIONS.

No. 1: SQM: 0.0000

<b>Product*</b> : HP Painted <b>Location</b> : - select here - <b>Width*</b> : Enter Width <b>Height*</b> : Enter Height <b>Mid-Rail Height</b> : <b>Uneven Panel Widths</b> : <input type="radio"/> Yes <input checked="" type="radio"/> No	<b>Color*</b> : - select here - <b>Blade*</b> : - select here - <b>Tilt Rod*</b> : - select here - <b>Stiles*</b> : - select here - <b>Installation Method*</b> : Hinged No Frame <b>Installation Type*</b> : <b>Mount*</b> : <b>Panel Configuration*</b> : - select here -	<b>Split Rotation Height (If Required)</b> : <b>French Door Cut-out</b>	<b>Special Instructions</b> <b>Extras</b> <b>Notes</b> : <b>Needs Drawing</b> <input type="checkbox"/> <b>Upload Drawing/Image</b> No file chosen
---	--	--	---

# INSTALLATION METHOD: FIXED

USED WHEN SHUTTERS ARE REQUIRED TO BE FIXED IN POSITION. **REVEAL MOUNT ONLY**



## BEFORE YOU ORDER

### MINIMUM REVEAL DEPTHS\*

\*Be sure to always measure from the most protruding object in the reveal.

	64mm Blade		89mm Blade		114mm Blade	
	Clearview	Center	Clearview	Center	Clearview	Center
Fixed	54	47	67	60	79	72

## LIMITATIONS

Finish	Installation Method	Width			Height			Panel Breaks			
		Min	Max	Max Non Warranty	Min	Max	Max Non Warranty	Mid-Rail(s) Required	Approximate Split Rotation by Blade Size		
									64	89	114
Painted	Fixed	200	1050	1200	400	3000	N/A	1800, 2700	1100	1300	1200
Stained		200	850	900	400	3000	N/A	1800, 2700	1100	1300	1200

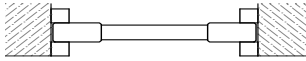
## DEDUCTIONS

Fixed Panel and Reveal	Between Meeting Panels	Overall Panel Deduction
2.5	2.5	5

## HOW TO MEASURE AND ORDER FIXED WITH BEADING USED WHEN ONLY BLADES NEED TO BE OPERATIONAL

### PANEL CONFIGURATION EXAMPLES

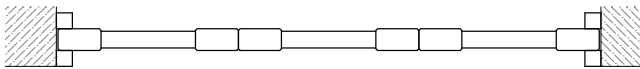
1 panel Configuration code: F



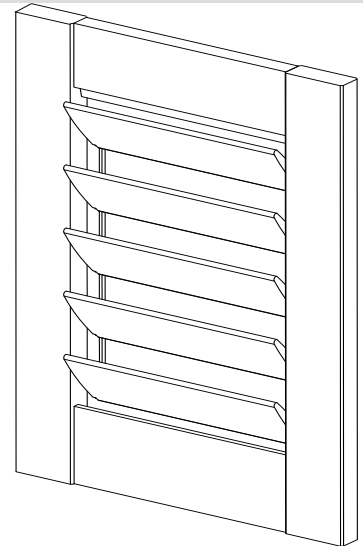
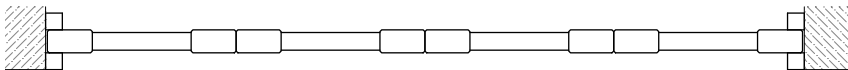
2 panel, Configuration code: FF



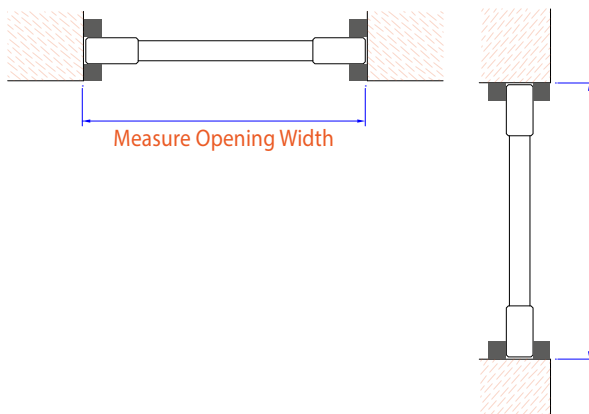
3 panel, Configuration code: FFF



4 panel, Configuration code: FFFF



### HOW TO MEASURE



### HOW TO ORDER

No. 1: SQM: 0.0000

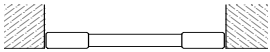
Product*: HP Painted	Color*: - select here -	Split Rotation Height (If Required)	Special Instructions
Location: - select here -	Blade*: - select here -		
Width*: Enter Width	Tilt Rod*: - select here -	French Door Cut-out	Notes
Height*: Enter Height	Stiles*: - select here -		
Mid-Rail Height	Installation Method*: Fixed Panel		Needs Drawing <input type="checkbox"/>
Uneven Panel Widths <input type="radio"/> Yes <input checked="" type="radio"/> No	Installation Type*: 19x19 Beading		Upload Drawing/Image <a href="#">Choose File</a> No file chosen
	Mount*: Bullet Magnets		
	Panel Configuration*: - select here -		

## HOW TO MEASURE AND ORDER FIXED WITH BULLET MAGNETS

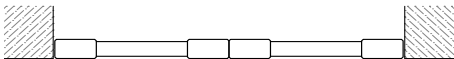
USED WHEN SHUTTERS ARE FIXED IN POSITION, BUT THE PANEL IS STILL ABLE TO BE REMOVED.

### PANEL CONFIGURATION EXAMPLES

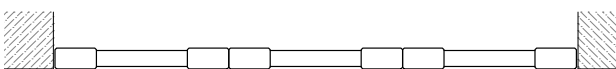
1 panel Configuration code: F



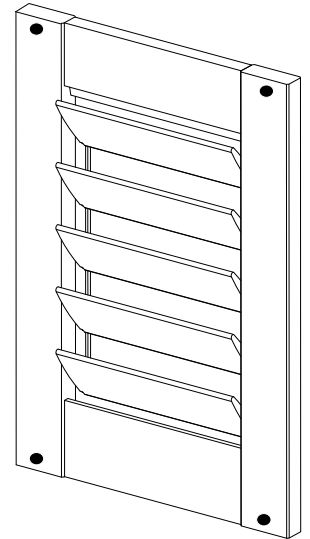
2 panel, Configuration code: FF



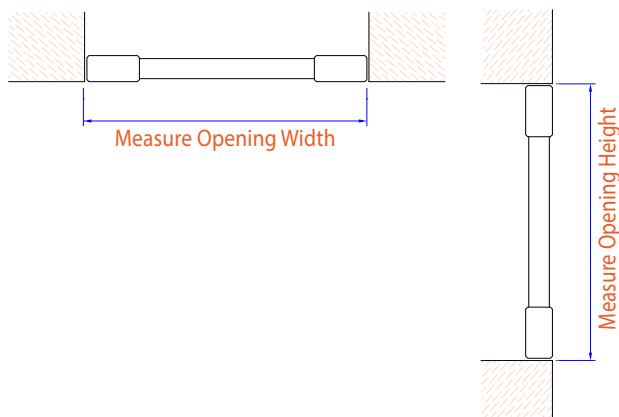
3 panel, Configuration code: FFF



4 panel, Configuration code: FFFF



### HOW TO MEASURE



### HOW TO ORDER

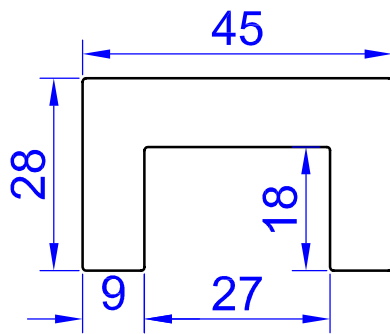
No. 1: SQM: 0.0000

Product*: HP Painted	Color*: - select here -	Split Rotation Height (If Required)	Special Instructions
Location: - select here -	Blade*: - select here -		
Width*: Enter Width	Tilt Rod*: - select here -	French Door Cut-out	Notes
Height*: Enter Height	Stiles*: - select here -		Needs Drawing <input type="checkbox"/>
Mid-Rail Height	Installation Method*: Fixed Panel		Upload Drawing/Image <input type="button" value="Choose File"/> No file chosen
Uneven Panel Widths <input type="radio"/> Yes <input checked="" type="radio"/> No	Installation Type*: 19x19 Beading Bullet Magnets Panel Only		
	Mount*: - select here -		
	Panel Configuration*: - select here -		

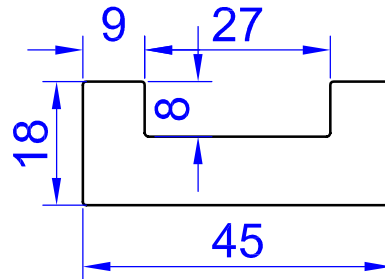


## HOW TO MEASURE AND ORDER FIXED WITH U CHANNEL

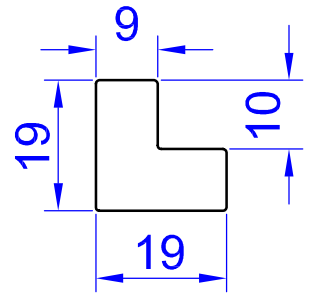
USED WHEN SHUTTERS ARE FIXED IN POSITION, THE PANEL IS NOT ABLE TO BE REMOVED.



TOP CHANNEL (4050)



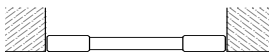
BOTTOM CHANNEL (4051)



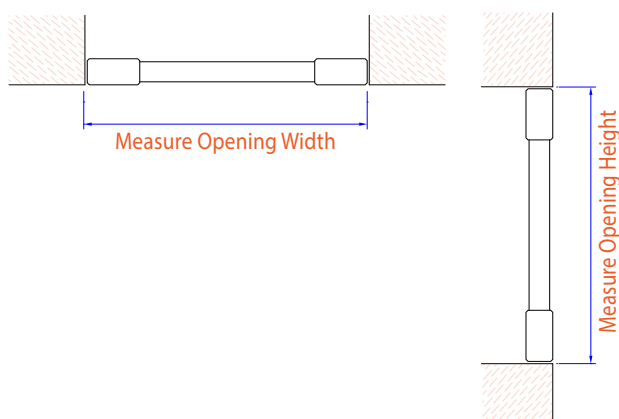
SIDE CHANNEL (4052)

## PANEL CONFIGURATION EXAMPLES

1 panel Configuration code: F



## HOW TO MEASURE



# INSTALLATION METHOD: MULTI-FOLD

USED TO COMPLETELY FOLD SHUTTERS AWAY FROM OPENING WHEN AN UNOBSTRUCTED VIEW IS REQUIRED. REVEAL AND FACE MOUNT APPLICATIONS. MAX 4 PANELS EACH WAY IN WARRANTY. ADDITIONAL PANELS WILL NOT BE WARRANTIED.



## BEFORE YOU ORDER

### MINIMUM REVEAL DEPTHS\*

\*Be sure to always measure from the most protruding object in the reveal.

	64mm Blade		89mm Blade		114mm Blade	
	Clearview	Center	Clearview	Center	Clearview	Center
Multi-Fold	100	100	100	100	100	100

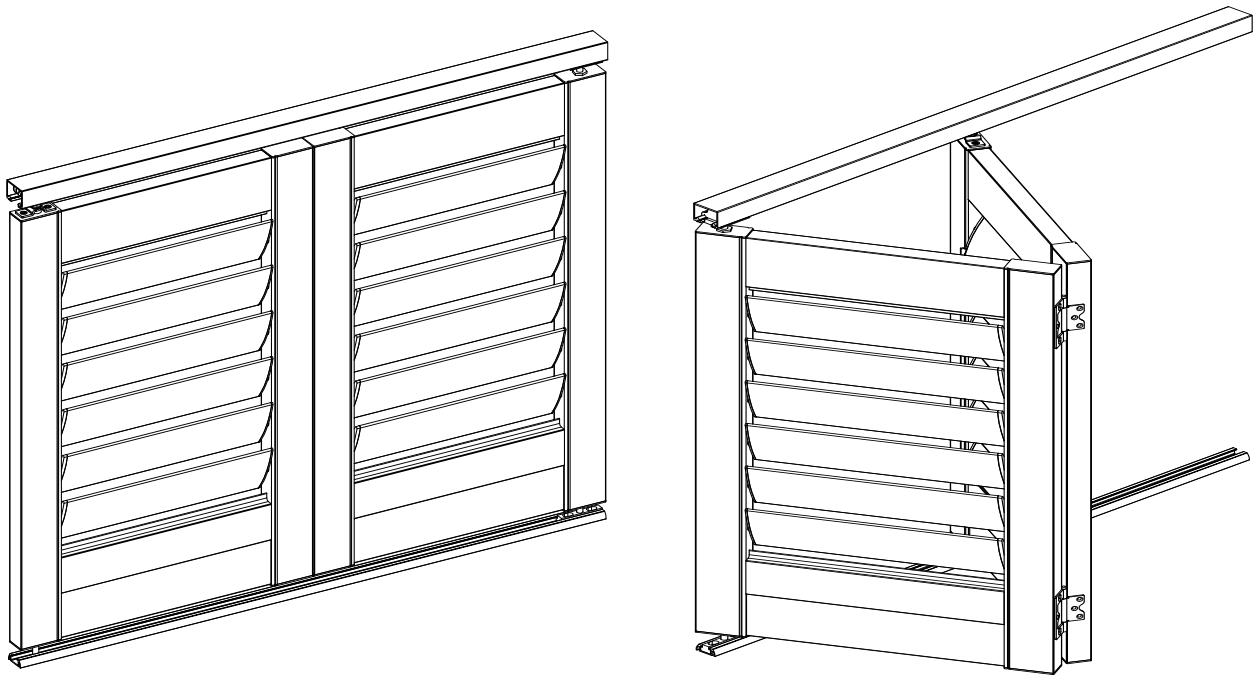
## LIMITATIONS

Finish	Installation Method	Width			Height			Panel Breaks			
		Min	Max	Max Non Warranty	Min	Max	Max Non Warranty	Mid-Rail(s) Required	Approximate Split Rotation by Blade Size		
									64	89	114
Painted	Multi-Fold	200	600	700	400	3000	N/A	1800, 2700	1100	1300	1200
Stained		200	550	600	400	3000	N/A	1800, 2700	1100	1300	1200

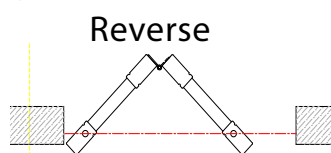
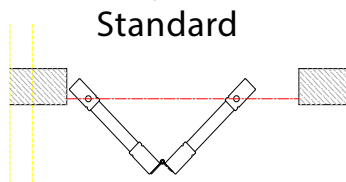
## DEDUCTIONS

Top Track	Bottom Track	Bottom Track Recessed	Bottom Multi-Fold Pivot Height	Bottom Multi-Fold Pivot Width	Bottom Multi-Fold No Track
52	20	28	20	5	20

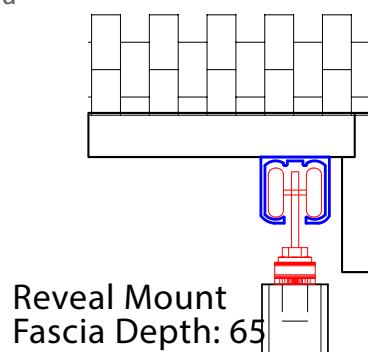
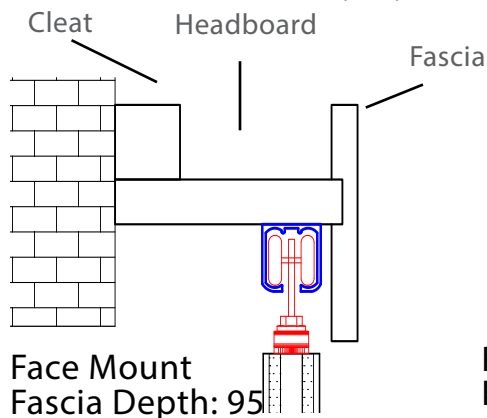
## HOW TO MEASURE AND ORDER MULTI-FOLD



Installation Type: Choose the folding pattern of the panels, either Standard Fold or Reverse Fold.



Mount: Select either Face (Out) or Reveal (In)

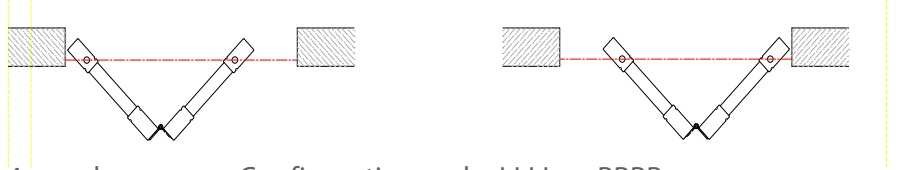


Warranty Note: The maximum number of panels folding in one direction is four.

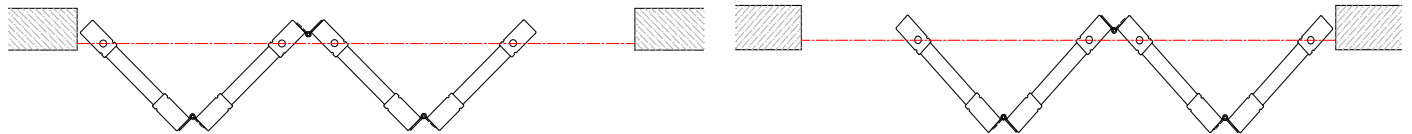
Panel configurations are to be an even numbers and move in pairs. This ensures that each panel is able to be secured in the opening.

# PANEL CONFIGURATION EXAMPLES

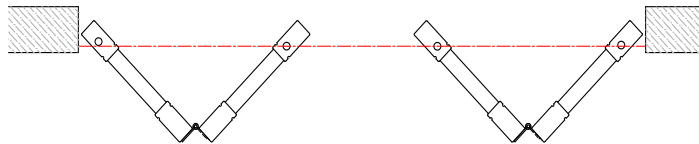
2 panel, Configuration code: LL or RR



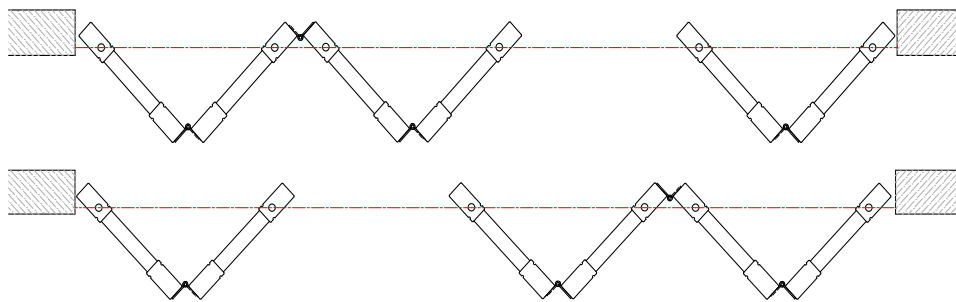
4 panels one way, Configuration code: LLLL or RRRR



4 panels centre open, Configuration code: LLRR



6 panels centre open, Configuration code: LLRRRR or LLLLRR



Choose the Pelmet/Track Type:

A: Pelmet with Tracks

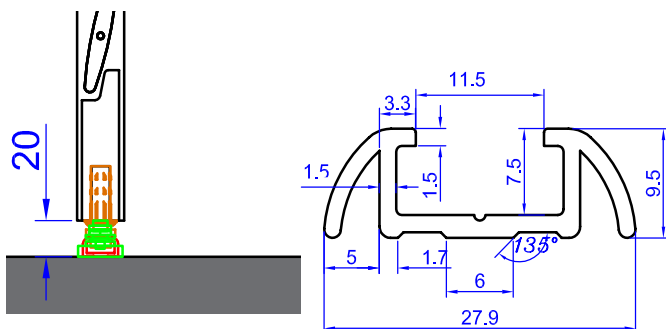
B: Tracks Only

Choose Bottom Track Type

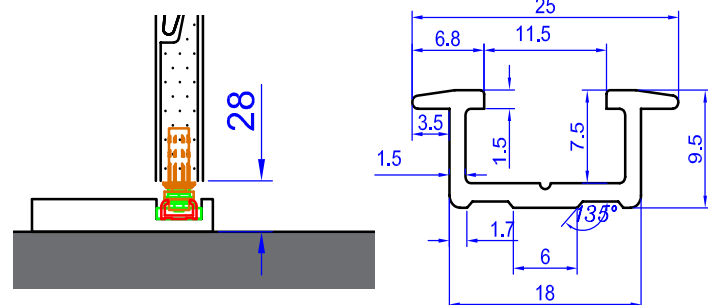
A. Surface Mount Track - Bottom track with no bottomboard

B. Recessed Track - Track recessed into bottomboard

C. No Bottom Track - The Window Outfitters strongly advises against this option and it will be a non-warranty item.



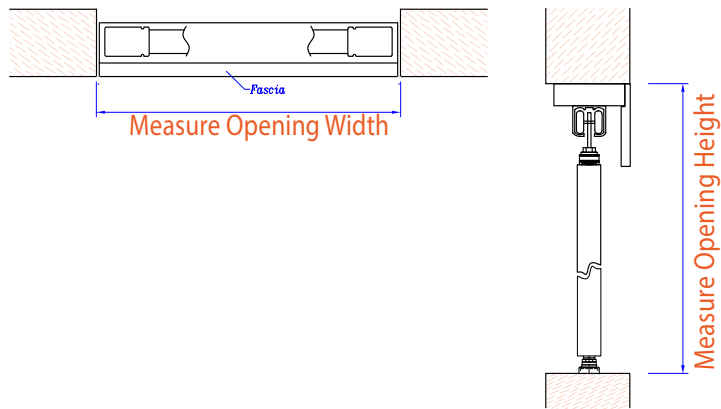
Surface Mount Track



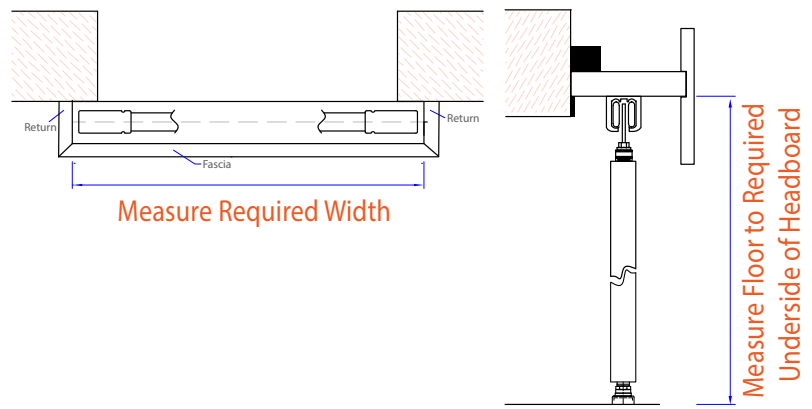
Recessed Track

# HOW TO MEASURE

## Multi-Fold: Reveal Mount



## Multi-Fold: Face Mount

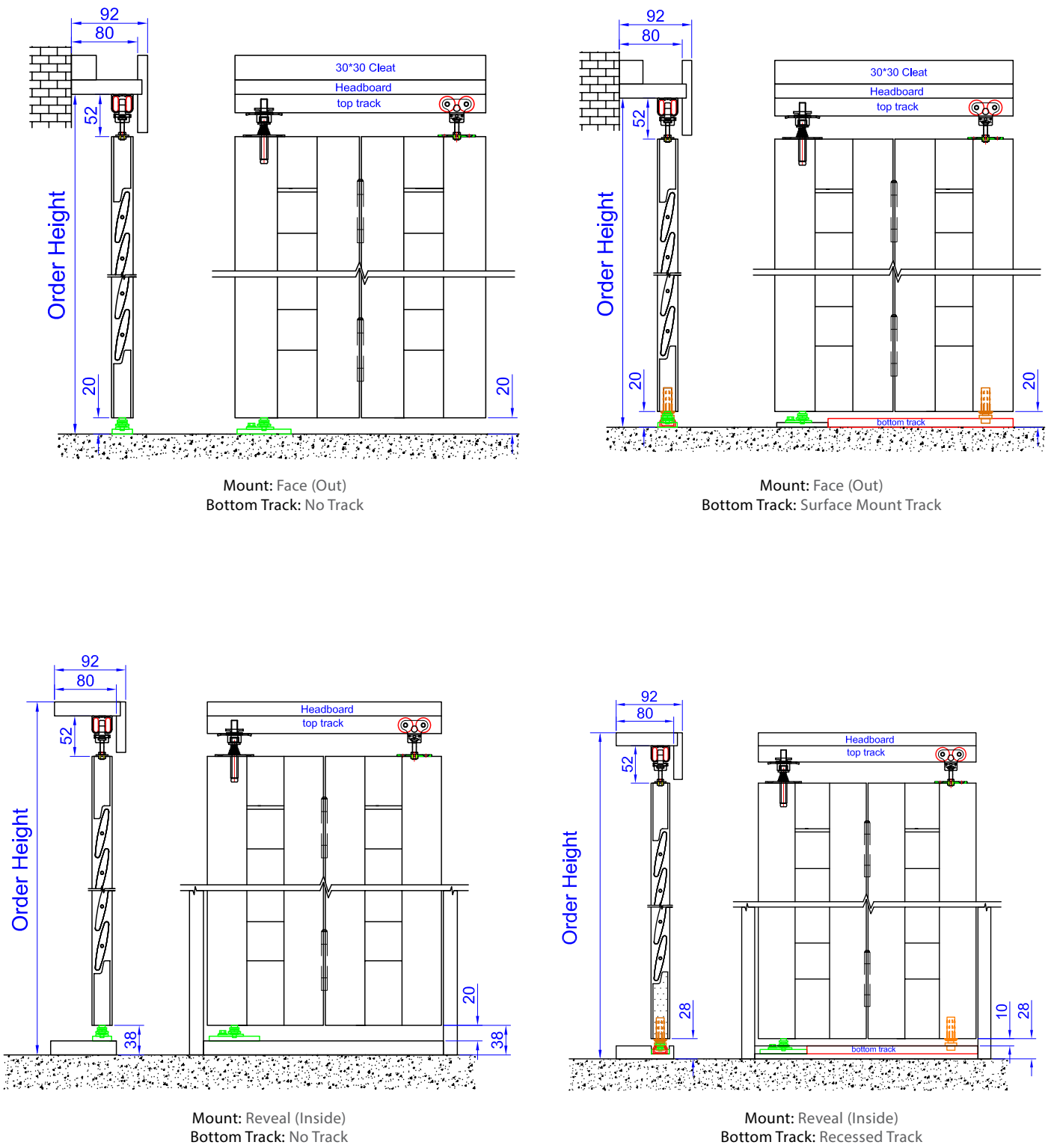


Component	Measurements
Headboard	80 x 18
Head Mounting Cleat	30 x 30
Outside Mount Fascia & Returns	95 x 12
Inside Mount Fascia & Returns	65 x 12
Sideboards	80 x 18
Side Mounting Cleat	19 x 19
Bottom Board	100 x 18

# HOW TO ORDER

<b>Product*</b> : HP Painted <b>Location</b> : <b>Width*</b> : Enter Width <b>Height*</b> : Enter Height <b>Mid-Rail Height</b> : <input checked="" type="checkbox"/> No <input type="checkbox"/> Yes	<b>Color*</b> : - select here - <b>Blade*</b> : - select here - <b>Tilt Rod*</b> : - select here - <b>Stiles*</b> : - select here - <b>Installation Method*</b> : Multi-Fold <b>Installation Type*</b> : <input checked="" type="checkbox"/> - select here - Reverse Fold Standard Fold <input type="checkbox"/> - select here - <b>Mount*</b> : <input type="checkbox"/> - select here - <b>Panel Configuration*</b> : - select here -	<b>Split Rotation Height</b> : <b>Pelmet/Tracks*</b> : <input checked="" type="checkbox"/> - select here - Pelmet with Tracks Track(s) Only <b>Bottom Track*</b> : <input checked="" type="checkbox"/> - select here - No Recessed Bottomboard Yes	<b>Special Instructions</b> : <b>Extras</b> : <b>Notes</b> : <b>Needs Drawing</b> : <input checked="" type="radio"/> No <input type="radio"/> Yes <b>Upload Drawing/Image</b> : Choose File No file chosen <b>Using Made2Fit Service</b> :
--	---	---	---

MULTI-FOLD SPECIFICATION DRAWINGS





# INSTALLATION METHOD: SLIDING

USED MOST COMMONLY TO COVER SLIDING DOORS. REVEAL AND FACE MOUNT APPLICATIONS.



## BEFORE YOU ORDER

### MINIMUM REVEAL DEPTHS\*

\*Be sure to always measure from the most protruding object in the reveal.

	64mm Blade		89mm Blade		114mm Blade	
	Clearview	Center	Clearview	Center	Clearview	Center
2 Track Slider - Blades Closed	180	180	180	180	220	220
2 Track Slider - Blades Open	180	180	220	220	N/A	N/A

## LIMITATIONS

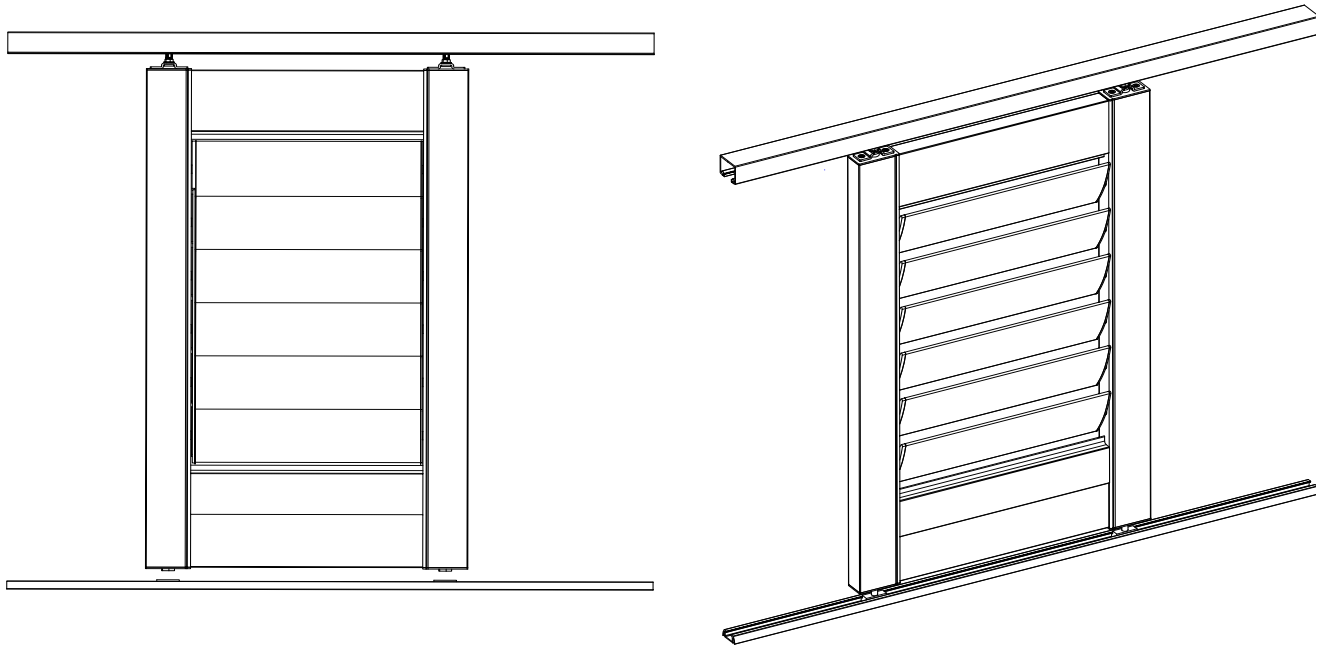
Finish	Installation Method	Width			Height			Panel Breaks			
		Min	Max	Max Non Warranty	Min	Max	Max Non Warranty	Mid-Rail(s) Required	Approximate Split Rotation by Blade Size		
									64	89	114
Painted	Sliding	200	1050	1200	400	3000	N/A	1800, 2700	1100	1300	1200
Stained		200	850	900	400	3000	N/A	1800, 2700	1100	1300	1200

## DEDUCTIONS

Top Track	Surface Mount Track	Bottom Track Sliding with Floor Guide	Bottom Track Recessed
52	20	10	10

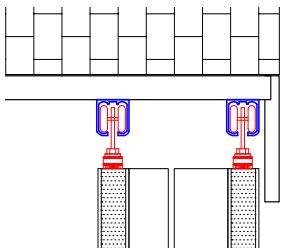


## HOW TO MEASURE AND ORDER SLIDING

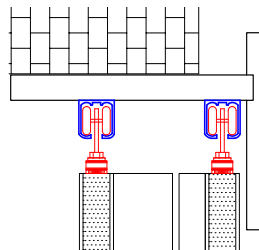


Choose the number of tracks you require: 1 Track, 2 Track(s), or 3 Track(s).

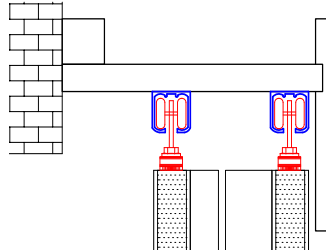
Choose Reveal, Semi-Reveal or Face Mount.



Reveal



Semi-Reveal



Face

**Reveal Mount:** Pelmet is fixed into the opening and the headboard is screwed up into the opening. The fascia will sit flush with the front of the opening and will not have returns.

**Semi-Reveal Mount:** Pelmet is fixed half in the opening and half out of the opening and the headboard is screwed up into the opening. A face mount and returns are supplied. The reveals will stop short of the width of the pelmet and hit the face of the opening.

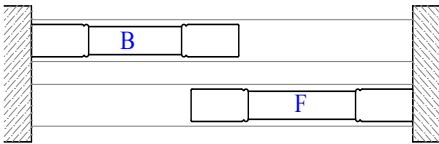
**Face Mount:** Pelmet is fixed on to the outside of the opening, normally above the architrave. The headboard is attached using a 30x30 cleat. Fascia and full length returns are supplied.

## FASCIA DEPTHS:

Reveal	Semi-Reveal	Face
95	140	140

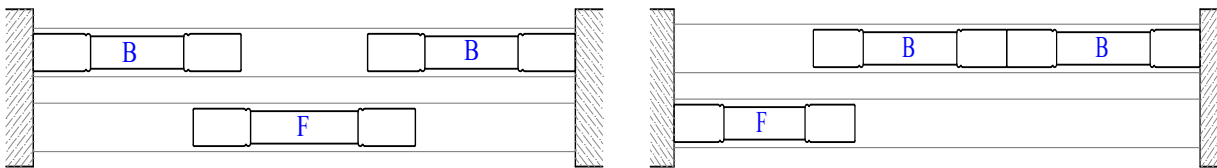
# PANEL CONFIGURATION EXAMPLES

2 panels on 2 tracks, Configuration code: BF or FB

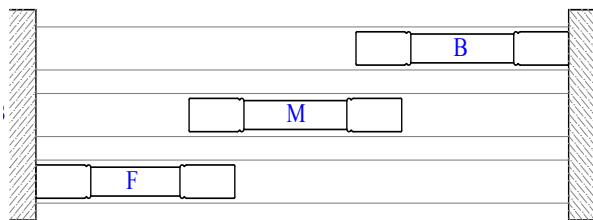


**Note:** Single panels sliding on 1 Track are denoted with a "S" for one panel, and a "SS" for 2 panels on a single track.

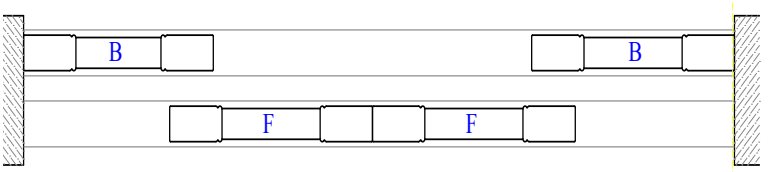
3 panels on 2 tracks, Configuration code: BFB or FBF or FBB or BBF



3 panels on 3 tracks, Configuration code: BMF or FMB  
NOTE: 3 tracks only available with blades closed option



4 panels on 2 tracks, Configuration code: BFFB or FBBF



## JOINED PANELS

Panel configurations **BBFF** and **FFBB** will be supplied as joined panels by default. Please specify in notes if you do not wish the panels to be joined.

Joined panels are two panels that share a center stile allowing them to operate as a single panel. NOTE: Panels are joined with a 41mm flat stile only.

Choose from one of the Pelmet/Track options.

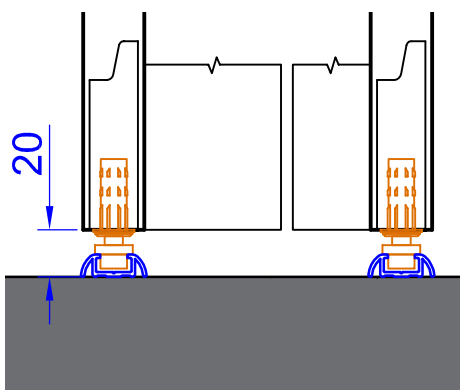
A: Pelmet Sliding Blades Closed. Refer to following drawings to ensure there is sufficient clearance in your opening for the pelmet.

B: Pelmet Sliding Blades Open. Refer to following drawings to ensure there is sufficient clearance in your opening for the pelmet.

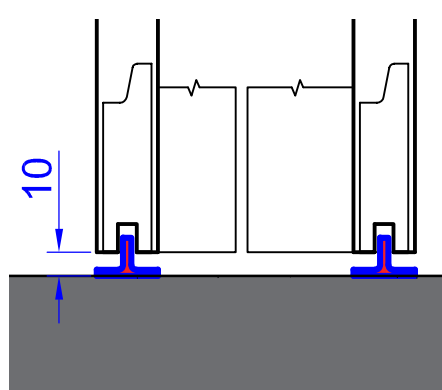
C: Track(s) Only

## Bottom Track Types:

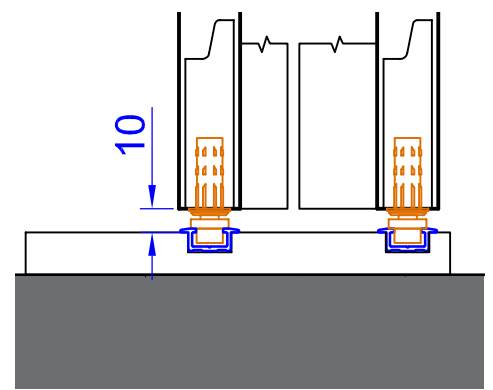
- A. Surface Mount Track - Bottom track with no bottomboard
- B. Guide - No Track or bottomboard required
- C. Recessed Track - Track recessed into bottomboard



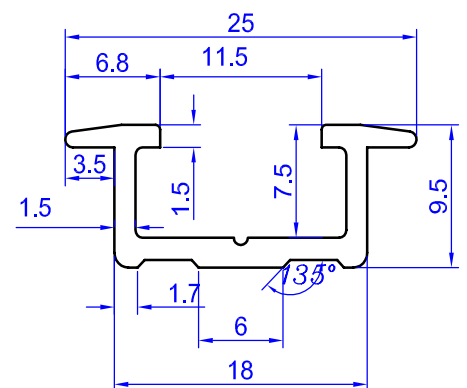
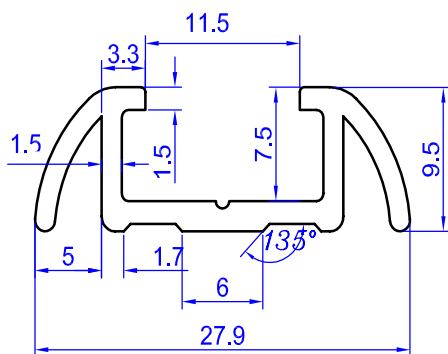
Surface Mount Track



Guide

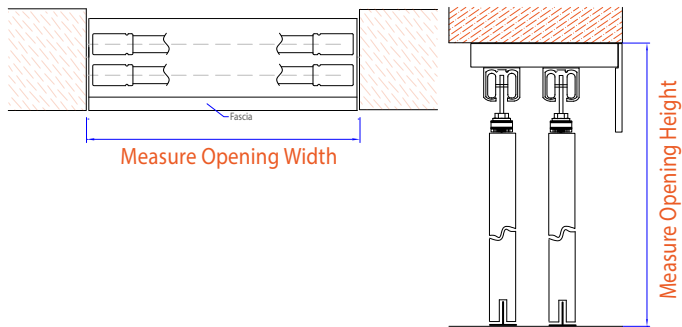


Recessed Track

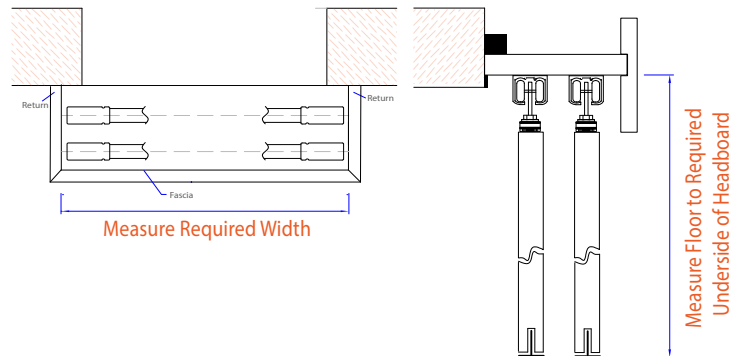


# HOW TO MEASURE

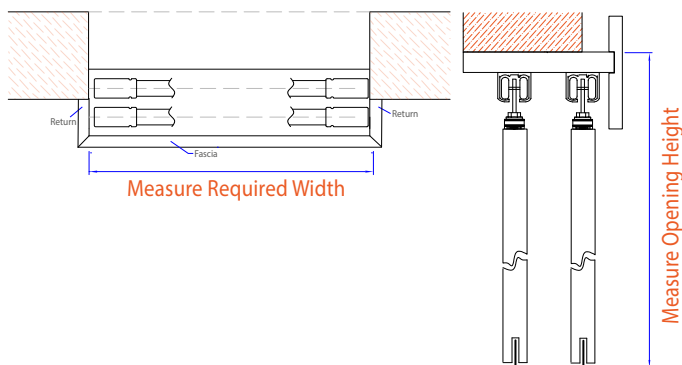
## Sliding: Reveal Mount



## Sliding: Face Mount



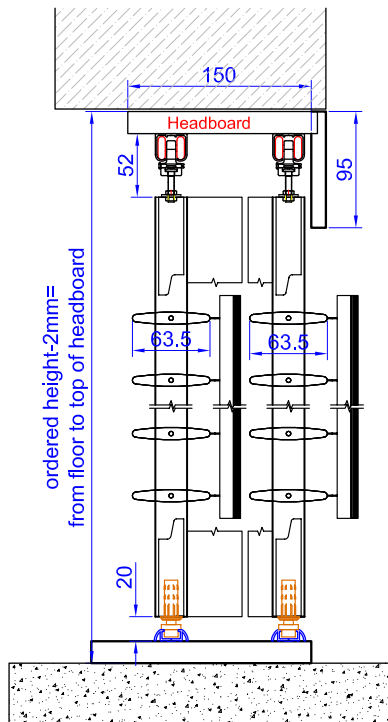
## Sliding: Semi-Reveal Mount



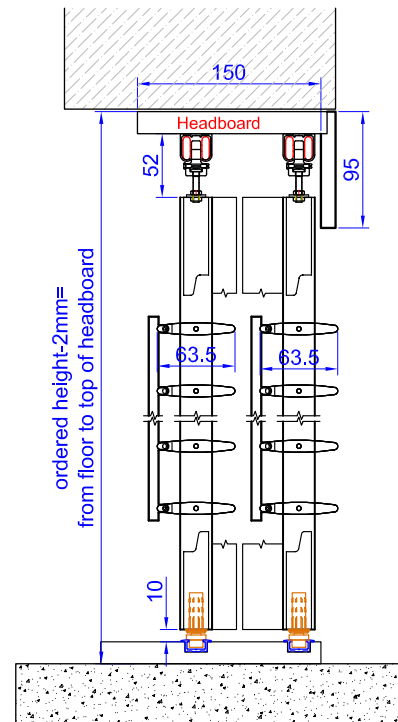
# HOW TO ORDER

<b>Product*</b> : HP Painted <b>Location</b> : <b>Width*</b> : Enter Width <b>Height*</b> : Enter Height <b>Mid-Rail Height</b> : <input type="checkbox"/> Uneven Panel Widths	<b>Color*</b> : - select here - <b>Blade*</b> : - select here - <b>Tilt Rod*</b> : - select here - <b>Stiles*</b> : - select here - <b>Installation Method*</b> : Sliding <b>Installation Type*</b> : <input checked="" type="checkbox"/> - select here - 1 Track 2 Tracks 3 Tracks <b>Mount*</b> : <b>Panel Configuration*</b> : - select here -	<b>Split Rotation Height</b> : <b>Pelmet/Tracks*</b> : <input checked="" type="checkbox"/> - select here - Pelmet Blades Closed Pelmet Blades Open Track(s) Only <b>Sideboards</b> : <b>Bottom Track*</b> : <input checked="" type="checkbox"/> - select here - Guide Recessed Bottomboard Yes	<b>Special Instructions</b> : <b>Extras</b> : <b>Notes</b> : <b>Needs Drawing</b> : <input checked="" type="radio"/> No <input type="radio"/> Yes <b>Upload Drawing/Image</b> : Choose File No file chosen <b>Using Made2Fit Service</b> :
---	--	---	---

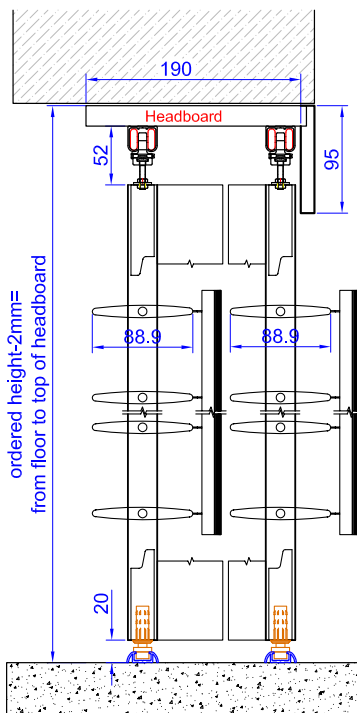
# SLIDING BLADES OPEN, REVEAL MOUNT SPECIFICATION DRAWINGS



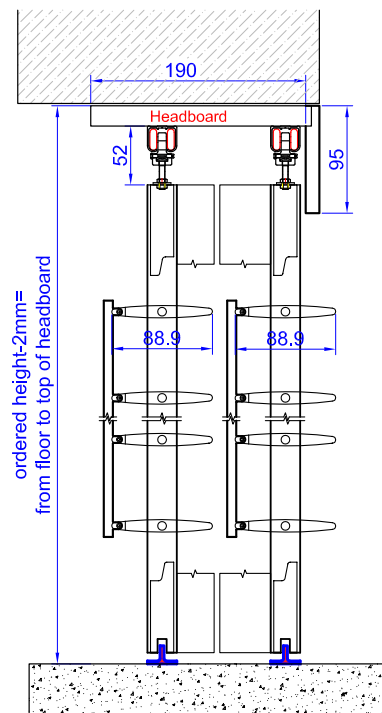
Blade: 64mm Blade  
Tilt Rod: Center Rotation  
Bottom Track: Surface Mount Track



Blade: 64mm Blade  
Tilt Rod: Clearview Rotation  
Bottom Track: Recessed Track

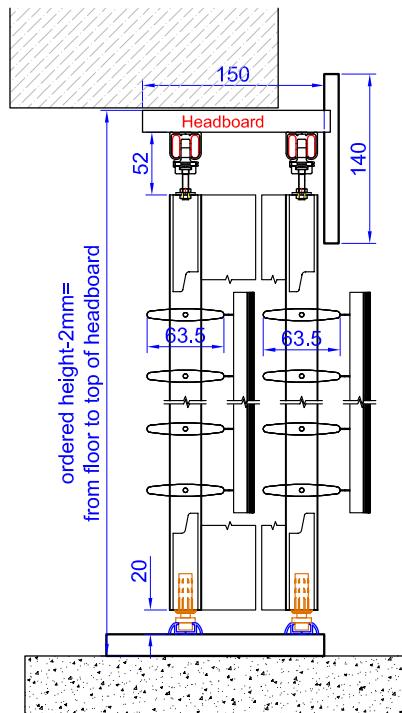


Blade: 89mm Blade  
Tilt Rod: Center Rotation  
Bottom Track: Surface Mount Track

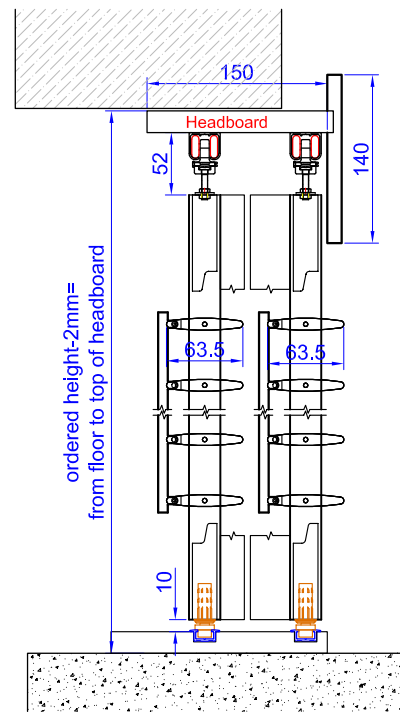


Blade: 89mm Blade  
Tilt Rod: Clearview Rotation  
Bottom Track: No Track, Guide Only

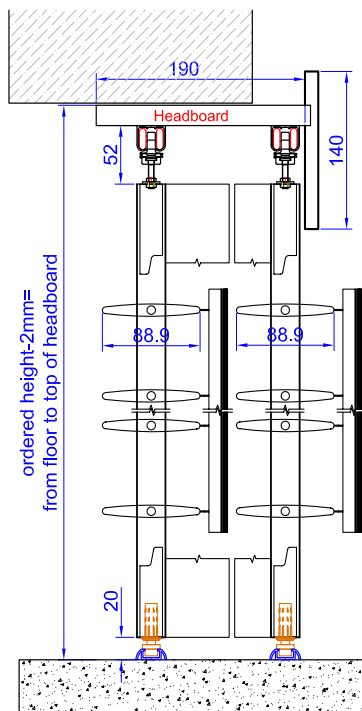
# SLIDING BLADES OPEN, SEMI-REVEAL MOUNT SPECIFICATION DRAWINGS



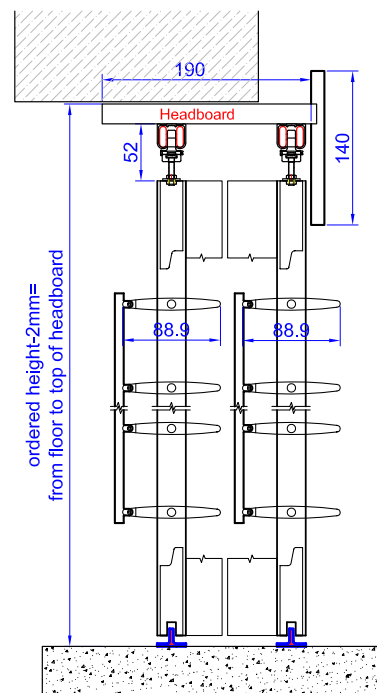
Blade: 64mm Blade  
Tilt Rod: Center Rotation  
Bottom Track: Surface Mount Track



Blade: 64mm Blade  
Tilt Rod: Clearview Rotation  
Bottom Track: Recessed Track

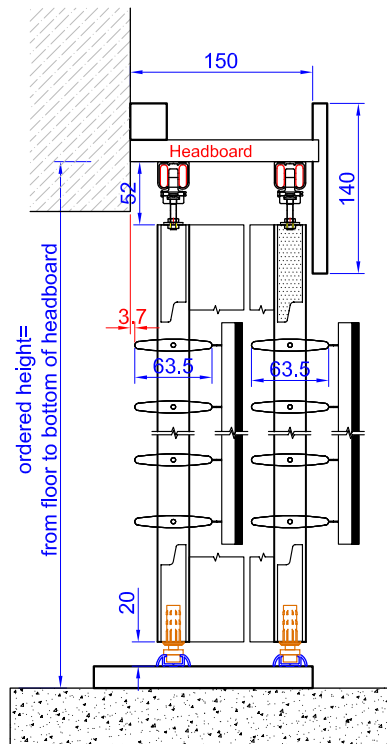


Blade: 89mm Blade  
Tilt Rod: Center Rotation  
Bottom Track: Surface Mount Track

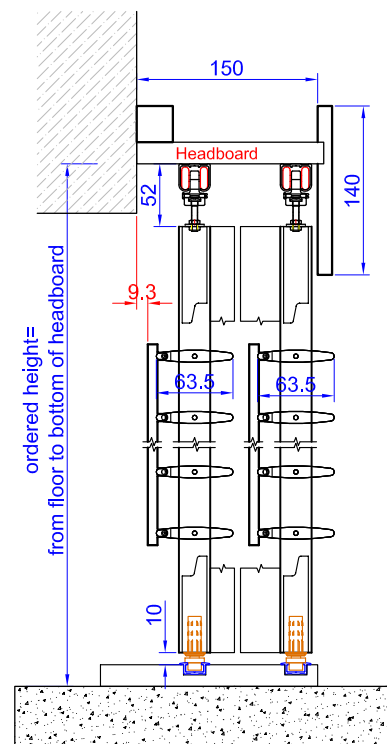


Blade: 89mm Blade  
Tilt Rod: Clearview Rotation  
Bottom Track: No Track, Guide Only

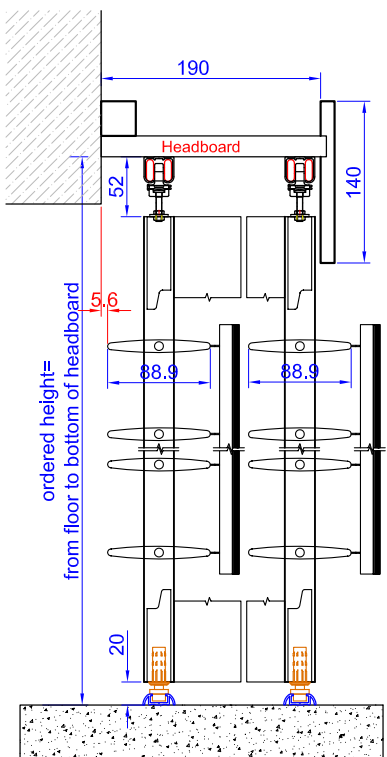
# SLIDING BLADES OPEN, FACE MOUNT SPECIFICATION DRAWINGS



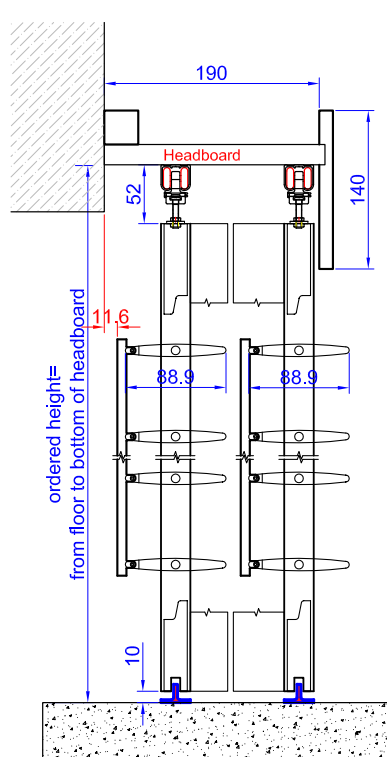
Blade: 64mm Blade  
Tilt Rod: Center Rotation  
Bottom Track: Surface Mount Track



Blade: 64mm Blade  
Tilt Rod: Clearview Rotation  
Bottom Track: Recessed Track

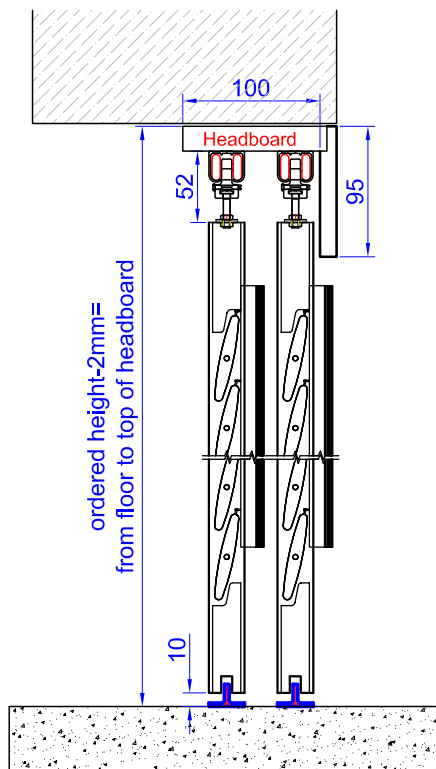


Blade: 89mm Blade  
Tilt Rod: Center Rotation  
Bottom Track: Surface Mount Track

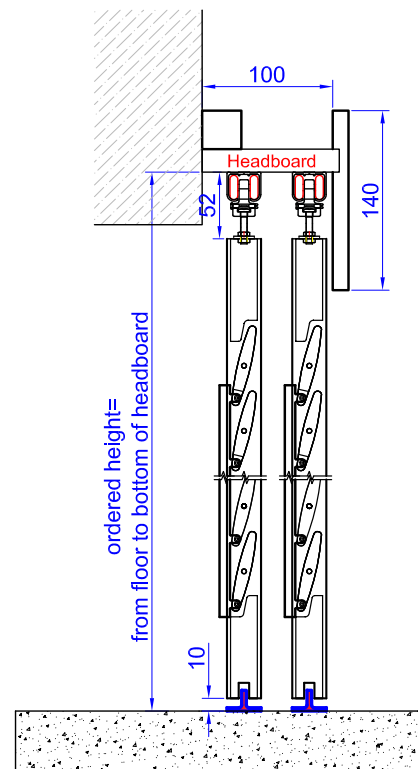


Blade: 89mm Blade  
Tilt Rod: Clearview Rotation  
Bottom Track: No Track, Guide Only

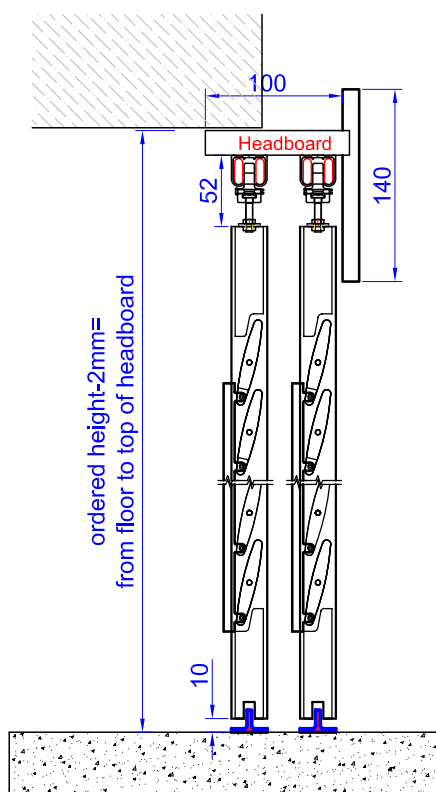
# SLIDING BLADES CLOSED, ALL MOUNTS AND BLADE SIZES SPECIFICATION DRAWINGS



Mount: Reveal  
Bottom Track: No Track, Guide Only



Mount: Face  
Bottom Track: No Track, Guide Only



Mount: Semi-Reveal  
Bottom Track: No Track, Guide Only



## EXTRAS

### SECURITY BOLT:

ONLY AVAILABLE IN HINGED IN FRAME AND HINGED NO FRAME OPTIONS



#### HOW TO ORDER:

**Extras**

Extras: Security Bolt

Quantity: 2

Panel:

1 - Top	1 - Bottom
2 - Top	2 - Bottom
3 - Bottom	
3 - Top	
4 - Bottom	

Assign Remove

Save Cancel

✗ The Security Bolt is stainless steel and is placed at the top or bottom of the selected panel(s) stile on the opposite side of the hinges.

### STANDARD TIMBERS:

**Extras**

Extras: - select here -

Quantity:

Length:

Save

✓ - select here -

- 19x19 Timber
- 26x33 Timber
- 26x40 Timber
- 26x65 Timber
- 33x20 Timber
- 33x33 Timber

### CUSTOM TIMBERS:

**Extras**

Extras: Custom Timber-Up to 52x250mm

Length:

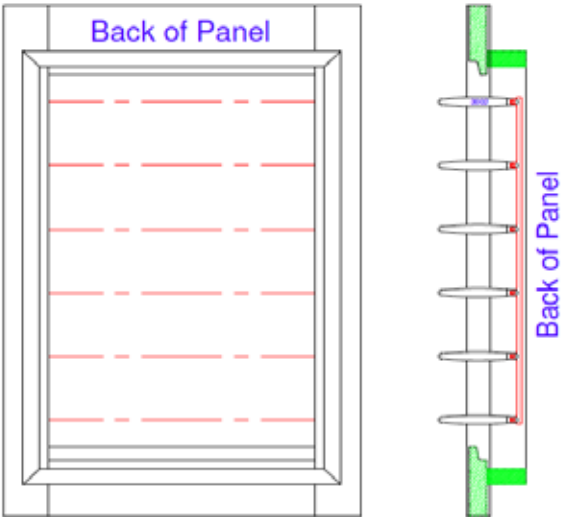
Dimensions:

Save Cancel

The maximum length for timbers is 3000mm. Lengths requested that exceed this will be cut in half automatically.

EXTRAS

FLY SCREEN BEADING:



HOW TO ORDER:

Extras

Extras **Fly-Screen Unit**

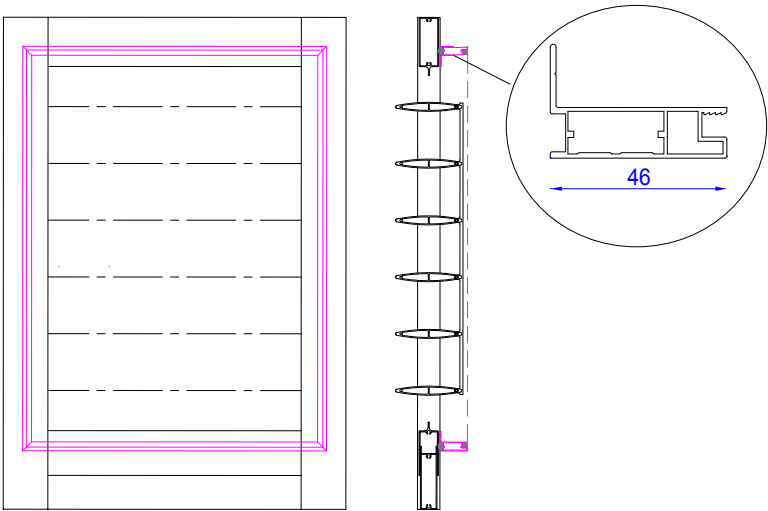
Quantity

Panel

1	
2	
3	
4	
5	

Assign Remove

FLY SCREEN UNIT



HOW TO ORDER:

Extras

Extras **Fly-Screen Unit**

Quantity

Panel

1	
2	
3	
4	
5	

Assign Remove

Save Cancel

# SHAPED SHUTTERS

AVAILABLE IN LIMITED L FRAME AND Z FRAMES. ALSO AVAILABLE FIXED WITH BULLET MAGNETS.

01

Choose your Installation Method and see relevant pages for instructions.

02

Select on the Shaped Shutter option to select the shape required.

Shaped  
Shutter

03

Enter Height 2 if required for the shape selected (see below drawings explaining which shapes require the Height 2 field)

04

Select Stepped (Warranty), or Straight (Non-Warranty) rail.

05

Approve the Non-Warranty item if straight rail type is selected.

Shaped  
Shutter

Height 2: Enter Height 2  
Rail Type: Straight  
Shape Type: Right Rake

Approve\*:



Non-Warranty

06

If you would like to submit a drawing with your order, upload the drawing in the "Upload File" field.

07

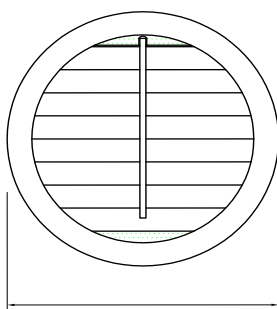
To receive a CAD drawing from the factory (recommended) of the special shape, select yes for "Needs Drawings".

Needs  
Drawing
☐ No ☒ Yes

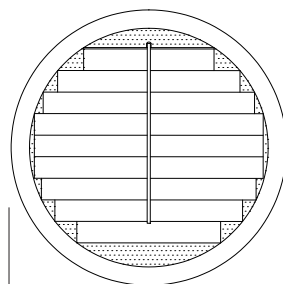
Upload File

Choose File

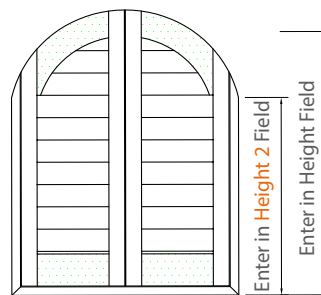
No file chosen



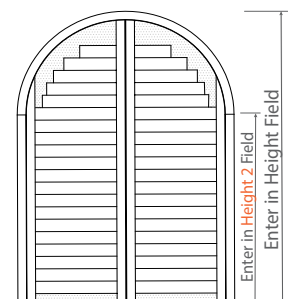
Enter in Width Field  
Circle : Non-Warranty



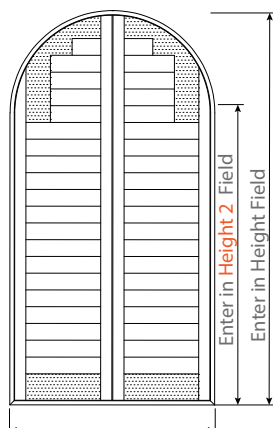
Enter in Width Field  
Circle: Warranty



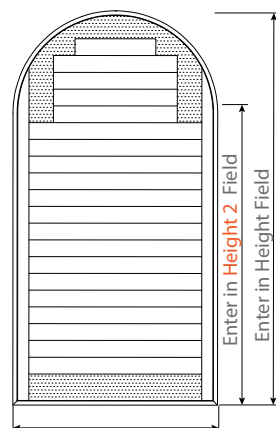
Enter in Width Field  
Arch: Non-Warranty



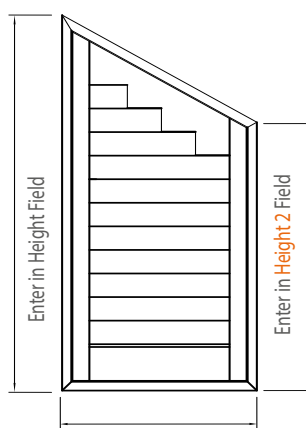
Enter in Width Field  
Arch: Warranty



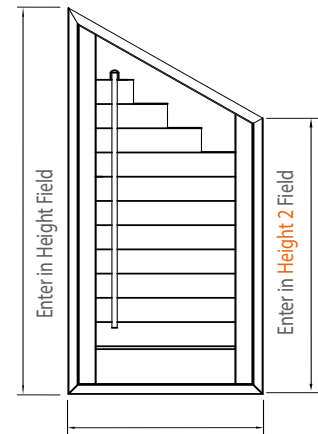
Arch: Warranty



Arch: Warranty

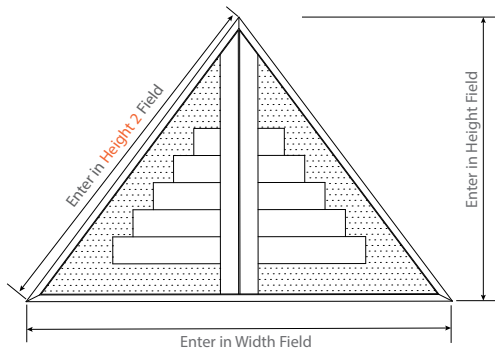


Right Rake: Warranty

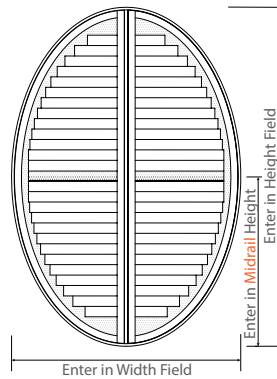


Right Rake: Warranty

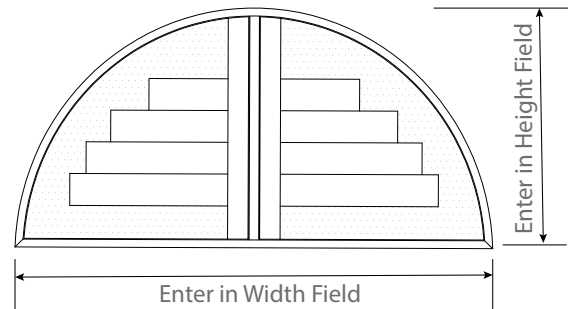
# SHAPED SHUTTERS



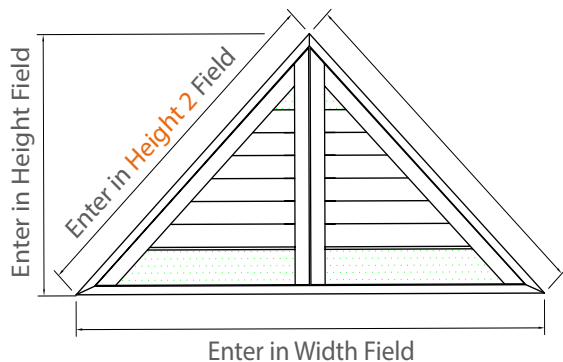
Triangle: Warranty



Oval: Warranty



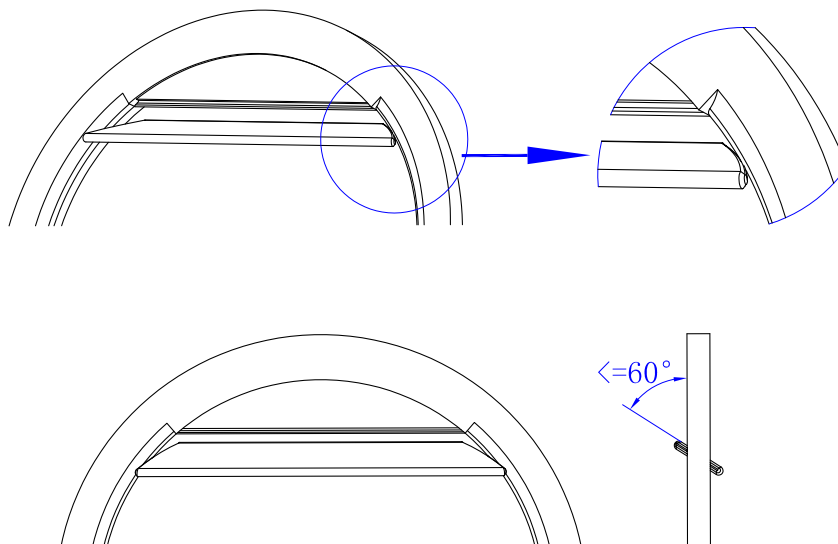
Half Arch: Warranty



Triangle: Non-Warranty

## WARRANTY VS. NON WARRANTY SPECIAL SHAPES

Special shapes with straight rails are limited to a blade operation of 60 degrees. If blades are extended beyond their designed rotation they may snap. Above all the structural integrity of each shutter must be maintained. If rails are not stepped the blade edges and stiles are chamfered to create the straight/round look. This process if done excessively can compromise the structural integrity of the shutter. We recommend and warranty stepped rails for all special shapes as its allows for full blade operation.

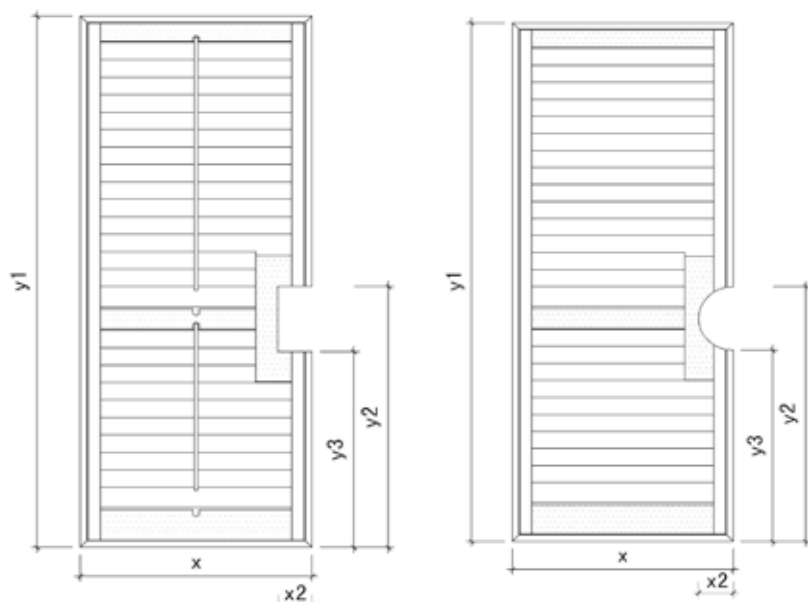


## FRENCH DOOR CUT-OUTS:

SQUARE CUT-OUTS AVAILABLE IN ALL FLAT, BEADED AND INSERT L FRAMES.

ROUND CUT-OUTS AVAILABLE IN ALL FLAT AND BEADED L FRAMES

HOW TO MEASURE:



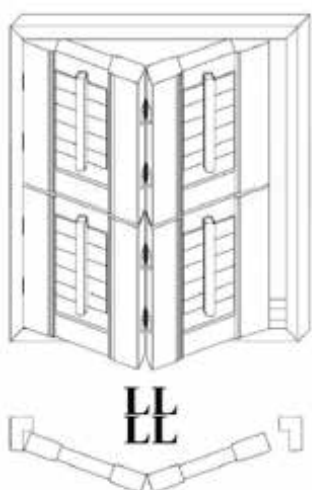
### BACKING BOARD:

Please note that all French Doors come with a backing board as a default. If you do not wish for one to be provided, please state in notes.

HOW TO ORDER:

## TIER ON TIER:

AVAILABLE IN ALL HINGED IN FRAME AND NO FRAME OPTIONS



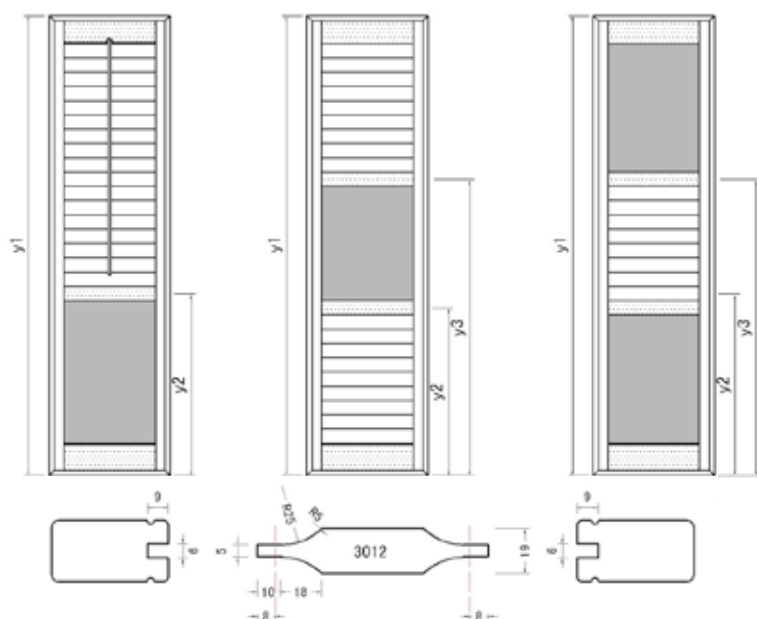
A horizontal T-post is not supplied by default on Tier on Tier applications and must be requested in the notes section of the order form.

HOW TO ORDER:

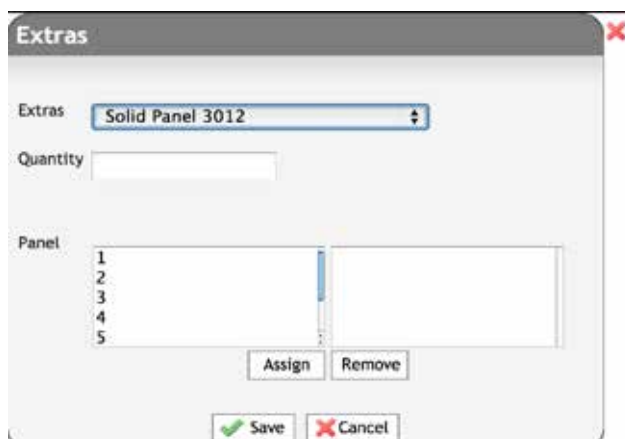
1. Select "Tier on Tier" in the Special Instructions.

2. Enter the height you would like the horizontal T-post to be positioned at in the Notes section. Please give the measurement from the bottom of the opening to the center point of the horizontal T-post position.

## SOLID PANELS: HOW TO MEASURE:



## HOW TO ORDER:



The solid section of the shutter is a medium density fibreboard.