

Ambience External Roller Blind System

Product Information

The Verosol **Ambience External Roller Blind system** is manufactured from the highest quality materials that are complimented with high-performance external fabrics for controlling natural light, heat and solar energy.

Verosol Ambience External Roller Blinds provide seamless integration of indoor and outdoor entertaining areas. One solution for shading and screening. This all in one incredibly versatile product fits standard and oversized applications.

Capable of wide spans, long drops, and having interchangeable components, makes Verosol Ambience External Roller Blinds the perfect customised solution for outdoor comfort shading.

Further Information

To find out more information visit www.verosol.com.au or call Verosol Customer Care on 1800 721 404



Technical Information

| | Ambience External Roller Blind Systems | | | | | |
|--------------------|---|--------|------------------------|--|--------|------------------------|
| Product Name | Ambience Guidewire Systems | | Ambience ZIP Systems | | | |
| Product Code | X300.7 | X300.2 | X300.1 | X301.7 | X301.2 | X301.1 |
| Operation | 240V Motorised Crank Operated Spring Assisted | | | 240V Motorised Crank Operated Spring Assisted | | |
| Dimensions | Without Headbox [min/max] | | With Headbox [min/max] | Without Headbox [min/max] | | With Headbox [min/max] |
| Width | 1000mm to 4600mm | | 1000mm to 3000mm | 1000mm to 5800mm | | 1000mm to 5800mm |
| Drop | 4000mm | | 3000mm | 4000mm | | 3000mm |
| Area | 12m ² | | 12m ² | 14m ² | | 14m ² |
| Base Rail | | | | | | |
| Material | Extruded Aluminium | | | | | |
| Dimensions | Standard Base Rail: 56mm W x 25mm H Optional Base Rail: 72mm W x 31mm H | | | | | |
| Colours | White, Classic Cream, Woodland Grey, Paperbark, Monument, Black, Natural Anodised | | | | | |
| Base rail end caps | | | | | | |
| Material | POM | | | | | |
| Colour | Black | | | | | |
| Guide Wires | | | | | | |
| Material | Stainless steel cable | | | N/A | | |
| Type | Floor Fix Face or Side Fix Floor Fix with option for securing to Masonry | | | | | |
| ZIP Side Channel | N/A | | | Material: Extruded Aluminium | | |
| | | | | Type: Zipper [ZIPSCREEN technology] | | |
| | | | | Colours: White, Classic Cream, Woodland Grey, Paperbark, Monument, Black, Natural Anodised | | |
| Open Brackets | | | | | | |
| Dimensions | 100mm W x 120mm H | | | | | |
| Material | Steel | | | | | |
| Operation | Top or Face Fixing - concealed when installed | | | | | |

Turn over for motorisation and optional extras

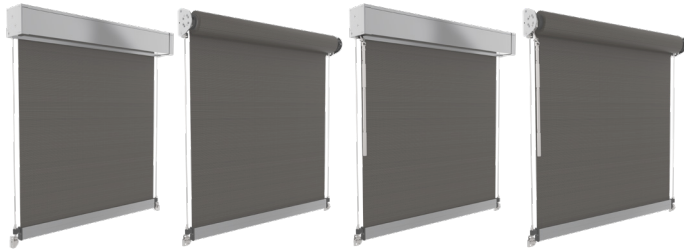
Motorisation

| Ambience External Roller Blind Systems | | |
|--|--|----------------------|
| Product Name | Ambience Guidewire Systems | Ambience ZIP Systems |
| Product Code | X300.7 | X301.7 |
| Motorisation | 240V AC Motorisation | |
| Operation | Hard Wired FT Motor or Wireless Radio Motor Suitable for Smart Home automation Integration enjoy integration with your smart phone, Amazon Alexa, Google Assistant and IFTTT | |

Options

| | | | |
|-----------------|---------------|---|----------------------|
| Head Box System | Materials | Head Box End Plates: Cast Aluminium Head Box Extrusion: Extruded Aluminium | |
| | Dimensions | 125 mm x 125 mm | |
| | Colours | White, Classic Cream, Woodland Grey, Paperbark, Monument, Black, Natural Anodised | |
| | Minimum Width | 1000 mm | |
| | Side Channels | Face Fixing | U-Channel |
| Materials | | Extruded Aluminium | Extruded Aluminium |
| Dimensions | | 31 mm x 43 mm | 31 mm x 43 mm |
| Colours | | White, Classic Cream, Woodland Grey, Paperbark, Monument, Black, Natural Anodised | |
| Maximum Drop | | 4000 mm without headbox | 3000 mm with headbox |

Ambience Guidewire Systems



Motorised | Spring Op with Headbox

Motorised | Spring Op without Headbox

Crank Operated with Head Box

Crank Operated without Head Box

Ambience ZIP Systems



Motorised | Spring Op with Headbox

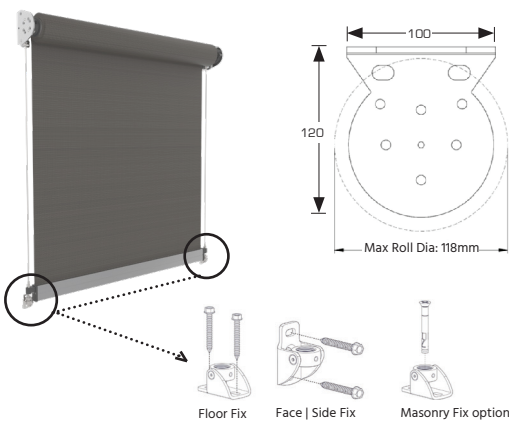
Motorised | Spring Op without Headbox

Crank Operated with Head Box

Crank Operated without Head Box

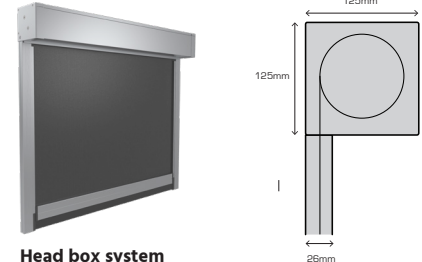
System Diagrams

Guide Wires



[Open Brackets]

Head Box:



Head box system

Manufactured from Aluminium, the External blind head box is available in:

W: 125mm x H: 125mm

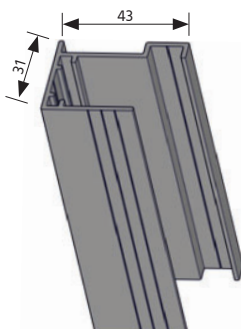
Min width: 1000mm | Max width: 5800mm*

Max Roll Dia: 110mm | Max drop: 3000mm*

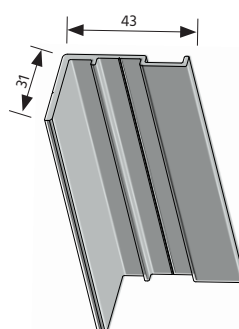
*Colours: White, Classic Cream, Woodland Grey, Paperbark, Monument, Black & Natural Anodised

*restrictions apply

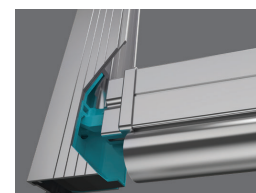
U-Channel [Face Fix]



L-channel [Face Fix]



Ultra-Lock



Ultra-Lock Option

One Action Ultra-Lock & Tension with "Adaptive Locking Technology" Allowing the External blind position to easily reset if simultaneous locking is interrupted by unexpected weather conditions or obstacles