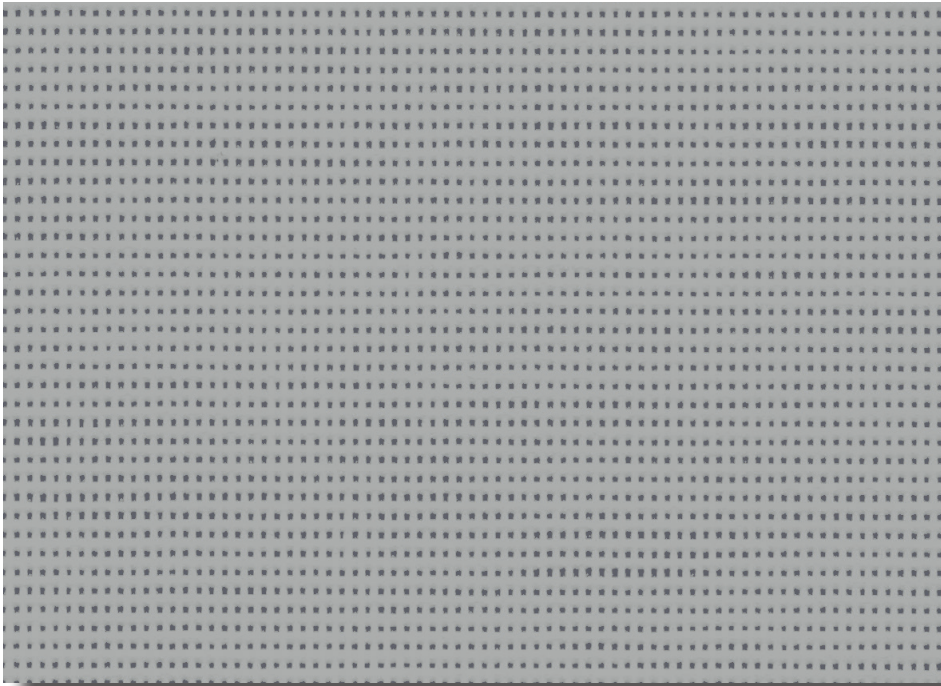


## 297 Soltis 86

Transparent



Flame Retardant



External Roller Blinds

*Unrivalled outward visibility & natural light transmission beneficial to user well-being*

### Features

- Reduces heat transmission by blocking up to 86% of heat in outdoor use
- Reduces glare and provides UV protection
- Provides excellent transparency & provides outward visual contact to enjoy your view when blind is lowered
- Offers optimised natural light contribution, promoting natural light intake reducing the use of artificial light
- Co-ordinated colours available in Soltis 92 allowing visual comfort needs according to facade's orientation

### Care Instructions


Keep the fabric clean by brushing regularly both on the top & underside with a soft brush. Rinse with clean water or wipe with a wet sponge. Allow the fabric to dry completely before it is rolled up. Do not use powered, high pressure washes or steam to the clean fabric. Do not apply soaps, abrasive powders, detergents, cleaning fluids or insecticides.

For more information visit [verosol.com.au](https://verosol.com.au) or call 1800 721 404



# 297 Soltis 86

## Transparent

Fabric Density	Transparent					
Composition	38% Polyester / 62% Vinyl				Tensile Strength [EN ISO 1421]	Warp: 230 daN / 50mm
Weight	380gsm ± 5%					Weft: 160 daN / 50mm
Thickness	0.45mm ± 5%				Tear Strength [DIN 53.363]	Warp: 45 daN
Width	2670mm					Weft: 20 daN
Construction	PVC coated polyester - Preconstraint® Technology					
Flame Retardancy tested to [AS/NZS 1530.3-1999]	Ignitability Index	15 Range [0-20]		Complies with BCA General requirements		
	Spread of flame Index	0 Range [0-20]				
	Heat evolved Index	0 Range [0-20]				
	Smoke developed Index	6 Range [0-20]				
[AS/NZS 3837-1998]	Classification Group 1					
[International]	M1/NFP 92-507   M1/UNE23.727-90   BS 5867   BS 5867   B1/DIN 4102.1   Method 1/NFPA 701   Class A/ASTM E84					
Certification	Greenguard Gold	PVC Best Environmental Practice		ISO 9001		
Suitable Products	External Roller Blinds					

Fabric colour code	2044	2046 alu	2046 col	2135	2043	2048	2171	2045	2167	2068^ alu	2068^ col	2047	51176
Solar transmittance	29%	22%	22%	24%	15%	19%	22%	16%	17%	17%	17%	17%	14%
Solar reflectance outside	59%	40%	55%	39%	11%	39%	36%	29%	14%	31%	7%	7%	5%
Solar absorbance	12%	38%	23%	37%	74%	42%	42%	55%	69%	52%	76%	76%	81%
Luminous transmittance [VLT]	28%	21%	21%	22%	15%	19%	20%	16%	17%	17%	17%	17%	14%
Openness factor	14%	14%	14%	14%	14%	14%	14%	14%	14%	14%	14%	14%	14%

[EN 13363-2\*]

G-Value [gtot] Glazing Type-D

G-Value [External Solar Factor gtot]	0.11	0.10	0.09	0.09	0.07	0.09	0.08	0.08	0.07	0.08	0.09	0.07	0.07
G-Value [Indoor Solar Factor gtot]	0.24	0.16	0.20	0.21	0.28	0.20	0.21	0.23	0.26	0.23	0.28	0.28	0.29

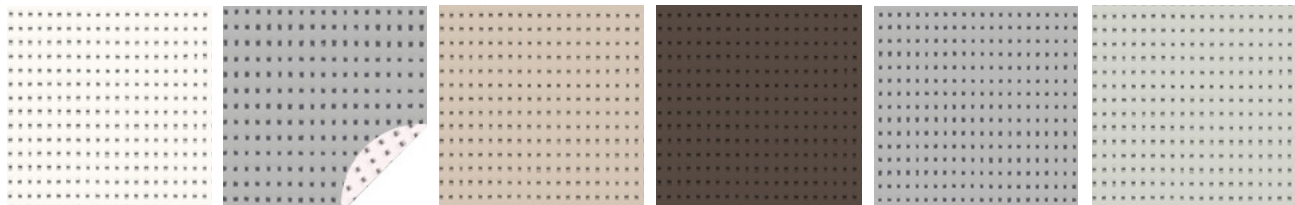
EN 13363-2\*

Takes into account the spectral values of glazing transmission and reflection + blind complex for calculating the solar factor gtot.

Type "D" glazing: insulating double glazing with low emissivity on surface 2 (4 + 16 + 4; Argon filling) g = 0.32 - U = 1.1

^ 2068 only available  
in 1770mm width

### Colour Range



2044 White

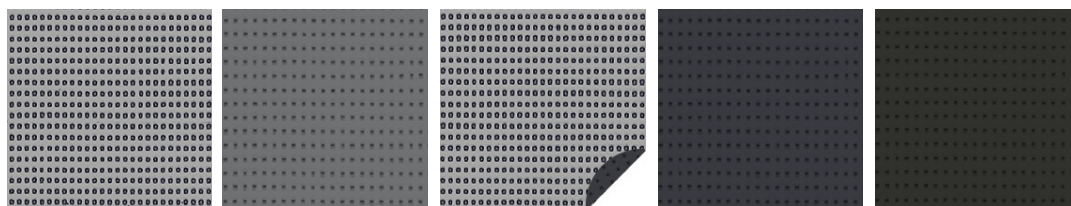
2046 Alu / Oat

2135 Sandy Beige

2043 Bronze

2048 Alu / Alu

2171 Boulder



2045 Beaten Metal

2167 Concrete

2068 Alu / Anthracite^

2047 Anthracite

51176 Deep Black

^ 2068 only available in 1770mm width