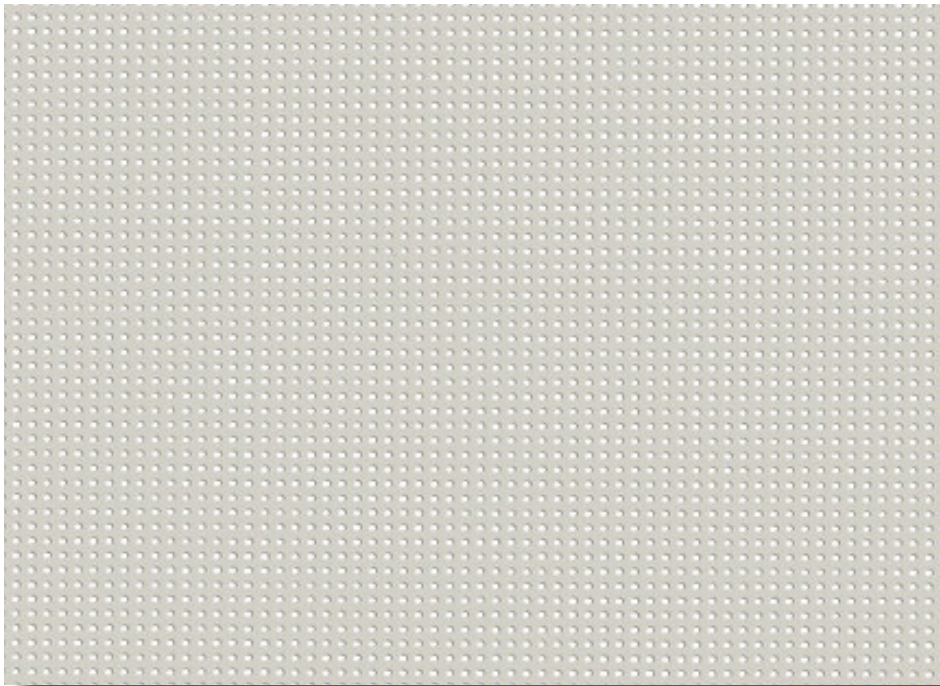


298 Soltis 88

Semi Transparent



Flame Retardant



External Roller Blinds

A perfect balance between design, transparency and thermal comfort

Features

- Reduces heat transmission by blocking up to 88% of heat in outdoor use
- Reduces glare and provides UV protection
- Provides excellent outward visibility
- Offers the perfect balance of natural light and retention of view, while reducing solar heat gain
- Soltis 88 provides visual comfort suitable for both indoor and outdoor use

Care Instructions

Keep the fabric clean by brushing regularly both on the top & underside with a soft brush. Rinse with clean water or wipe with a wet sponge. Allow the fabric to dry completely before it is rolled up. Do not use powered, high pressure washes or steam to the clean fabric. Do not apply soaps, abrasive powders, detergents, cleaning fluids or insecticides.

For more information visit verosol.com.au or call **1800 721 404**



298 Soltis 88

Semi Transparent

Fabric Density	Semi Transparent				
Composition	29% Polyester / 71% Vinyl			Tensile Strength	Warp: 140 daN / 50mm
Weight	360gsm ± 10%			[EN ISO 1421]	Weft: 145 daN / 50mm
Thickness	0.45mm ± 10%			Tear Strength	Warp: 14 daN
Width	2670mm			[DIN 53.363]	Weft: 14 daN
Construction	PVC coated polyester - Precontraint® Technology				
Flame Retardancy tested to [AS/NZS 1530.3-1999]	Ignitability Index	17 Range [0-20]	Complies with BCA General requirements		
	Spread of flame Index	0 Range [0-20]			
	Heat evolved Index	1 Range [0-20]			
	Smoke developed Index	5 Range [0-20]			
[AS/NZS 3837-1998]	Classification Group 1				
[International]	M1/NFP 92-507 M1/UNE23.727-90 BS 5867 BS 5867 B1/DIN 4102.1 Method 1 and 2 /NFPA 701 Class A/ASTM E84				
Certification	Greenguard Gold	PVC Best Environmental Practice	ISO 9001	ISO 14001	ISO 50001
Suitable Products	External Roller Blinds				

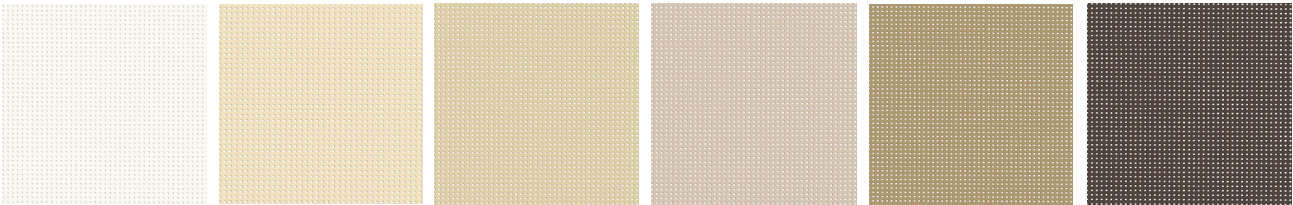
Fabric colour code	2044	2175	50265	2135	2012	2043	2048	2171	2167	2047	2053
Solar transmittance	24%	24%	15%	14%	12%	9%	13%	13%	9%	9%	8%
Solar reflectance outside	65%	62%	44%	42%	29%	12%	44%	38%	16%	8%	6%
Solar absorptance	11%	14%	41%	44%	59%	79%	43%	49%	75%	83%	86%
Luminous transmittance [VLT]	22%	21%	12%	11%	10%	8%	12%	11%	9%	9%	8%
Openness factor	8%	8%	8%	8%	8%	8%	8%	8%	8%	8%	8%

[EN52022-3*]
G-Value [gtot] Glazing Type-D

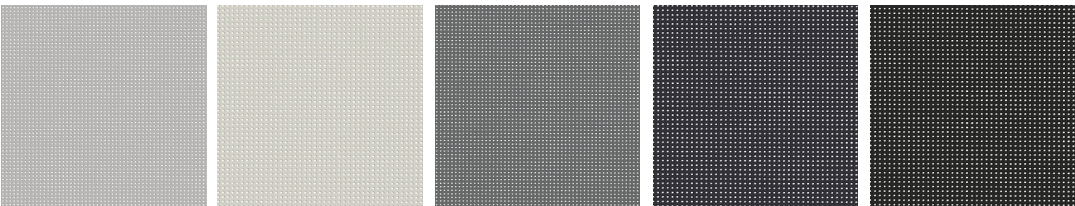
G-Value [External Solar Factor gtot]	0.13	0.12	0.08	0.08	0.07	0.07	0.08	0.08	0.07	0.07	0.07
G-Value [Indoor Solar Factor gtot]	0.12	0.14	0.20	0.20	0.23	0.28	0.19	0.20	0.26	0.28	0.29

EN 52022-3*
Takes into account the transmission and reflection spectral values of the glazing/blind combination to calculate the gtot solar factor.
D-type glazing: insulating double glazing with 2-side low emissivity (4 + 16 + 4; Argon filled) g = 0.32 - U = 1.1.

Colour Range



2044 White 2175 Champagne 50265 Hemp 2135 Sandy Beige 2012 Pepper 2043 Bronze



2048 Alu / Alu 2171 Boulder 2167 Concrete 2047 Anthracite 2053 Black