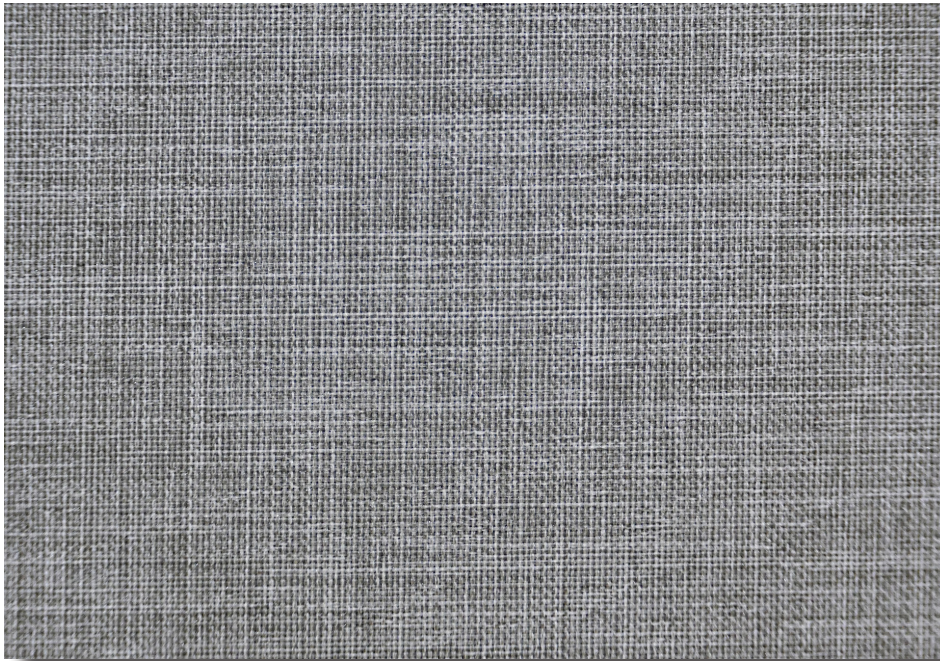


## 259 Echoes

Blockout



Flame Retardant



Roller Blinds



Roman Blinds



Panel Glides

*Dual-faced textured bonded blockout fabric*

### Features

- Environmentally conscious fabric, pvc free, lead free, voc free, suitable for both residential & commercial applications
- Patterned bonded fabric with a soft touch & uniform look on both sides of the fabric
- Designed for maximum room darkening and total privacy
- Suitable for Roller Blinds, Roman Blinds and Panel Glides

### Care Instructions

For regular maintenance, use a soft feather duster or vacuum-clean with a soft brush in a low setting. Always exercise caution when spot cleaning. Use a clean lint-free cloth or sponge & dip it into warm water. Dry gently with a clean towel. Always make sure to test any cleaning product on a small, discreet section of the fabric. Chemicals will permanently damage your fabric.

For more information visit [verosol.com.au](https://verosol.com.au) or call **1800 721 404**



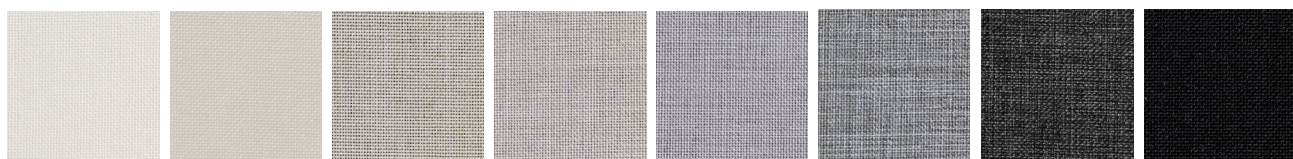
Green Building  
Council Australia  
Member 2025-2026

# 259 Echoes

## Blockout

Fabric Density	Blockout	Pattern	Bonded Blockout Fabric
Composition	100% Polyester	PVC Free   Lead Free   VOC Free	
	Tasmanian Snow & Desert Dune	All other Colours	
Weight	370gsm ± 20gsm	320gsm ± 10gsm	
Thickness	0.65mm ± 5%	0.60mm ± 5%	
Width	3000mm	3000mm	
Colour Fastness	6 Blue Scale [AS2001.4.21-2006]		
Flame Retardancy [AS/NZS 1530.3-1999]	Ignitability Index	13 Range [0-20]	
	Spread of flame Index	9 Range [0-10]	
	Heat evolved Index	5 Range [0-10]	
	Smoke developed Index	7 Range [0-10]	
	Complies with Building Code of Australia requirements for Class 2 to 9(a) Buildings		
Suitable Products	Roller Blinds	Roman Blinds	Panel Glides

### Colour Range



1000 Tasmanian Snow

1500 Desert Dune

3000 Sunburnt Sands

4000 Wattle Seed

5000 Koala Grey

6000 Bondi Stone

8000 Storm Boy

9000 Constellation