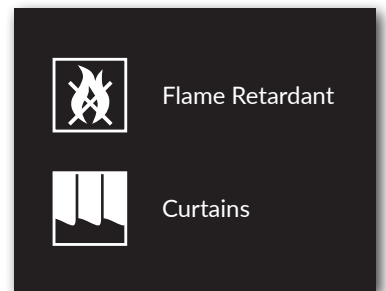
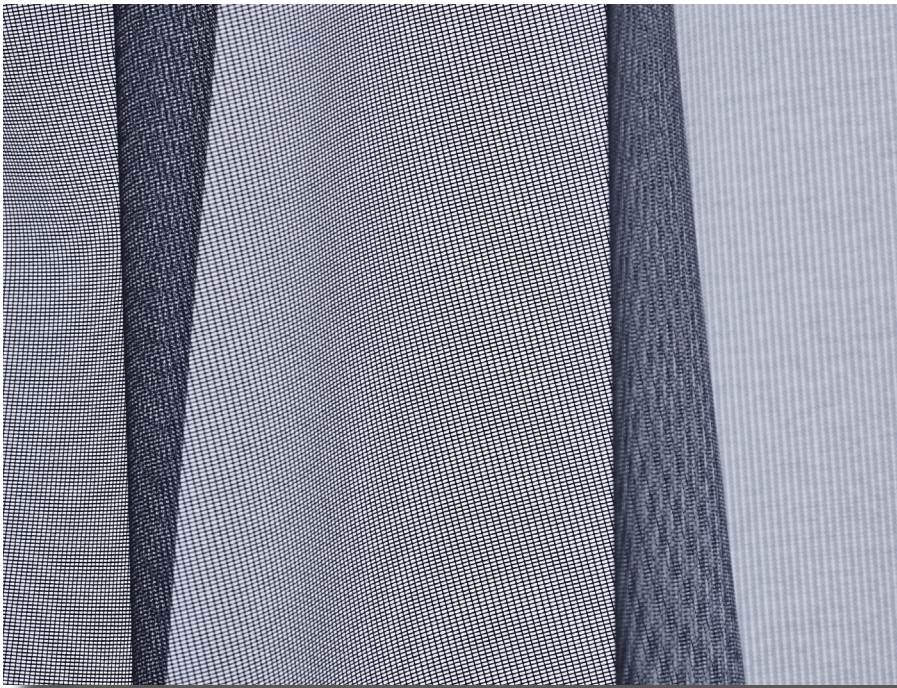


885 Transparent Reflect

Metallised Curtain Fabric

SilverScreen Living






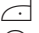

Designer: Louise Sigvardt

Where Exceptional Transparency Meets Elevated Performance

Features

- Part of the Verosol SilverScreen Living Collection - Drapery fabrics developed to the highest quality standards.
- Transparent Reflect integrates a front layer woven from Polyester with an ultra-thin layer of aluminium on its back side. The textile comes in seven neutral yarn-dyed shades which echo solid colours, as if they have been held up to the light and with its metallised layer, dynamically give the curtain a softly shimmering surface.
- Woven from 100% Polyester FR, Transparent Reflect ensures soft drapability and easy care.
- Transparent Reflect is inherently flame retardant making it ideal for both residential and commercial applications
- Transparent Reflect was designed by acclaimed Copenhagen based designer Louise Sigvardt.

Cleaning and care

-  Do not wash
-  Do not bleach
-  Do not tumble dry
-  Iron at low temperature (max. 110°C)
-  Professional dry cleaning, mild process

For more information visit verosol.com.au or call **1800 721 404**



885 Transparent Reflect

Metallised Curtain Fabric

| | | | | |
|--|---|------------------------------|--------------------------------------|---------------------------------------|
| Fabric Transparency | Transparent | Weighted Hem - No | | |
| Composition | 100% Polyester FR | | | |
| Weight | 150g/lin mtr | | | |
| Width | 2800mm | Continuous | Nominal roll size | approx: 30-35 lineal metres (nominal) |
| Pattern | Solid | | | |
| Yarn type | Filament | | | |
| Binding | Plain | | | |
| Colour Fastness | 5-7 (interior) [ISO 105-B02] 7 (exterior) | | | |
| Possible Shrinkage | (warp/weft) Approx: 1% | | | |
| Flame Retardancy [AS/NZS 1530.3-1999] | Ignitability Index | 0 Range [0-20] | | |
| | Spread of flame Index | 0 Range [0-10] | | |
| | Heat evolved Index | 0 Range [0-10] | | |
| | Smoke developed Index | 0-1 Range [0-10] | | |
| [International] | BS 5867 Part 2 Type B | DIN 4102 B1 NF P 92 507 M1 | EN 13 773 class 1 UNI 9177 Class 1 | NFPA 701 IMO FTP Code 2010:Part 7 |
| Certification | Greenguard Gold | HPD 2.3 | REACH | |
| Designer | Louise Sigvardt | | | |
| Manufactured in | Netherlands | | | |
| Cleaning | ☒ ☒ ☒ ☒ ☒ | | | |
| Suitable Products | Curtains | | | |

Solar Optical Properties (EN 14501:2021)

| | |
|---------------------------------|--------|
| Solar transmittance | 50% |
| Solar reflectance outside | 30% |
| Solar absorptance | 20% |
| Openness factor | 46% |
| Visual light transmission [VLT] | 48-50% |

Classification for Visual comfort (EN 14501:2021)

| |
|---|
| Glare control class 0 |
| Visual contact with the outside Class 4 |

Thermal performance (EN 14501:2021) Reference Glazing G

| | |
|----------------------------------|--------|
| G-tot value (SHGC) | 26% |
| U-tot value (W/m ² K) | 0.90 |
| Total light transmission | 36-38% |

Colour Range

